

1966

Golden Gate College School of Law Bulletin - 1966-1967

Follow this and additional works at: <http://digitalcommons.law.ggu.edu/bulletins>




Part of the [Curriculum and Instruction Commons](#)

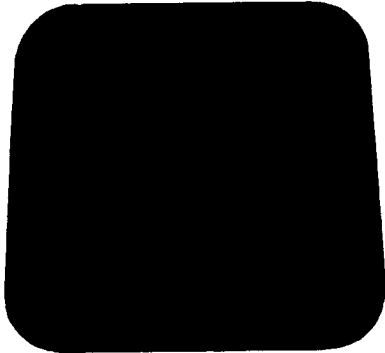
Recommended Citation

"Golden Gate College School of Law Bulletin - 1966-1967" (1966). *Law School Bulletins & Prospectus*. Paper 25.
<http://digitalcommons.law.ggu.edu/bulletins/25>

This Newsletter or Magazine is brought to you for free and open access by the About GGU School of Law at GGU Law Digital Commons. It has been accepted for inclusion in Law School Bulletins & Prospectus by an authorized administrator of GGU Law Digital Commons. For more information, please contact jfischer@ggu.edu.



GOLDEN GATE COLLEGE BULLETIN
VOL. IV MARCH 1966 NO. 7



SCHOOL OF LAW
1966-1967



GOLDEN GATE COLLEGE

SCHOOL OF LAW

**APPROVED BY THE
AMERICAN BAR ASSOCIATION**

AND

**ACCREDITED BY THE
COMMITTEE OF BAR EXAMINERS,
STATE BAR OF CALIFORNIA**

1966-1967

SIXTY-SIXTH YEAR

5 3 6 MISSION STREET

SAN FRANCISCO, CALIFORNIA

GOLDEN GATE COLLEGE

This Bulletin is one of a series which describes the undergraduate programs in Accounting, Business Administration, Economics, Insurance, Political Science, Traffic and Transportation, and General Education; the graduate programs in Business and Public Administration; and the program of the School of Law. These yearly bulletins are available free of charge to persons desiring information about Golden Gate College.

Copies of the bulletin for the School of Law may be obtained from the Dean of the School. All correspondence, inquiries, requests for information (including class schedules), application for admission and transcripts or other documents concerning the School of Law should be addressed as follows:

Dean, School of Law
Golden Gate College
536 Mission Street
San Francisco, California 94105

Requests for copies of other bulletins should be addressed as follows:

Director of Admissions
Golden Gate College
220 Golden Gate Avenue
San Francisco, California 94102

All telephone inquiries should be made to 775-5774 (Area Code 415). (On weekends and holidays and after 5 p.m. on weekdays, the telephone number for the School of Law is 775-5778.)

The College reserves the right to change regulations, curricula, tuition and fees, or any other aspect of its programs described in this bulletin.

GOLDEN GATE COLLEGE BULLETIN
Vol. VI March 1966

No. 7

Published by Golden Gate College, 220 Golden Gate Avenue, San Francisco, California 94102, in January, February, March, April, May, June, July, August, October, and December. Second class postage paid at San Francisco, California.

CONTENTS

CALENDAR, 1966-1967	4
TRUSTEES AND ADMINISTRATION	5
SCHOOL OF LAW FACULTY	8
GENERAL INFORMATION	10
ADMISSION REQUIREMENTS AND PROCEDURES	14
ACADEMIC REQUIREMENTS AND REGULATIONS	17
TUITION AND FEES	20
CURRICULUM	23
COURSES OF INSTRUCTION	26

CALENDAR, 1966-1967

SUMMER SESSION 1966

June 13, 1966 through August 19, 1966

NOTE: The following schedule applies to all except *fourth year* courses. A special schedule will be issued for fourth-year courses.

FALL SEMESTER

August 29-September 1, 1966	Registration for beginning students
September 6-16, 1966	Orientation, beginning students
September 12-15, 1966	Registration for all other students
September 19, 1966	Class instruction begins
November 23-27, 1966	Thanksgiving Recess
December 24, 1966- January 3, 1967	Christmas Recess
January 4, 1967	Classes resume
January 20, 1967	Last class sessions
January 26-February 3, 1967	Fall Semester examinations

SPRING SEMESTER

January 17-19, 1967	Registration for beginning students
January 23-February 3, 1967	Orientation, beginning students
February 1-3, 1967	Registration for all other students
February 6, 1967	Class instruction begins
May 26, 1967	Last class sessions
June 1-9, 1967	Final examinations

SUMMER SESSION 1967

June 12, 1967 through August 18, 1967

HOLIDAYS

The School of Law and Law Library will be closed on the following holidays:

INDEPENDENCE DAY—July 4, 1966

LABOR DAY—September 5, 1966

THANKSGIVING—November 24 & 25, 1966

CHRISTMAS—December 24-26, 1966

NEW YEAR'S—December 31, 1966, January 1 & 2, 1967

WASHINGTON'S BIRTHDAY—February 22, 1967

MEMORIAL DAY—May 30, 1967

TRUSTEES AND ADMINISTRATION

OFFICERS OF THE BOARD OF TRUSTEES

CHAIRMAN

HARRY R. LANGE

Vice President, Marketing, Cutter Laboratories

VICE CHAIRMEN

FRED DREXLER

Senior Vice President, Industrial Indemnity Company

LLOYD D. LUCKMANN

Coordinator of Instruction, City College of San Francisco

STANLEY E. McCAFFREY

President, San Francisco Bay Area Council, Inc.

SECRETARY

PAUL S. JORDAN

Partner, Lamson, Jordan, Walsh & Lawrence, Attorneys at Law

MEMBERS

GEORGE CHRISTOPHER

Chairman of the Board, Commonwealth National Bank of San Francisco

MYRON M. CHRISTY

President, Western Pacific Railroad Company

NILS O. EKLUND, JR.

Vice President, Kaiser Industries Corporation

CHARLES L. GOULD

Publisher, San Francisco Examiner and News Call-Bulletin

JAMES E. HAMMOND

Partner, Lybrand, Ross Bros. & Montgomery, Certified Public Accountants
(retired)

WILLIAM L. INGRAHAM

Vice President, Standard Oil Company of California

MILTON C. KENNEDY

Assistant Manager, Pacific Department, Hartford Accident and Indemnity
Company (retired)

RUDOLPH E. LINDQUIST

President, Bearing Specialty Company

WILLIAM T. MCGILLIVRAY

Vice President & Controller, California Packing Corporation

JOHN R. McKEE
Director, California Casualty Indemnity Exchange

ARCH MONSON, JR.
President, Monson Electric Company

HERMAN A. NELSON
Vice President - General Auditor, Southern Pacific Company

JOHN G. NEUKOM
Director, McKinsey & Company, Inc.

RUSSELL T. SHARPE (ex officio)
President, Golden Gate College

ROY SORENSON
General Secretary (retired), San Francisco Y.M.C.A.

PAUL STEWARD
General Secretary, San Francisco Y.M.C.A.

SAMUEL B. STEWART
Executive Vice President - General Counsel and Chief Executive Officer,
Trust Activities, Bank of America

LIFE MEMBERS

CARL H. ALLEN
Judge of the Superior Court, City and County of San Francisco

A. JOHN BARTKY
Professor of Education, Emeritus, Stanford University

JOHN H. COUPIN
General Agent, Western Pacific Railroad Company (retired)

ROY S. FROTHINGHAM
Partner, Facts Consolidated (retired)

JAMES E. HOLBROOK
Vice President, Pabco Products, Inc. (retired)

A. B. TICHENOR
Vice President, Matson Navigation Company (retired)

CASPAR W. WEINBERGER
Attorney at Law, Heller, Ehrman, White & McAuliffe

EMIL G. WUNNER
Secretary, Diversified Equities Corporation

COLLEGE ADMINISTRATION

RUSSELL T. SHARPE, B.S., Ph.D., President

NAGEL T. MINER, A.B., LL.D., Executive Dean

MICHAEL F. HUGHES, A.B., Vice President for Development

JOHN A. GORFINKEL, A.B., J.D., J.S.D., Dean, School of Law

HOWARD L. MARTIN, Ph.B., Ed.M., M.B.A., C.P.C.U., Dean, School of
Business Administration

HAROLD E. KORF, A.B., B.L.S., Librarian

ALICE PARKER, A.B., M.A., Registrar

ARVILLA SELIGMAN, A.B., Director of Placement and Dean of Women

HARRY G. HANSEN, Bursar

ELEANOR McCUNE, Chief, Student Accounts

RICHARD K. KELLY, B.S., M.A., Director of Public Relations

ROBERT E. RUTHERFORD, B.S., M.A., Assistant to the President and Chair-
man, Committee on Financial Aid



Harry Wade

SCHOOL OF LAW FACULTY

JOHN A. GORFINKEL, Dean, School of Law and Professor of Law
A.B., 1926, J.D., 1929, J.S.D., 1931, University of California; member of
the California Bar.

PAUL S. JORDAN, Dean Emeritus, School of Law and Professorial Lecturer
in Law
A.B., 1925, J. D., 1927, University of California; member of the California
Bar; practicing attorney in San Francisco.

JAMES B. SMITH, Professor of Law
LL.B., 1946, University of San Francisco; member of the California Bar.

MICHAEL M. GOLDEN, Associate Professor of Law
A.B., 1955, Pomona College; LL.B., 1960, Stanford University; member of
the California Bar.

LAWRENCE H. JONES, Associate Professor of Law
A.B., 1958, Washington State University; LL.B., 1961, Stanford University;
member of the California Bar.

KENNETH P. KLAIMAN, Assistant Professor of Law
B.A., 1961, Tulane University; J.D., 1964, LL.M., 1965, Northwestern Uni-
versity; member of the Illinois Bar.

JACK L. BADER, Lecturer in Law
A.B., 1956, University of Hawaii; J.D., 1960, University of Chicago; mem-
ber of the California and New York Bar; practicing attorney in San Fran-
cisco.

RICHARD D. BRIDGMAN, Lecturer in Law
A.B., 1951, University of California; LL.B., 1958, Golden Gate College;
member of the California Bar; practicing attorney in Oakland.

WILKIE COURTER, Professorial Lecturer in Law, Emeritus
B.S., 1932, LL.B., 1936, University of San Francisco; member of the Califor-
nia Bar; practicing attorney in San Francisco.

SEYMOUR FARBER, Lecturer in Law
A.B., 1951, New York University; LL.B., 1954, Harvard University; member
of the California, New York and District of Columbia Bar; practicing attor-
ney in San Francisco.

THOMAS L. FIKE, Lecturer in Law
A.B., 1955, University of California; LL.B., 1964, Golden Gate College;
member of the California Bar.

HON. ALVIN H. GOLDSTEIN, JR., Lecturer in Law
A.B., 1949, Colgate University; LL.B., 1952, Harvard University; Judge
of the Municipal Court, Marin County.

- WILLIS D. HANNAWALT, Professorial Lecturer in Law
A.B., 1949, J.D., 1954, University of Chicago; member of the California Bar; practicing attorney in San Francisco; on leave, 1966-67.
- ROBERT M. HARLICK, Lecturer in Law
A.B., 1952, LL.B., 1955, University of California; member of California Bar; practicing attorney in San Francisco.
- ARLENE HEATH, Lecturer in Law
A.B., 1955, University of California, Los Angeles; LL.B., 1959, University of Southern California; member of the California Bar; practicing attorney in San Francisco.
- DONALD J. LAWRENCE, Lecturer in Law
B.S., 1950, LL.B., 1952, University of San Francisco; member of the California Bar; practicing attorney in San Francisco.
- HON. GERALD S. LEVIN, Professorial Lecturer in Law, Emeritus
A.B., 1927, LL.B., 1930, University of California; Judge of the Superior Court of the State of California.
- PETER K. MAIER, Lecturer in Law
A.B., 1949, Claremont Men's College; LL.B., 1952, University of California; LL.M., 1953, New York University; member of the California Bar; practicing attorney in San Francisco.
- KURT W. MELCHIOR, Lecturer in Law
Ph.B., 1943, M.A., 1949, University of Chicago; LL.B., 1951, Yale University; member of the California, District of Columbia and Illinois Bar; practicing attorney in San Francisco.
- ALLAN R. MOLTZEN, Professorial Lecturer in Law
A.B., 1939, University of California; LL.B., 1942, Harvard University; member of the California Bar; practicing attorney in San Francisco.
- VARNUM PAUL, Professorial Lecturer in Law
A.B., 1930, LL.B., 1933, University of California; member of the California Bar; practicing attorney in San Francisco.
- HERBERT POTHIER, Professorial Lecturer in Law, Emeritus
Ecole Superieure de Commerce, Switzerland; LL.B., 1935, University of California, Hastings College of the Law; member of the California Bar; practicing attorney in San Francisco.
- WARREN H. SALTZMAN, Lecturer in Law
A.B., 1949, University of California; LL.B., 1952, Yale University; member of the California Bar; practicing attorney in San Francisco.
- CATHERINE SHERBURNE, Professorial Lecturer in Law
LL.B., 1956, Golden Gate College; member of the California Bar; practicing attorney in San Francisco.

GENERAL INFORMATION

Golden Gate College is a privately supported, coeducational, non-sectarian, metropolitan institution of higher learning. It offers programs in Accounting, Business Administration, Economics, Law, Public Administration, and General Education. The programs lead to the degrees of Bachelor of Arts, Bachelor of Science, Master of Business Administration, Master of Public Administration, and Bachelor of Laws. The College is accredited by the Western Association of Schools and Colleges.

The School of Law is on the approved list of the American Bar Association and accredited by the Committee of Bar Examiners of the State of California. It was established in 1901 as a branch of the San Francisco Y.M.C.A. and was the first law school in California to offer evening instruction. It was incorporated in 1910 with the right to confer degrees, and became an integral part of Golden Gate College in 1923 when the latter was incorporated as a non-profit collegiate institution.

The College operates at two locations in downtown San Francisco. The Schools of Business and Public Administration and the administrative headquarters of the College are housed in the Central Y.M.C.A. building at 220 Golden Gate Avenue. The School of Law and C.P.A. Examination Preparation Program are located at 536 Mission Street in a building acquired by the College in 1964.

The School of Law and Law Library occupy the first and second floors of this building which is located in close proximity to the business and financial districts of San Francisco, and is readily accessible by public transportation from all parts of the Bay Area.

PROGRAMS OF THE SCHOOL OF LAW

The School of Law offers both full-time and part-time programs leading to the Bachelor of Laws degree.

FULL-TIME PROGRAM: A three-year curriculum is offered in the Day Division. Students are admitted to this Division only at the beginning of the Fall Semester, and are required to attend full-time in both the Fall and Spring semesters. They must carry the full prescribed curriculum of 31 units in the first year, and not less than 26 units in each of the remaining years. Classes are held five days a

week, Monday through Friday, between 8:30 a.m. and 5:30 p.m. Examinations are held during the day, or in the evening between 7:00 p.m. and 10:00 p.m.

PART-TIME PROGRAM: A four-year curriculum is offered in the Evening Division, requiring part-time attendance in both the Fall and Spring semesters and at least two Summer Sessions. Students are admitted to this Division at the beginning of the Fall or Spring semester. Seventy-three of the units required for graduation may be taken in the Fall and Spring semesters. The remaining 11 units must be taken in Summer Sessions or in special seminars offered during the academic year. Classes are held from 6:50 to 9:30 p.m. in the Fall and Spring semesters, and from 6:30 to 9:30 p.m. in the Summer Session. The schedule is arranged so that a student will usually attend classes three nights a week.

A four-year curriculum requiring part-time attendance in the morning is offered for students who have completed one year of law study prior to the 1966-67 academic year. Classes in the Morning Section meet for ten hours a week between 8:30 and 11:45 a.m. This program will be discontinued at the end of the Spring Semester, 1969.

THE LAW SCHOOL LIBRARY

The Law School library contains all materials necessary for study and research in American and English law. It is open every day except on College holidays. The hours are from 8:30 A.M. to 9:45 P.M., Monday through Friday, and from 9:30 A.M. to 5 P.M. on Saturday and Sunday. The facilities of the general College Library are also available.

VETERANS

The College and the Law School are approved for training under Federal and California laws providing therefor. Students desiring information concerning such benefits should consult the College or the local office of the appropriate agency.

BOOKS AND SUPPLIES

Students must obtain all required case books and texts. All books can be purchased through the Law School Bookstore.

STUDENT BAR ASSOCIATION

Professional and social activities in the Law School are arranged by the officers of the Student Bar Association.

ALUMNI ADVISORS

Graduates of the Law School are available in many cities in California to assist and advise persons interested in admission to the School. The name and address of the Alumni Advisor in any area will be furnished on request.

ADMISSION TO THE BAR

Graduation from the School of Law of Golden Gate College will satisfy the *legal* educational requirements for admission to the bar in California and elsewhere in the United States.

In California every law student must register with the State Bar of California within three months after commencing the study of law, and must file formal application to take the bar examination within the time specified in the rules. Copies of the California Rules and all registration forms and applications are available in the Law School office.

Each state has special requirements concerning registration, residence, and *pre-legal* education. A digest of each state's requirements is on file in the Law Library.

COLLEGES AND UNIVERSITIES REPRESENTED IN THE STUDENT BODY

In the Fall Semester 1965, graduates of 108 accredited senior colleges and universities were enrolled in the School of Law of Golden Gate College. The institutions (and number of enrollees if more than one) were as follows:

Alabama, University of (2)	Bowdoin College
Albertus Magnus College	Bradley University
Allegheny College	Brigham Young University
American University	Brooklyn College (2)
Arizona State University	Brown University
Arizona, University of (4)	California State College at Hayward (3)
Augustana College	California State College at Los Angeles
Bard College	California, University of, Berkeley (68)

California, University of, Davis
 California, Univ. of, Los Angeles (10)
 California, Univ. of, Santa Barbara (2)
 Chico State College (4)
 City College of New York (2)
 Colgate University
 Colorado, University of (4)
 Columbia University
 Denver, University of (4)
 Dickinson College
 Emory University
 Fairleigh Dickinson University
 Fisk University
 Florida, University of
 Fordham University
 George Washington University
 Fresno State College
 Golden Gate College (3)
 Hofstra College
 Howard University
 Humboldt State College (2)
 Idaho, University of
 Illinois Institute of Technology
 Illinois, University of (3)
 Johns Hopkins University
 Kansas, University of
 Lake Forest College
 Lehigh University
 Le Moyne College, Syracuse, N. Y.
 Lewis and Clark College
 Louisiana State University
 Mansfield State College
 Massachusetts Institute of Technology
 Miami University
 Michigan State University
 Michigan, University of (2)
 Mills College
 Minnesota, University of (4)
 Missouri, University of
 Montana State College (2)
 Nevada, University of
 New School for Social Research
 North Carolina, University of
 Northrop Institute of Technology
 Northwestern University
 Notre Dame, University of (2)
 Occidental College
 Ohio University
 Oklahoma State University
 Oklahoma, University of
 Oregon State University (2)
 Oregon, University of (2)
 Pacific Lutheran College
 Pacific, University of the (3)
 Pennsylvania State University
 Queens College, New York (2)
 Rice University
 Rose Polytechnic Institute
 Russell Sage College
 Rutgers University (2)
 Sacramento State College (3)
 San Diego State College
 Saint John's University
 Saint Mary's College of California (5)
 San Francisco State College (36)
 San Francisco, University of (23)
 San Jose State College (4)
 Santa Clara, University of (3)
 Seattle University
 South Carolina, University of
 Southern California, University of (2)
 Stanford University (4)
 State University of Iowa
 Suffolk University (2)
 Tehran, University of
 Temple University (2)
 Texas Western College
 Texas, University of
 Toronto, University of
 United States Merchant Marine
 Academy (2)
 United States Military Academy
 United States Naval Academy (2)
 Utah, University of
 Vermont, University of
 Virginia, University of
 Wabash College
 Washington University, St. Louis
 Washington, University of (2)
 Western Illinois University
 Western Washington State College
 Wilberforce University
 Wisconsin, University of (4)



Harry Wade

ADMISSION REQUIREMENTS AND PROCEDURES

ADMISSION REQUIREMENTS

The School of Law acts on all applications for admission through its Committee on Admissions. The Committee considers the applicant's academic record and his score on the Law School Admission Test, and may require a personal interview.

EDUCATION: An applicant for admission as a degree candidate should hold a bachelor's degree from an accredited college at the time of registration. In special circumstances, exceptions may be made by the Committee on Admissions.

An applicant who has previously attended another law school will be admitted only if he withdrew in good academic standing and has an honorable dismissal.

LAW SCHOOL ADMISSION TEST: An applicant for admission as a degree candidate must take the Law School Admission Test and have a copy of the score report sent directly to the School of Law, Golden Gate College, 536 Mission Street, San Francisco, California 94105.

This test is given four times a year: in February, April, July or August, and November. Test centers have been established throughout the United States. At this writing, Spring 1966, the fee for the test is \$12.00. Application to take the test must be on file with the Educational Testing Service at least two weeks prior to the test date. A bulletin of information and an application form may be obtained from the Law School office or by writing to Law School Admission Test, Educational Testing Service, Box 944, Princeton, New Jersey 08540.

ADMISSION WITH ADVANCED STANDING: Credit will be allowed only for courses satisfactorily completed at a law school approved by the American Bar Association.

NON-DEGREE STUDENTS AND AUDITORS: A graduate of a law school approved by the American Bar Association or a member

of the State Bar of California or another state, may take courses as an auditor or for credit as a non-degree student.

A person who satisfies the educational requirements for admission to the Law School and whose previous education and experience has been such as to indicate that he can do the work satisfactorily may, subject to the approval of the Dean and course instructor, take selected courses.

Persons wishing to enroll as non-degree students or as auditors must complete the admissions procedures specified below, including submission of transcripts or other documents supporting eligibility for admission. The regular schedule of tuition and fees applies to auditors and non-degree students.

ADMISSION PROCEDURES

APPLICATION AND SUPPORTING DOCUMENTS: An applicant for admission must

- i) File an application on a form provided by the Law School;
- ii) Have an official transcript sent directly to the Law School by each college or university attended, including any graduate studies;
- iii) If he is a degree candidate, have a copy of his score report on the Law School Admission Test sent directly to the Law School by the Educational Testing Service;
- iv) Pay a \$5.00 non-refundable application fee, unless the applicant has previously been admitted to Golden Gate College.

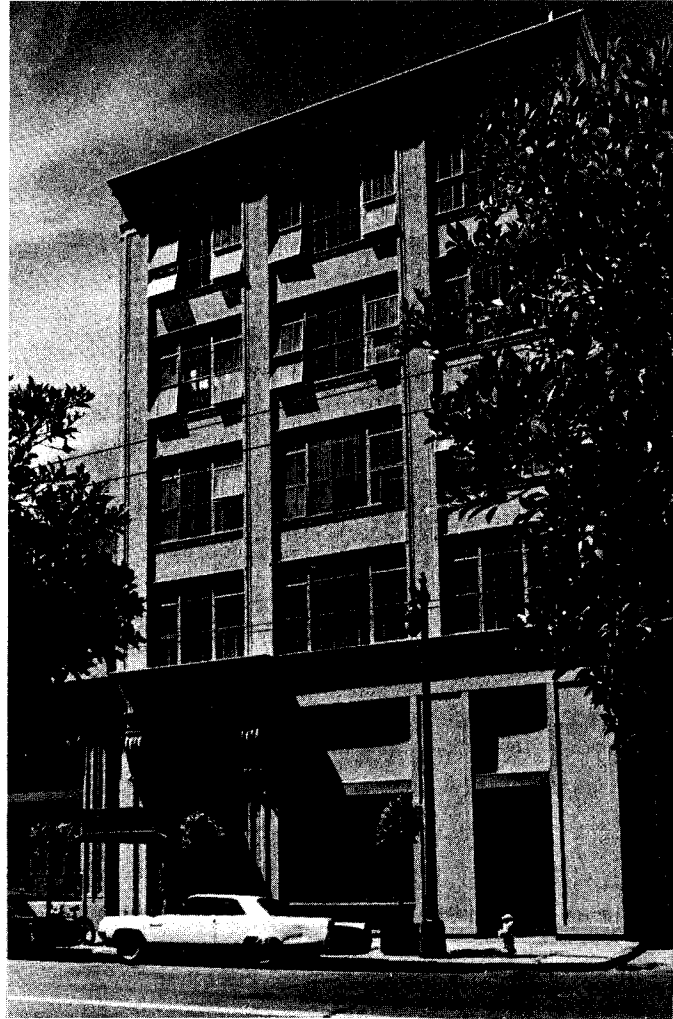
An applicant who has attended another law school must also have an official transcript sent directly by that school and, unless the transcript clearly so indicates, must obtain a certification of honorable dismissal while in good academic standing.

DATES FOR APPLICATION: Application for admission, with all supporting documents, should be on file with the Law School no later than June 1 for admission in the Fall Semester, and December 1 for Spring Semester admission. (Students are admitted to the Evening Division at the time of the Fall and Spring semesters and to the Day Division, only at the Fall Semester.)

No action will be taken until the application and all supporting

documents have been received by the School of Law. If the applicant will not have completed his undergraduate studies by the application date, transcripts of all work completed to date should be furnished as a basis for provisional action by the Committee on Admissions.

Applicants who have not submitted the information necessary for provisional action by the stated date will be considered only if there are vacancies.



Harry Wade

ACADEMIC REQUIREMENTS AND REGULATIONS

ACADEMIC REQUIREMENTS

Qualification for the Bachelor of Laws degree requires the completion of 84 units of study, according to the prescribed curriculum, with a weighted average grade of 70 or better.

GRADES: Grades are recorded in numerical form on a scale ranging from a maximum of 100 to a minimum of 40. A grade below 50 is a failure and no credit is allowed for the course. A failure in a required course must be removed by taking the next succeeding examination in that course and achieving a passing grade. A failure in an elective course may similarly be removed. No course may be repeated.

In year courses, one grade is recorded for the entire course.

Certain courses including most seminars are "for credit only" and no grade other than pass or fail is entered on the student's record.

A weighted grade average of 70 is required for each year's work and for all work completed in order to maintain satisfactory status.

PROBATION: A student whose average for any year or cumulative average is below 70 will be permitted to continue on probation under the following conditions:

A student in the Day Division may be advanced to the second year if his weighted average for first year studies is 69.00 or better;

A student in the Evening Division may be advanced to the second year if his weighted average after completion of 18 units is 67.00 or better; and may be advanced to the third year if his average after completion of 36 units is 69.00 or better;

No student whose weighted average is less than 70 will be permitted to continue after completion of 54 units, or to enroll for courses which, when added to work already completed, would total more than 62 units.

Regardless of his cumulative average, any student who has a weighted average below 69 for any year's work after the first year is subject to dismissal.

EXAMINATIONS: In most courses, the student's final grade is determined by his grades in the course examination or examinations.

A final examination is given in all courses except seminars. In all year courses in the first and second years, a mid-year examination is also given. The instructor determines the respective weights given to and the material to be covered by the two examinations.

Usually, the same examination is given simultaneously to all students taking a particular course in Day and Evening divisions, and such examinations are scheduled between 7:00 p.m. and 10:00 p.m.

All examinations must be taken at the time scheduled. Failure to do so will result in a grade of 40 being recorded for that examination. It may be removed only by showing good cause for not taking the scheduled examination and then passing a re-examination. A fee of \$10.00 is charged for each re-examination.

The policies, rules, and procedures governing conduct of examinations are set forth in mimeograph form. The schedule for mid-year and final examinations is available two weeks before each examination period. Students are responsible for obtaining copies of the rules and schedules from the Law School office, and must be familiar with their contents.

ACADEMIC REGULATIONS

COURSE OF STUDY: Students in the Day Division must take the prescribed curriculum in their first year; and thereafter they must take all required courses each year and a minimum of 12 units each semester. Students in the Evening Division must take the prescribed curriculum in their first two years; and in the third and fourth years they may not take less than eight or more than 10 units each semester.

No student may take more than six units in any Summer Session.

A student enrolled in one division may not take courses in the other division, except seminars and during Summer Sessions.

Transfer from the Evening Division to the Day Division will be permitted only at the end of an academic year. Transfer from the Day to the Evening Division will be permitted at the end of an academic year and, at the discretion of the Dean and Faculty, may be permitted during an academic year.

No student may, without prior approval, register for courses in any other school or college while attending the School of Law, or receive credit for any course taken at any other law school.

ATTENDANCE: Regular attendance is required in all courses. A student may be dismissed at any time if, in the opinion of the Faculty, his attendance at classes is so irregular that there is reason to believe that he is not faithfully and diligently pursuing his studies.

Three consecutive absences in any course will be grounds for dropping the student from that course unless a leave of absence has been granted. Application for a "short-term" leave of absence should be made to the Dean's office in advance of any contemplated absence of more than one week. In cases where the absence of a student is due to an emergency which prevented application for leave in advance, notification and request for leave should be made at the earliest opportunity. A student dropped from more than one course for non-attendance will be dismissed from the Law School.

LONG-TERM LEAVE OF ABSENCE: A student admitted to the Law School is expected to pursue the complete course of study without interruption. If he is unable to complete a semester's or year's work, or is unable, after completion of a semester or a year, to return for the next regular semester, he must, in order to retain his right to return, apply for and obtain a "long-term" leave of absence.

A student who withdraws during, or at the end of, any semester without first obtaining a leave of absence, or fails to return within the time specified in his leave, will be re-admitted only upon application and at the discretion of the faculty.

No leave of absence will be granted for longer than one year.

SUSPENSION OR DISMISSAL: The College reserves the right to suspend or dismiss a student if, at any time, it finds his conduct is inimical to the best interests of the College or to other students attending the College.

PRIZES AND AWARDS: The Bancroft-Whitney Company, Bender-Moss and The Recorder Printing and Publishing Company offer annual prize awards to members of the graduating class for scholastic achievement. The Annotated Reports System, published by the Lawyers Cooperative Publishing Company and Bancroft-Whitney Company, awards selected titles from American Jurisprudence as prizes to students receiving the highest grades in certain courses.

TUITION AND FEES

SCHEDULE OF TUITION AND FEES

Tuition in the School of Law is \$28.00 per semester unit. (If paid in installments, each payment deferred beyond 30 days after the opening of the semester is subject to a service charge of \$1.00.) Fees are as follows:

Application for admission	\$ 5.00
Registration, each semester including summer session.....	1.00
Student Bar Association, each semester, excluding summer session	5.00
Program change initiated by the student after the first week of the semester (including withdrawals), each change	1.00
After the fourth week	2.00
Graduation	20.00
Transcript, each copy after the first	1.00

PAYMENT AND ADJUSTMENT OF TUITION AND FEES

OBLIGATION FOR PAYMENT: Enrollment, when accepted by the College, constitutes the financial contract between the student and the College. Tuition and fees of all students, including those whose tuition payments have been deferred, become an obligation which is payable on the dates due. Failure to make payments of tuition, fees, or other amounts owed the College when they become due, or to arrange for such payments before the due date, is considered sufficient cause, until the debt has been paid or adjusted, to (1) suspend the student, and (2) withhold grades, transcripts, diplomas, scholastic certificates, and degrees.

Auditors and students repeating courses pay the same tuition and fees as other students.

TUITION PAYMENT: Tuition and fees are payable upon enrollment. As a convenience, students may pay tuition in installments as deferred payments. Details of the deferred payment plan will be furnished by the College on request. If a student leaves or is dismissed during the semester, all outstanding obligations become due

and payable on the termination date. Foreign students do not have the privilege of deferred payment plans in their first semester at the College.

ADJUSTMENT OF TUITION: Students are accepted with the understanding that they will remain for the entire semester unless suspended or dismissed. The College makes its commitments on a semester basis, according to the number of enrolled students, and is not relieved of its obligations when students withdraw. Although the tuition adjustment policy is liberal, it is predicated on the principle that the student who does not complete the semester should, in fairness, bear a small share of the loss occasioned by his withdrawal. Tuition adjustments are therefore made not on a straight pro rata basis, but as follows:

1. No adjustment in tuition will be made for late enrollment, absences from class, leaves of absence for a portion of the semester, or when a student has been dismissed or suspended by official action of the College.

2. Students must notify the Registrar, in writing and in advance when possible, of any change in enrollment status not initiated by the College. When such notice is received, tuition will be adjusted as follows:

- a. If the withdrawal occurs during the first week of the semester, no tuition will be charged.

- b. If the withdrawal occurs or the student is dropped after the first week of the semester, a percentage of the semester's tuition for each course will be charged, according to the table below, for each week from the beginning of the semester through the week in which enrollment is terminated.

During Fall and Spring Semesters.....	8% per week
---------------------------------------	-------------

During Summer Session.....	14% per week
----------------------------	--------------

- c. The date of termination will be the date when the College receives written notification of withdrawal (or change in program) or the date on which the student is dropped by the College.

3. No tuition adjustment will be made for short-term leaves, except in cases where a student granted such leave does not return to class at the expiration of the leave and subsequently (a) withdraws or (b) is dropped for failure to return. In such cases, the termination date

for purposes of tuition adjustment shall be considered the date on which application for short term leave was granted.

4. Fees other than tuition will not be refunded in whole or in part.

PAYMENT OF BALANCES AND REFUNDS: If the amount due the College after the tuition has been adjusted exceeds the amount previously paid, the balance becomes payable on the termination date.

If payments previously made exceed the amount due after adjustment, a credit will be entered on the student's account, or a refund paid, as requested by the student in his notification of withdrawal.

Refund will be made by check mailed to the student's last known address. Approximately two weeks are required to process a refund.



Harry Wade

CURRICULUM

FULL-TIME PROGRAM (Day Division)

Of the total of 84 units for the Bachelor of Laws degree, 71 units must be completed in required courses, and the remaining 13 units in elective courses. The sequence of required courses is as follows (only first year courses will be offered in the Day Division in 1966-67):

FIRST YEAR

<i>Fall Semester</i>	<i>Units</i>	<i>Spring Semester</i>	<i>Units</i>
Civil Procedure	3	Criminal Law	3
Contracts	3	Contracts	3
Torts	3	Torts	3
Writing and Research	1	Writing and Research	1
Property	3	Property	3
Legal History	2	Legal Profession	2
Orientation	1		15
	<u>16</u>		

SECOND YEAR

Business Associations	3	Business Associations	3
Constitutional Law	3	Constitutional Law	3
Equity	2	Equity	2
Taxation—Income	2	Taxation—Income	2
Electives	3-5	Electives	3-5
	<u>13-15</u>		<u>13-15</u>

THIRD YEAR

Code Pleading	4	Conflict of Laws	3
Evidence	2	Evidence	3
Trusts and Estates	3	Trusts and Estates	3
Taxation—Estate and Gift	2	Electives	4-6
Electives	2-4		<u>13-15</u>
	<u>13-15</u>		

The elective courses totalling at least 13 units may be chosen from the following:

<i>Fall Semester</i>	<i>Units</i>	<i>Spring Semester</i>	<i>Units</i>
Family Law	2	Community Property	2
Taxation of the Business Enterprise	2	Estate Planning	2
Administrative Law	2	Trade Regulation	2
Writing and Research—Advanced	1	Writing and Research—Advanced	1
Criminal Procedure	2	Jurisprudence	2
Federal Jurisdiction	2	Creditor's Remedies	2
Commercial Transactions (I)	3	Commercial Transactions (II)	3

PART-TIME PROGRAM (Evening Division)

Seventy-three units will be offered in the Evening Division during the Fall and Spring Semesters. The remaining 11 units required for graduation must be taken in Summer Sessions. The Summer Session schedule is available by May 1.

FIRST YEAR

<i>Fall Semester</i>	<i>Units</i>	<i>Spring Semester</i>	<i>Units</i>
Torts	3	Torts	3
Civil Procedure	3	Criminal Law	3
Contracts	3	Contracts	3
Orientation	<u>1</u>		<u>9</u>
	10		

SECOND YEAR

Commercial Transactions (I)	3	Commercial Transactions (II)	3
Business Associations	3	Business Associations	3
Property	3	Property	3
	<u>9</u>		<u>9</u>

THIRD YEAR

Constitutional Law	3	Constitutional Law	3
Equity	3	Equity	1
Taxation—Income	3	Taxation—Income	1
	<u>9</u>	Taxation—Estate and Gift	2
		Community Property	2
			<u>9</u>

FOURTH YEAR

Code Pleading	4	Conflict of Laws	3
Trusts and Estates	3	Trusts and Estates	3
Evidence	2	Evidence	3
	<u>9</u>		<u>9</u>

PART-TIME PROGRAM (Morning Section)

Only second, third, and fourth year courses will be offered in the 1966-67 academic year.

SECOND YEAR

<i>Fall Semester</i>	<i>Units</i>	<i>Spring Semester</i>	<i>Units</i>
Commercial Transactions (I)	3	Commercial Transactions (II)	3
Property	3	Property	3
Family Law	2	Community Property	2
Equity	2	Equity	2
	<u>10</u>		<u>10</u>

THIRD YEAR

Constitutional Law	3	Constitutional Law	3
Business Associations	4	Business Associations	2
Trusts and Estates	3	Trusts and Estates	3
	<u>10</u>	Jurisprudence	2
			<u>10</u>

FOURTH YEAR

Evidence	2	Evidence	3
Taxation—Income	2	Taxation—Income	2
Legal Profession	2	Taxation—Estate and Gift	2
Code Pleading	4	Conflict of Laws	3
	<u>10</u>		<u>10</u>

COURSES OF INSTRUCTION

The unit value for each course is indicated by the number in parentheses after the course title. The semester or semesters in which the course is given is indicated in the curriculum on the preceding pages. Assignments of instructors are subject to change.

ADMINISTRATIVE LAW (2)

The organization, authority and procedures of administrative agencies in rule making and adjudication, and judicial review of administrative rulings and decisions. *Farber*

BUSINESS ASSOCIATIONS (6)

The legal problems of business organizations, including partnerships, corporations and other forms of multiple ownership and operation of business enterprises. *Moltzen*

CIVIL PROCEDURE (3) AND ORIENTATION (1)

The fundamentals of civil procedure at Common Law and under modern codes. A series of orientation lectures is given for all beginning students during the two weeks prior to the first meeting of their other courses in the curriculum. Attendance at these lectures and preparation of the assignments is a required part of this course. *Bridgman, Gorfinkel and The Staff*

CODE PLEADING (4)

Pleadings and parties in civil actions and special proceedings; provisional remedies. *Klaiman*

COMMERCIAL TRANSACTIONS I (3)

Sales transactions under the Uniform Commercial Code and prior acts.

Farber

COMMERCIAL TRANSACTIONS II (3)

Commercial paper under the Uniform Commercial Code and prior acts.

Farber

COMMUNITY PROPERTY (2)

The rights of the respective spouses in their property, with specific emphasis on the California law. *Heath, Sherburne*

CONFLICT OF LAWS (3)

Jurisdiction of courts, recognition and enforcement of judgments, and choice of law in multi-state transactions. *Gorfinkel*

CONSTITUTIONAL LAW (6)

The judicial function in constitutional cases; the division of powers between the federal government and the states; separation of powers within the branches of the federal government; the protection of individual rights and liberties.

Fike, Melchior

CONTRACTS (6)

Formation of contracts; offer and acceptance; consideration; assignments; third party beneficiaries; statute of frauds; legality; performance; discharge.

Smith

CREDITOR'S REMEDIES (2)

State and Federal procedures and remedies affecting debtor and creditor.

CRIMINAL LAW (3)

The elements of and defenses applying to criminal acts in general; various specific crimes; criminal procedure. *Klaiman*

EVIDENCE (5)

The problems of proof and the use, adequacy and admissibility of oral testimony and documentary materials in trials before judicial and administrative tribunals. *Bader, Paul*

EQUITY (4)

The origins, historical development and present significance of equity jurisdiction, procedures and remedies. *Golden*

ESTATE PLANNING (2)

An advanced course on the problems of disposition of property with particular reference to income, estate, and gift tax consequences.

FAMILY LAW (2)

Family status, including marriage, divorce, annulment and separation; rights and obligations of parent and child; property and support rights and agreements. *Heath*

FEDERAL JURISDICTION (2)

Jurisdiction of the Federal Courts, including diversity jurisdiction, jurisdiction under Federal statutes and in constitutional cases. *Hannawalt*

JURISPRUDENCE (2)

A study of selected writings on the theory and philosophy of law and legal institutions. *Bader*

LABOR LAW (2)

Common law sources and statutes applicable to the employer-employee relationship.

LEGAL HISTORY (2)

Lectures by members of the faculty and guest lecturers on the origin and development of the Common Law and selected legal institutions.

LEGAL PROFESSION (2)

The duties, responsibility and functions of an attorney at law. Satisfactory completion of this course is required of all candidates for the degree.

PROPERTY (6)

Adverse possession; remedies of a possessor; bona fide purchasers of personal property; the recording acts; estates in land; concurrent ownership; the statute of uses; landlord and tenant; land sale contracts; mortgages; deeds; covenants; easements. *Golden*

SECURITY TRANSACTIONS (2)

Security interests in land and chattels.

SEMINAR IN SELECTED LEGAL PROBLEMS (2)

Individual research in selected legal problems. Prerequisites: Admission to the third year of law school and approval of the Dean. *The Staff*

TAXATION—ESTATE & GIFT (2)

A detailed study of the Federal Estate and Gift Taxes. *Harlick*

TAXATION—INCOME (4)

A detailed study of the Federal Income Tax. *Maier*

TAXATION OF THE BUSINESS ENTERPRISE (2)

An advanced course in the problems of Federal income taxation of corporate and related business enterprises. Prerequisite: satisfactory completion of a law school course in Federal Income Taxation or equivalent study and approval of the instructor. *Maier*

TORTS (6)

The law of civil injuries, including intended and unintended interference with personal and property interests and liability without fault. *Jones*

TRADE REGULATION (2)

Common law sources and statutes applicable to trade practices with particular emphasis on antitrust and unfair competition. *Farber*

TRUSTS AND ESTATES (6)

The law relating to the control and disposition of property inter vivos and after death; wills, intestate succession, trusts, and future interests.

Lawrence, Saltzman

WRITING AND RESEARCH (2)

The nature and use of law library materials and facilities; participation in a moot court proceeding, requiring preparation and presentation of legal memoranda, briefs and oral arguments. *Sherburne and The Staff*

WRITING AND RESEARCH—ADVANCED COURSE (1)

A program of directed study and research, limited to selected students. This course may be taken for a maximum of four semesters' credit. *The Staff*



Harry Wade

1

2

3

4

5

6

7

8

9

10

11

12

13

14

15

16

17

18

19

20

21

22

23

24

25

