

2004

The California Land Conservation (Williamson) Act 2004 Status Report

California Department of Conservation

Follow this and additional works at: http://digitalcommons.law.ggu.edu/caldocs_agencies



Part of the [Land Use Law Commons](#)

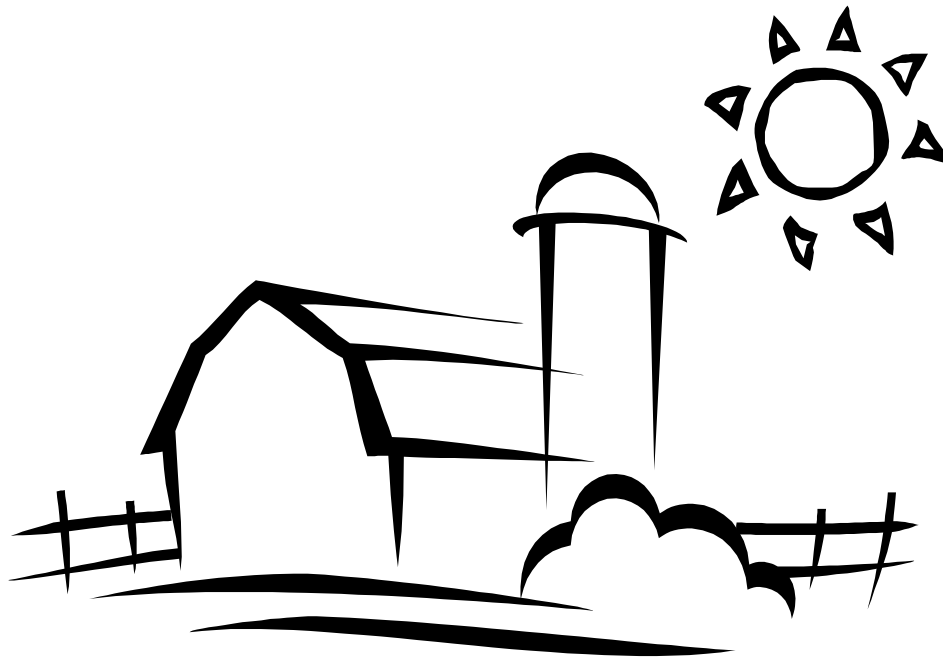
Recommended Citation

California Department of Conservation, "The California Land Conservation (Williamson) Act 2004 Status Report" (2004). *California Agencies*. Paper 398.

http://digitalcommons.law.ggu.edu/caldocs_agencies/398

This Committee Report is brought to you for free and open access by the California Documents at GGU Law Digital Commons. It has been accepted for inclusion in California Agencies by an authorized administrator of GGU Law Digital Commons. For more information, please contact jfischer@ggu.edu.

The California Land Conservation (Williamson) Act



2004 Status Report

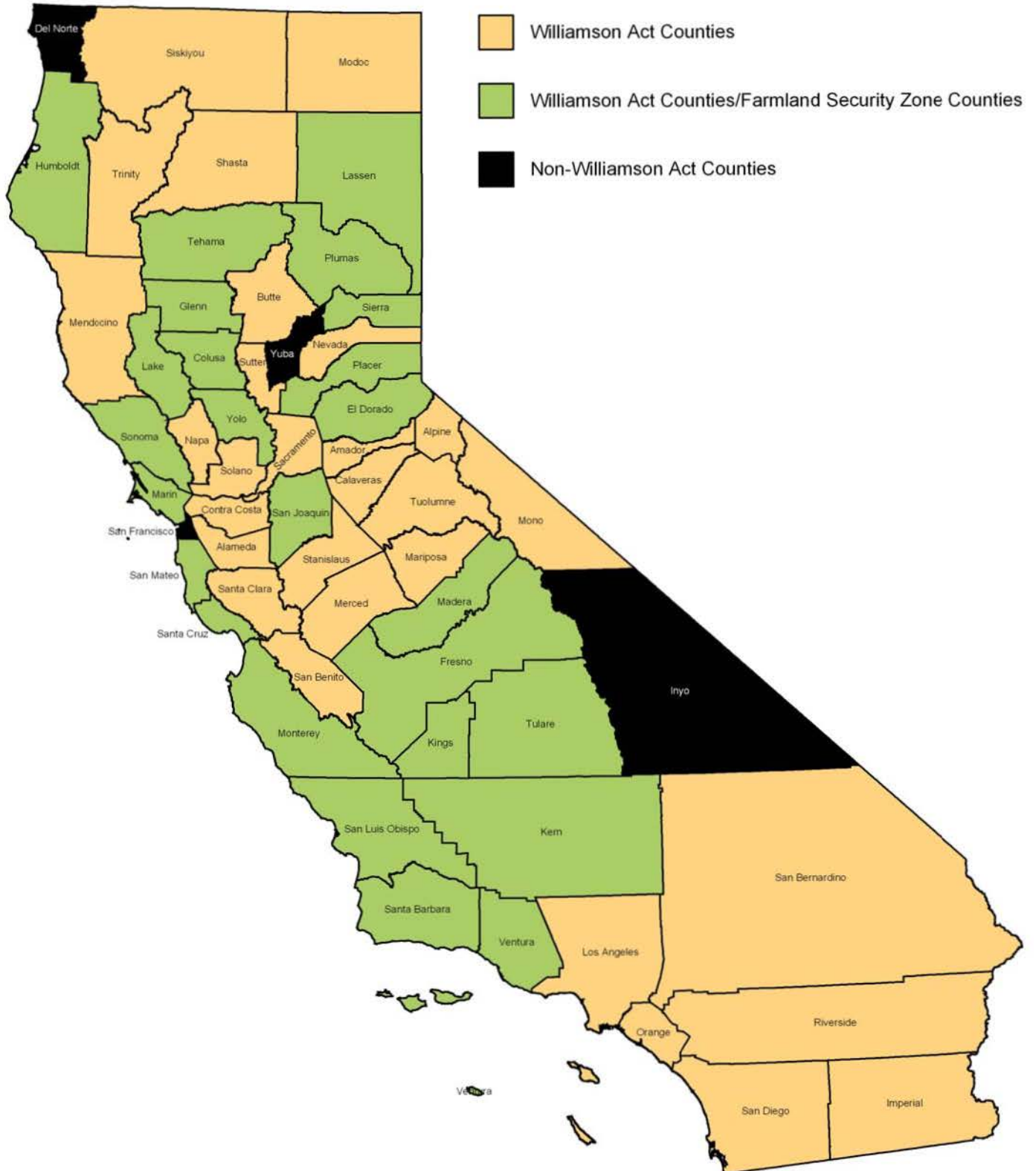


Arnold Schwarzenegger
Governor
State of California

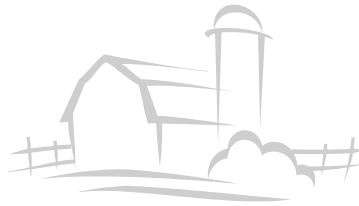
Mike Chrisman
Secretary for Resources
The Resources Agency

Debbie Sareeram
Interim Director
Department of Conservation

County Participation



California
Land Conservation (Williamson) Act
Status Report
2004



Williamson Act Program
California Department of Conservation

May 2004

TABLE OF CONTENTS

INTRODUCTION.....	1	V. COMPLIANCE AUDITS.....	21
I. ENROLLMENT SNAPSHOT: JANUARY 1, 2003.....	2	APPENDIX A. SIGNIFICANT LEGISLATION.....	22
Williamson Act Regions.....	3	APPENDIX B. ABOUT THE WILLIAMSON ACT.....	23
II. ENROLLMENT CHANGE SUMMARIES AND TRENDS		APPENDIX C. DATA TABLES.....	24
Net Acreage Increases and Decreases.....	4	Total Reported Enrollment (2002, 2003).....	25, 26
New Enrollments.....	5	Farmland Security Zone Transfers (2002, 2003).....	27, 28
Farmland Security Zone Transfers.....	6	Cumulative Nonrenewal Acreage (LCA: 2002/2003).....	29
Nonrenewal Initiations.....	7	Cumulative Nonrenewal Acreage (FSZ: 2002, 2003).....	30, 31
Nonrenewal Expirations.....	8	New Enrollments (2002, 2003).....	32, 33
Cancellations.....	9	Nonrenewal Initiations (2002/2003).....	34
Public Acquisitions.....	10	Nonrenewal Expirations (2002/2003).....	35
City Annexations.....	11	Nonrenewals Withdrawn (LCA: 2002/2003).....	36
Net Adjustments.....	12	Cancellations (2002, 2003).....	37, 38
Contract Termination Trends.....	13	Public Acquisitions (2002, 2003).....	39, 40
Cumulative Nonrenewal Trends.....	14	City Annexations (2002, 2003).....	41, 42
Cumulative Nonrenewal Trends (Continued).....	15	Williamson Act Easement Exchange (2002/2003).....	43
Farmland Security Zone Trends.....	16	Net Adjustments (2002, 2003).....	44, 45
Trends Over The Decade.....	17	Land Not Receiving Tax Relief (2002, 2003).....	46, 47
III. OPEN SPACE SUBVENTION ACT PAYMENTS.....	18	Eligible for Subvention Payment (2002, 2003).....	48, 49
IV. SURVEYS		Open Space Subvention Payment (2002, 2003).....	50, 51
Williamson Act Contracts Within Cities.....	19		
Program Administration.....	20		

INTRODUCTION



Providing information, maps, funding and technical assistance to local governments, consultants, Resource Conservation Districts and non-profit organizations statewide with the goal of conserving the state's agricultural and natural resources.

--Division of Land Resource Protection's Mission Statement

The California Land Conservation (Williamson) Act

The California Land Conservation Act, better known as the Williamson Act, has been the state's premier agricultural land protection program since its enactment in 1965. The Williamson Act preserves agricultural and open space lands through property tax incentives and voluntary restrictive use contracts. Private landowners voluntarily restrict their land to agricultural and compatible open-space uses under minimum 10-year rolling term contracts with local governments. In return, restricted parcels are assessed for property tax purposes at a rate consistent with their actual use, rather than potential market value. In August of 1998, the Legislature enhanced the Williamson Act with the farmland security zone (FSZ) provisions. The FSZ provisions offer landowners greater property tax reduction in return for a minimum rolling contract term of 20 years. For more information about the Williamson Act please refer to Appendix B.

About This Report

This biennial report is a compilation of statewide enrollment data for the Williamson Act. The focus of this report is Williamson Act enrollment as of January 1, 2002 and January 1, 2003. However, enrollment data from prior years are included to provide context in certain discussions. Nearly all of the enrollment data were gathered from applications for payment under the Open Space Subvention Act. The applications are submitted annually to the Department by participating counties and cities. Several cities that administer Williamson Act contracts do not submit applications. As such, the total amount of contracted land may be negligibly understated in this report. Appendix C contains the data tables used to generate the charts and graphics featured in this report.

A small amount of non-Williamson Act, enforceably restricted land is included in this report. Except for Appendix C, this "Other Enforceable Restriction" is mingled with the Williamson Act totals and accounts for less than one percent of the total reported acreage.

This report is mandated by State law and is primarily a report to the Legislature. However, this report is also made available to other audiences, including local governments, researchers, and interested statewide organizations. All audiences may find this report useful as a tool for educational purposes, for anticipating farmland conversion trends, for tracking land use trends, for facilitating program comparisons among participating local governments, and for demonstrating the Williamson Act's relative effectiveness.

For More Information, Please Contact:

California Department of Conservation
Division of Land Resource Protection
801 'K' Street, MS 18-01
Sacramento, CA 95814-3528
Phone: (916) 324-0850
FAX: (916) 327-3430

Email: dlrp@consrv.ca.gov
www.conservation.ca.gov/dlrp/

I. ENROLLMENT SNAPSHOT: JANUARY 1, 2003

As of January 1, 2003, 16.6 million acres were enrolled under the Williamson Act statewide. This represents over half of California's farmland total of about 30 million acres, and nearly one-third of the state's privately owned land.

Of California's 58 counties, 54 have adopted the Williamson Act program (Alpine County and Los Angeles County have adopted the program, but have yet to execute a contract). Del Norte, San Francisco, Inyo, and Yuba Counties have not adopted the Williamson Act program as of the snapshot date.

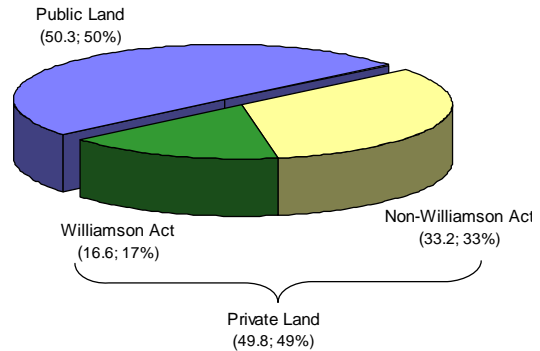
Modoc County adopted the program and reported its first enrollments in January 1, 2003. In its first year, Modoc County enrolled 30,703 acres of land into its Williamson Act program.

The Farmland Security Zone (FSZ) program has been adopted by 25 counties, although not all of the counties have executed contracts. Nineteen counties reported a total of 763,175 acres of land under FSZ contract, which constituted nearly 5 percent of the statewide Williamson Act enrollment.

On January 1, 2003, there were 214,830 acres of contracted land at some stage of the nonrenewal process. The cumulative nonrenewal acreage constituted 1.2 percent of statewide Williamson Act enrollment.

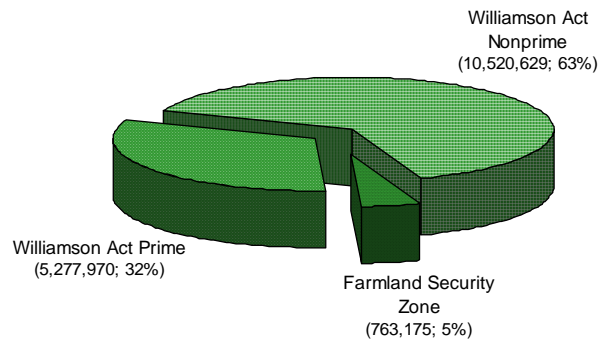
Participating local governments claimed \$39,242,234 in Open Space Subvention Act payments for the partial replacement of property tax revenue losses associated with contract enrollment as of January 1, 2003. That subvention claim is the largest since subvention payments started in fiscal year 1972-73.

**California Land Use
(Million Acres; Percentage)**



Source: Department of Conservation: 2004 and California Almanac, Pacific Data Resources: 1991

**Williamson Act Acreage By Category
(Acres; Percentage)**



I. WILLIAMSON ACT REGIONS



II. ENROLLMENT CHANGE SUMMARIES AND TRENDS

Net Acreage Increases and Decreases

Net Enrollment Increase

In 2002, Merced County's Williamson Act program continued to grow, adding 21,459 acres of prime farmland and 53,664 acres of nonprime land to its program. In two years Merced County enrolled 417,318 acres into its Williamson Act program. Newcomers Imperial, Sutter, and Mono County also increased the enrollment of their new programs. In 2002, Imperial County tripled and Sutter County quintupled the amount of acreage under their Williamson Act programs in 2001.

In 2003, Modoc County launched its new Williamson Act program and placed over 30,000 acres into contract. Merced County's drop in the Top 10 rankings could be an indication that its enrollment is stabilizing.

Net Enrollment Decrease

For 2002, Yolo County owes its top ranking in "Enrollment Decrease" to a significant amount of nonrenewal expirations and public acquisitions. Madera County's ranking in 2002 is attributable to the lost of over 8,461 acres through nonrenewal expirations.

In 2003, Kings and Fresno County topped the net decrease rankings due to contracted acreage lost through public acquisitions. Combined, Kings and Fresno County reported the loss of over 31,000 acres of contracted land due to public acquisitions. Of those 31,000 acres, over 96 percent was prime farmland, including 12,700 acres of FSZ contracted land in Kings County.

Statewide, the Williamson Act program grew by 215,699 acres during 2002 and 2003. In comparison, the Williamson Act program grew by 367,317 acres during 2000 and 2001.

Cross-Reference: Appendix C (p. 25, 26)

Top 10 Counties with the Largest Enrollment Increase (Net)

2002				2003			
Ranking		County	Acres	Ranking		County	Acres
2001	2002			2002	2003		
1	1	Merced	75,123	n/a	1	Modoc*	30,730
2	2	Imperial	68,041	3	2	Sutter	12,620
6	3	Sutter	31,844	2	3	Imperial	12,440
4	4	Glenn	7,296	12	4	Monterey	7,912
3	5	San Luis Obispo	7,058	4	5	Glenn	7,686
9	6	Colusa	5,573	n/a	6	Lassen	5,655
n/a	7	San Benito	4,083	6	7	Colusa	4,118
17	8	Mariposa	3,998	1	8	Merced	4,040
8	9	Shasta	3,668	14	9	Mono	2,443
n/a	10	Kings	3,497	7	10	San Benito	2,040

*Newly enrolled county as of January 1, 2003

Top 10 Counties with the Largest Enrollment Decrease (Net)

2002				2003			
Ranking		County	Acres	Ranking		County	Acres
2001	2002			2002	2003		
n/a	1	Yolo	-15,367	n/a	1	Kings	-19,268
9	2	Madera	-7,579	16	2	Fresno	-10,633
4	3	Santa Clara	-4,834	n/a	3	San Luis Obispo	-4,818
n/a	4	Calaveras	-4,664	1	4	Yolo	-2,763
18	5	El Dorado	-4,189	9	5	Solano	-2,681
5	6	San Diego	-4,117	25	6	Tulare	-2,383
n/a	7	Marin	-4,004	8	7	Kern	-2,163
n/a	8	Kern	-3,896	n/a	8	Plumas	-1,674
6	9	Solano	-2,830	27	9	Tehama	-1,369
n/a	10	Lassen	-2,599	12	10	Alameda	-796

New Enrollments

A new enrollment is the execution of a contract, resulting in an increase in the amount of restricted acreage.

New enrollments are filed with the anticipation of maintaining the contracted land in agriculture for at least ten years. As such, new enrollments may be seen as an indicator of agricultural stability in a particular location.

In 2002, the amount of new enrollments decreased by 230,780 acres statewide compared to 2001. The decrease in new enrollments between 2002 and 2001 is primarily due to a slow-down in Merced County’s rate of new enrollment. Newcomers Merced, Imperial, and Sutter County led the Top 10 rankings for 2002. Santa Clara County’s jump in the rankings was largely due to the enrollment of 9,748 acres of nonprime land under a single contract.

In 2003, the amount of new enrollments decreased by 143,725 acres statewide compared to 2002. Modoc County enrolled Williamson Act contracts for the first time in 2003. Glenn and Colusa County continue to outpace other counties in the amount of new enrollments under FSZ contract. Glenn and Colusa County together enrolled more land under FSZ contract during 2002 and 2003 than all the other counties combined during that same period.

Statewide, new enrollments averaged 131,386 acres annually from 1991 to 2001. In comparison, new enrollments in 2002 were above that annual average, while in 2003 they were slightly below. Since 1991, the greatest amount of new acreage was enrolled in 2001 (497,503) and the least in 1993 (60,193). The amount of new enrollments reported in 2002 and 2003 suggests that new enrollment levels are headed back down to pre-2001 averages. This represents a return to “normal” rates of increase after an enrollment increase spike from the five new counties.

Cross-Reference: Appendix C (p. 32, 33)

Top 10 Counties with the Greatest Amount of New Enrollments

2002				2003			
Ranking		County	Acres	Ranking		County	Acres
2001	2002			2002	2003		
1	1	Merced	75,188	n/a	1	Modoc*	30,730
2	2	Imperial	68,605	3	2	Sutter	12,621
6	3	Sutter	31,844	2	3	Imperial	12,440
10	4	Kern	11,582	15	4	Monterey	7,912
34	5	Santa Clara	9,879	6	5	Glenn	7,745
4	6	Glenn	7,296	7	6	San Luis Obispo	4,131
3	7	San Luis Obispo	6,594	8	7	Colusa	4,118
9	8	Colusa	6,176	4	8	Kern	4,115
24	9	Kings	4,565	1	9	Merced	4,070
37	10	San Benito	4,193	21	10	Fresno	3,077

*Newly enrolled county as of January 1, 2003

Regional Ranking by the Amount of New Enrollments

2002		2003	
Region	Acres	Region	Acres
San Joaquin Valley	100,343	North Coast & Mountain	37,595
South Coast & Desert	71,740	Sacramento Valley	30,797
Sacramento Valley	51,287	San Joaquin Valley	18,886
Bay & Central Coast	24,677	Bay & Central Coast	16,304
Foothill & Sierra	9,466	South Coast & Desert	13,628
North Coast & Mountain	9,209	Foothill & Sierra	5,789
Total	266,723	Total	122,998

Farmland Security Zone Transfers

A farmland security zone (FSZ) transfer is the rescission of an existing Williamson Act contract with the concurrent creation of a FSZ contract on the same land. FSZ transfers do not result in a net change to the amount of contracted acreage within a county.

FSZ transfers signify a long-term agricultural commitment in particular areas. This commitment is made possible only upon deliberate action by the county in adopting the FSZ program and, subsequently, by the landowner in petitioning for the FSZ transfer.

In 2002, the amount of FSZ transfers increased by 32,126 acres statewide compared to 2001. FSZ transfers surged once again in Kern County, propelling Kern to the top of the rankings where it was in 2000. Kings County has been a permanent fixture on this Top 10 list, while Sierra County made its first appearance on the Top 10 list after joining the FSZ program in 2002. Of the 128,492 acres that were transferred into FSZ contracts statewide in 2002, over 92 percent was prime farmland.

In 2003, the amount of FSZ transfers decreased by 82,219 acres statewide compared to 2002. The amount of contracted land transferred into FSZ contracts in 2003 was the smallest since the program’s inception in 1999. Lassen County’s FSZ program skyrocketed in 2003, resulting in a FSZ program seventeen times larger than what is was in 2002. The growth of Lassen County’s FSZ program in 2003 was accomplished primarily through FSZ transfers. Of the 46,273 acres that were transferred into FSZ contracts statewide in 2003, over 66 percent was prime farmland.

Cross-Reference: Appendix C (p. 27, 28)

Top 10 Counties with the Greatest Amount of FSZ Transfers

2002				2003			
Ranking		County	Acres	Ranking		County	Acres
2001	2002			2002	2003		
3	1	Kern	43,988	n/a	1	Lassen	16,693
8	2	Kings	25,095	1	2	Kern	8,563
11	3	Colusa	17,270	7	3	Monterey	7,485
10	4	Fresno	14,069	5	4	Madera	3,959
1	5	Madera	9,406	11	5	Tehama	3,916
2	6	Glenn	7,144	8	6	San Joaquin	1,819
9	7	Monterey	3,510	10	7	Sierra	1,791
5	8	San Joaquin	2,365	2	8	Kings	780
4	9	Marin	2,233	6	9	Glenn	477
n/a	10	Sierra	1,701	9	10	Marin	398

Regional Ranking by the Amount of FSZ Transfers

2002		2003	
Region	Acres	Region	Acres
San Joaquin Valley	95,323	North Coast & Mountain	16,693
Sacramento Valley	25,071	San Joaquin Valley	15,122
Bay & Central Coast	5,743	Bay & Central Coast	7,882
Foothill & Sierra	1,701	Sacramento Valley	4,605
South Coast & Desert	653	Foothill & Sierra	1,791
North Coast & Mountain	0	South Coast & Desert	181
Total	128,492	Total	46,273

Nonrenewal Initiations

The initiation of nonrenewal on a contract by either the landowner or the local government.

Nonrenewals are often filed with the anticipation of converting farmland to other uses. As such, nonrenewal trends may be seen as an indicator of likely farmland conversion in particular locations.

In 2002, the amount of acreage entering nonrenewal increased by 9,533 acres statewide compared to 2001. The Bay & Central Coast region, lead by Santa Clara and San Benito County, continued to hover near the top of the regional rankings. Nonrenewals in Stanislaus County spiked with the nonrenewal of over 5,200 acres of nonprime land.

In 2003, the amount of acreage entering nonrenewal increased by 5,423 acres statewide compared to 2002. San Joaquin County reported a large amount of prime land entering nonrenewal, accounting for nearly half of the total amount of land entering nonrenewal statewide.

Statewide, nonrenewal has been initiated on an average of 40,968 acres annually from 1991 to 2001. In comparison, nonrenewal initiations in 2002 and 2003 were well below that average. Since 1991, nonrenewal was initiated on the most contracted acreage in 1991 (145,755) and the least in 1997 (15,259).

Cross-Reference: Appendix C (p. 34)

Top 10 Counties with the Greatest Amount of Nonrenewal Initiations

2002				2003			
Ranking		County	Acres	Ranking		County	Acres
2001	2002			2002	2003		
22	1	Stanislaus	5,782	16	1	San Joaquin	14,945
16	2	Santa Clara	4,123	11	2	Placer	3,132
2	3	San Benito	2,417	1	3	Stanislaus	2,661
10	4	Kern	1,971	4	4	Kern	1,429
8	5	Santa Barbara	1,766	18	5	Calaveras	1,311
25	6	Ventura	1,203	15	6	Yolo	994
9	7	Tehama	1,143	5	7	Santa Barbara	784
n/a	8	Contra Costa	1,003	21	8	Solano	761
15	9	Fresno	908	12	9	Tulare	749
26	10	Amador	680	22	10	Napa	737

Regional Ranking by the Amount of Nonrenewal Initiations

2002		2003	
Region	Acres	Region	Acres
San Joaquin Valley	9,979	San Joaquin Valley	20,175
Bay & Central Coast	8,177	Foothill & Sierra	4,962
South Coast & Desert	3,424	Sacramento Valley	3,254
Sacramento Valley	2,310	Bay & Central Coast	1,481
Foothill & Sierra	1,619	South Coast & Desert	1,048
North Coast & Mountain	173	North Coast & Mountain	184
Total	25,681	Total	31,104

Nonrenewal Expirations

A nonrenewal expiration is the termination of a contract as a result of completing the nonrenewal process.

By far, most contracts are terminated through nonrenewal expiration. Upon the expiration of a contract, the restrictions are removed and the property tax assessment, which has been gradually increasing from the Williamson Act level over the nonrenewal period, returns to its full market value.

In 2002, the amount of contracted land terminated through nonrenewal expirations decreased by 37,003 acres statewide compared to 2001. Nonrenewal expirations in Madera and Yolo County continued to surge in 2002. Madera County has gone from unranked (no nonrenewal expirations) in 2000, to Rank 4 in 2001, to Rank 1 in 2002. Yolo County has finished in the top three since 2000, losing nearly 30,000 acres through nonrenewal expiration during that three-year period.

In 2003, nonrenewal expirations decreased by 21,200 acres statewide compared to 2002. Solano County has made the Top 10 list in this category since 2000, losing 14,800 acres of contracted land through nonrenewal over the last four years. After three years in the top three, Yolo County dropped off the Top 10 chart for 2003.

Statewide, the amount of land terminated through nonrenewal expirations averaged 67,813 acres annually from 1991 to 2001. In comparison, nonrenewal expirations in 2002 and 2003 were well below that annual average. Since 1991, the most contracted acreage expired through nonrenewal in 1999 (118,391) and the least in 2003 (16,527).

Cross-Reference: Appendix C (p. 35)

Top 10 Counties with the Greatest Amount of Nonrenewal Expirations

2002				2003			
Ranking		County	Acres	Ranking		County	Acres
2001	2002			2002	2003		
4	1	Madera	8,461	5	1	Solano	3,073
3	2	Yolo	5,046	17	2	Tehama	1,750
22	3	El Dorado	4,387	14	3	Butte	1,647
2	4	Kern	3,487	6	4	San Joaquin	1,638
7	5	Solano	3,072	10	5	Kings	1,466
9	6	San Joaquin	2,627	1	6	Madera	1,362
16	7	Calaveras	1,581	n/a	7	Siskiyou	853
5	8	Sacramento	1,422	25	8	Tulare	830
n/a	9	Nevada	1,412	n/a	9	San Benito	726
11	10	Kings	854	16	10	Fresno	554

Regional Ranking by the Amount of Nonrenewal Expirations

2002		2003	
Region	Acres	Region	Acres
San Joaquin Valley	16,020	Sacramento Valley	7,102
Sacramento Valley	10,259	San Joaquin Valley	5,931
Foothill & Sierra	8,284	Bay & Central Coast	1,254
South Coast & Desert	1,349	North Coast & Mountain	893
Bay & Central Coast	1,243	Foothill & Sierra	814
North Coast & Mountain	571	South Coast & Desert	533
Total	37,727	Total	16,527

Cancellations

A cancellation is the immediate termination of a contract by a landowner, which requires payment of a cancellation fee and board/council approval based on rigorous findings.

State law limits the use of cancellation to narrow conditions. Due to the specific findings required for a board or council to approve a contract cancellation, only a small fraction of yearly contract terminations occur as a result of cancellation.

In 2002, the amount of contracted land terminated through cancellation decreased by 402 acres statewide compared to 2001. The 161 acres cancelled statewide in 2002 is the second smallest amount reported since in 1987. Fresno County reported cancellations by the City of Clovis for residential development. Kern County reported a cancellation of 30 acres for an electrical generating facility, resulting in \$625,000 in cancellation fees. A 20-acre residential development within the City of San Jose resulted in \$859,375 in cancellation fees, as reported by Santa Clara County.

In 2003, cancellations increased by 349 acres statewide compared to 2002. Sacramento County reported the first cancellation by the newly incorporated City of Elk Grove for residential development. The City of Elk Grove cancellation resulted in a cancellation fee of \$775,000. In Placer County, the City of Lincoln approved a cancellation for senior housing, resulting in a \$87,500 cancellation fee.

Statewide, an average of 1,477 acres were cancelled annually from 1991 to 2001. In comparison, the amounts of contracted land cancelled in 2000 and in 2001 were well below that average.

Cross-Reference: Appendix C (p. 37, 38)

Top 10 Counties with the Greatest Amount of Cancellations

2002				2003			
Ranking		County	Acres	Ranking		County	Acres
2001	2002			2002	2003		
2	1	Fresno	67	n/a	1	Riverside	165
8	2	Kern	49	n/a	2	Sacramento	155
6	3	Kings	24	1	3	Fresno	128
n/a	4	Santa Clara	21	2	4	Kern	39
				n/a	5	Placer	23
				n/a	6	Sutter	1

Regional Ranking by the Amount of Cancellations

2002		2003	
Region	Acres	Region	Acres
San Joaquin Valley	140	San Joaquin Valley	167
Bay & Central Coast	21	South Coast & Desert	165
Foothill & Sierra	0	Sacramento Valley	156
North Coast & Mountain	0	Foothill & Sierra	23
Sacramento Valley	0	Bay & Central Coast	0
South Coast & Desert	0	North Coast & Mountain	0
Total	161	Total	510

Public Acquisitions

A public acquisition is the immediate termination of an enforceable restriction through eminent domain, or in lieu of eminent domain, by a public agency. The public agency may need to make specific findings and notify the Director of Conservation.

Williamson Act contracted land is acquired by public entities for a wide range of public improvements. Wildlife habitat, water resource management, public open space, and schools are common reasons for publicly acquiring contracted land. Before acquiring contracted lands, public agencies must make findings that there is no other nearby noncontracted land available for the purpose, and that the lower cost of contracted land did not influence their decision.

In 2002, the amount of contracted land publicly acquired increased by 29,984 acres compared to 2001. The Wildlife Conservation Board publicly acquired over 12,000 acres of contracted land in Yolo County in 2002. In Santa Clara County, open space districts acquired most of the contracted land for open space purposes.

In 2003, the amount of contracted land publicly acquired increased by 4,816 acres compared to 2002. In Kings County the Westlands Water District acquired 13,252 acres of contracted land, including 12,797 acres of FSZ land. Kings County also reported the acquisition of 3,068 acres of contracted land by the Castaic Lake Water Agency. In San Luis Obispo County, the California Department of Fish and Game was solely responsible for the acquisitions.

Statewide, public acquisitions averaged 23,232 acres annually from 1991 to 2001. In comparison, the amount of contracted land acquired for public purposes in 2002 and 2003 was more than double that annual average. Although 2002 set a new record high (since 1991) for the amount of contracted acres publicly acquired, that short-lived record was topped in 2003.

Cross-Reference: Appendix C (p. 39, 40)

Top 10 Counties with the Greatest Amount of Public Acquisitions

2002				2003			
Ranking		County	Acres	Ranking		County	Acres
2001	2002			2002	2003		
14	1	Yolo	12,823	17	1	Kings	17,979
n/a	2	Santa Clara	9,480	6	2	Fresno	13,102
5	3	Kern	8,991	n/a	3	San Luis Obispo	9,411
1	4	San Diego	8,817	3	4	Kern	6,643
n/a	5	Lake	1,675	2	5	Santa Clara	2,221
3	6	Fresno	1,512	19	6	Solano	1,467
16	7	Alameda	1,306	8	7	Tulare	1,174
4	8	Tulare	1,191	1	8	Yolo	778
n/a	9	Siskiyou	980	13	9	Stanislaus	363
2	10	Colusa	633	7	10	Alameda	360

Regional Ranking by the Amount of Public Acquisitions

2002		2003	
Region	Acres	Region	Acres
Sacramento Valley	13,645	San Joaquin Valley	39,444
San Joaquin Valley	12,261	Bay & Central Coast	12,023
Bay & Central Coast	11,320	Sacramento Valley	2,559
South Coast & Desert	8,818	North Coast & Mountain	46
North Coast & Mountain	2,798	South Coast & Desert	10
Foothill & Sierra	424	Foothill & Sierra	0
Total	49,265	Total	54,081

City Annexations

A city annexation is the succession or immediate termination of a contract upon the annexation of contracted land by a city. A valid city protest is required to terminate a contract, as determined by the local agency formation commission.

Certain contracts executed prior to 1991 may be terminated through city annexation only if the city filed a valid protest upon county notification at the time of contract formation. At present the total amount of contracted acreage covered by protested contracts statewide is unknown.

In 2002, the amount of contracted land annexed by cities increased by 2,419 acres compared to 2001. Within Santa Clara County, the City of Gilroy annexed 1,357 acres consisting mainly of nonprime contracted land. The cities of Corona and Murrieta succeeded to contracted land from Riverside County.

In 2003, the amount of contracted land annexed by cities decreased by 376 acres compared to 2002. The City of Portola succeeded to 1,865 acres of nonprime contracted land in Plumas County. Alameda County reported annexations of nonprime contracted land by the City of Dublin (475 acres) and the City of Livermore (29 acres).

Statewide, an average of 3,489 acres of contracted land have been annexed to cities annually from 1991 to 2001. In comparison, the amount of contracted acreage annexed to cities in 2002 mirrored that average, while in 2003 it was slightly below.

Cross-Reference: Appendix C (p. 41, 42)

Top 10 Counties with the Greatest Amount of City Annexations

Ranking		2002		Ranking		2003	
2001	2002	County	Acres	2002	2003	County	Acres
n/a	1	Santa Clara	1,377	n/a	1	Plumas	1,865
6	2	Riverside	617	8	2	Alameda	505
n/a	3	Kern	453	4	3	Tulare	289
1	4	Tulare	415	2	4	Riverside	195
2	5	Stanislaus	178	7	5	Kings	152
n/a	6	Fresno	171	5	6	Stanislaus	43
n/a	7	Kings	139	n/a	7	Solano	31
n/a	8	Alameda	102	10	8	San Joaquin	20
n/a	9	Madera	16				
3	10	San Joaquin	10				

Regional Ranking by the Amount of City Annexations

2002		2003	
Region	Acres	Region	Acres
Bay & Central Coast	1,479	Foothill & Sierra	1,865
San Joaquin Valley	1,381	Bay & Central Coast	505
South Coast & Desert	617	San Joaquin Valley	504
Foothill & Sierra	0	South Coast & Desert	195
North Coast & Mountain	0	Sacramento Valley	31
Sacramento Valley	0	North Coast & Mountain	0
Total	3,477	Total	3,101

Net Adjustments

Adjustments may be the reconciliation of errors in records or previous reports, re-mappings or re-surveys, lot line adjustments, and/or parcel divisions.

Annually accounting for all of the changes that occur to the 16 million acre Williamson Act program is a big task performed by local governments. The net adjustments category is partly a byproduct of the elimination of errors that occur in local government enrollment data. The category is also a byproduct of imperfect forms that local governments must use to report enrollment data.

San Diego, Calaveras, and Marin County’s ranking in 2002 is the result of making adjustments to reconcile errors in previous reports. Santa Clara County’s ranking in 2002 was influenced by a compliance audit by the California Department of Finance.

In 2003, Lassen and Santa Clara County’s ranking is the result of making adjustments to reconcile errors in previous reports. Adjustments in Yolo County were influenced by a compliance audit by the California Department of Finance.

Cross-Reference: Appendix C (p. 44, 45)

Top 10 Counties with the Greatest Amount of Adjustments (Net)

2002				2003			
Ranking		County	Acres	Ranking		County	Acres
2001	2002			2002	2003		
n/a	1	San Diego	5,314	5	1	Lassen	3,084
n/a	2	Calaveras	-4,192	4	2	Santa Clara	2,369
n/a	3	Marin	-4,004	10	3	Yolo	-1,492
n/a	4	Santa Clara	-3,788	n/a	4	Amador	1,471
13	5	Lassen	-3,310	17	5	Lake	1,319
18	6	Kern	-2,498	3	6	Marin	1,180
5	7	Mendocino	-1,383	9	7	San Luis Obispo	785
7	8	Madera	-804	n/a	8	Shasta	-545
10	9	San Luis Obispo	740	14	9	Napa	-518
1	10	Yolo	634	6	10	Kern	404

Regional Ranking by the Amount of Adjustments (Net)

2002		2003	
Region	Acres	Region	Acres
Bay & Central Coast	-7,038	North Coast & Mountain	4,157
North Coast & Mountain	-4,537	Bay & Central Coast	3,573
South Coast & Desert	4,288	Sacramento Valley	-1,623
Foothill & Sierra	-4,083	Foothill & Sierra	1,476
San Joaquin Valley	-3,985	South Coast & Desert	-258
Sacramento Valley	374	San Joaquin Valley	241
Total	-14,981	Total	7,566

Contract Termination Trends

Statutorily, there are five ways to terminate a Williamson Act contract: nonrenewal, cancellation, public acquisition, city annexation, and easement exchange. For reporting purposes, acreage may also be removed on paper via "Net Adjustments".

Nonrenewal: The nonrenewal process is the most significant mechanism for the termination of Williamson Act contracted land. Since 1991, more contracted acreage has been terminated through nonrenewal expiration than all of the other methods of termination combined. Statewide, an average of 61,533 acres of contracted land has expired annually from 1991 to 2003. Over that time period, the greatest amount of contracted acreage expired in 1999 (118,391 acres) and the least in 2003 (16,527 acres).

Public acquisition: Since 1991, more contracted acreage has been terminated through public acquisitions than through city annexations, cancellations, and easement exchanges combined. Statewide, an average of 27,607 acres of contracted land was acquired for public purposes each year from 1991 to 2003. Over that time period, the greatest amount of contracted acreage was acquired in 2003 (54,081 acres) and the least in 1998 (9,493 acres).

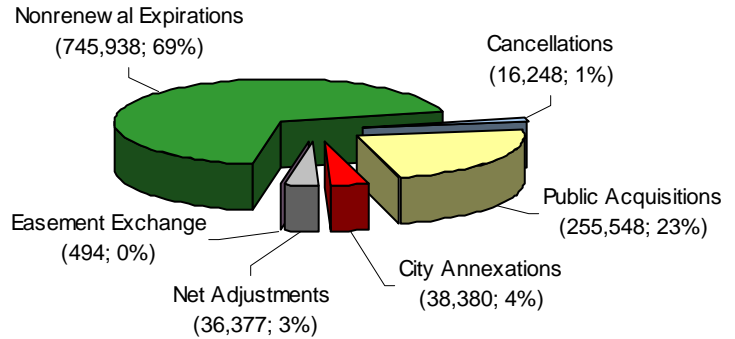
Net adjustments: A "Net Adjustment" is not a true method of contract termination. Since 1994, the largest net adjustment occurred in 1995 (20,239 acres removed) and the smallest in 1996 (4,394 acres added).

City annexation: The actual amount of contracted land terminated through annexation is overstated since this analysis assumes that affected contracts are terminated, not succeeded to, upon annexation. Statewide, an average of 3,458 acres of contracted land was annexed by cities each year from 1991 to 2003. Over that time period, the greatest amount of contracted land was annexed to cities in 2000 (9,961 acres) and the least in 1992 (863 acres).

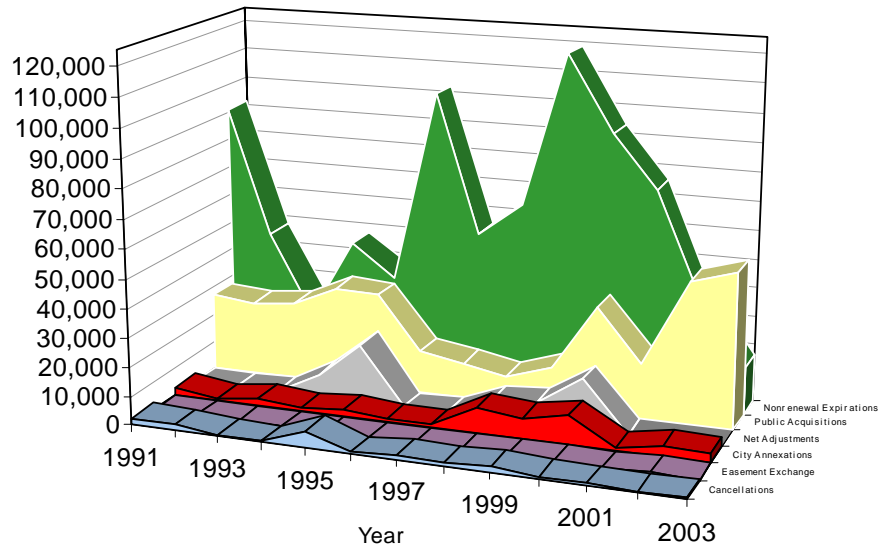
Cancellation: Statewide, an average of 1,301 acres was cancelled annually from 1991 to 2003. Since 1991, the greatest amount of acreage was cancelled in 1995 (5,694 acres) and the least in 1994 (155 acres).

Easement Exchange: This method of contract termination became available in 1998. As of 2003, three Williamson Act easement exchanges have taken place. In those three exchanges, Williamson Act contracts were rescinded on 494 acres in exchange for the placement of agricultural conservation easements on 579 acres.

Cumulative Acres Terminated By Category: 1991-2003 (Acres; Percentage)



Termination Trend Comparison (Acres): 1991-2003



Note: The Department of Conservation's data on net adjustments only reaches back to 1994

Cumulative Nonrenewal Trends

Cumulative nonrenewal acreage refers to the total amount of acreage undergoing the nine-year phase out of contract status at any one time.

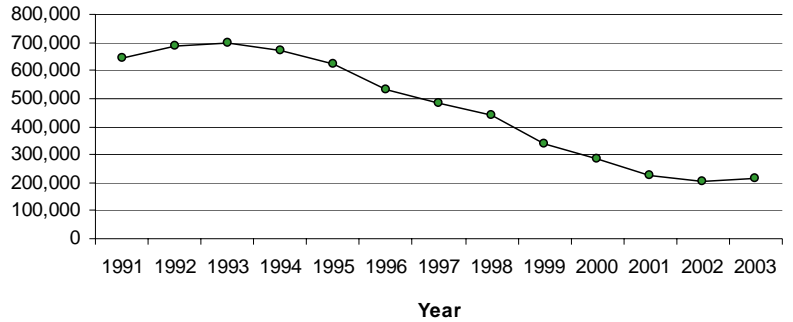
Statewide cumulative nonrenewal acreage peaked at nearly 700,000 acres (record high) in 1993 and then began a steady decline that ended in 2003. In 1993, statewide cumulative nonrenewal acreage made up 4.4 percent of the total statewide enrollment; in 2003 it was 1.3 percent. Controlling for changes to total statewide enrollment, in 1993 there were 22 acres of continuing contracted acres per cumulative nonrenewal acre; in 2003 there were 76 acres.

The middle graphic shows the prime/nonprime composition of the statewide cumulative nonrenewal acreage. Notably, the amount of cumulative nonrenewal acreage in both the prime and nonprime categories has been declining. Research has also shown that the proportion of prime/nonprime acreage among the cumulative nonrenewal acreage is similar to the statewide enrollment proportions. For example, in 2001 prime land represented 36 percent of the total statewide enrollment and 31 percent of the cumulative nonrenewal acreage.

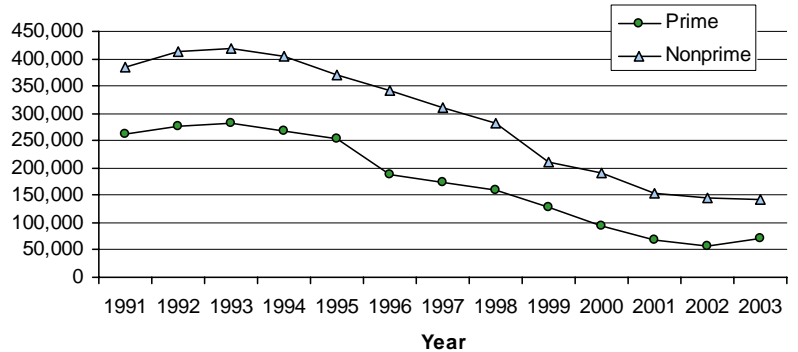
The bottom graphic shows the decline in statewide cumulative nonrenewal acreage from a different perspective. In 1994, statewide nonrenewal expirations surpassed statewide nonrenewal initiations for the first time since 1986. This transition kicked off a 9-year decline in statewide cumulative nonrenewal acreage that ended in 2003.

Cross-Reference: Appendix C (p. 29)

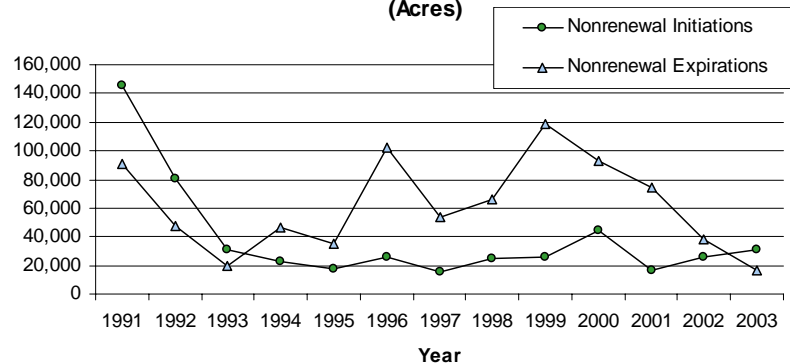
Statewide Cumulative Nonrenewal Acreage: 1991-2003



Statewide Cumulative Nonrenewal Acreage 1991-2003
Prime v. Nonprime



Nonrenewal Initiations v. Nonrenewal Expirations: 1991-2003
(Acres)



Cumulative Nonrenewal Trends

Cumulative nonrenewal acreage refers to the total amount of acreage undergoing the nine-year phase out of contract status at any one time.

In 2002, Orange County easily maintained its top ranking statewide in the percentage of its enrollment that is under the nonrenewal process. In less than 10 years, Orange County could see its Williamson Act program shrink to 4,500 acres. Orange County’s Williamson Act program peaked in popularity in the early 1970s when it had over 77,000 acres under contract.

In 2003, counties in the Foothill & Sierra and South Coast & Desert Region continued to dominate the Top 10 rankings. Both San Bernardino and Placer County added to their cumulative nonrenewal acreage. San Bernardino County’s Williamson Act program, which reported over 22,000 acres in the late 1980s, is down to 6,584 acres (including the 1,487 acres under nonrenewal).

Cross-Reference: Appendix C (p. 29)

Top 10 Counties with the Largest Percentage of Enrollment Under Nonrenewal

2002				2003			
Ranking		County	%	Ranking		County	%
2001	2002			2002	2003		
1	1	Orange	64.60	1	1	Orange	64.54
3	2	San Bernardino	20.94	2	2	San Bernardino	22.59
5	3	Placer	14.23	3	3	Placer	20.74
6	4	Plumas	7.45	4	4	Plumas	7.60
4	5	El Dorado	5.23	5	5	El Dorado	4.76
8	6	Riverside	3.83	13	6	San Joaquin	4.61
10	7	Amador	3.80	8	7	Sacramento	3.58
9	8	Sacramento	3.39	9	8	Contra Costa	3.28
21	9	Contra Costa	2.78	6	9	Riverside	2.91
11	10	Mendocino	2.52	14	10	Santa Clara	2.78

Regional Ranking by Percentage of Enrollment Under Nonrenewal

2002		2003	
Region	%	Region	%
Foothill & Sierra	2.80	Foothill & Sierra	3.17
South Coast & Desert	2.28	South Coast & Desert	2.29
Bay & Central Coast	1.34	Bay & Central Coast	1.39
North Coast & Mountain	1.20	San Joaquin Valley	1.18
Sacramento Valley	1.18	North Coast & Mountain	1.10
San Joaquin Valley	0.98	Sacramento Valley	1.02

Farmland Security Zones

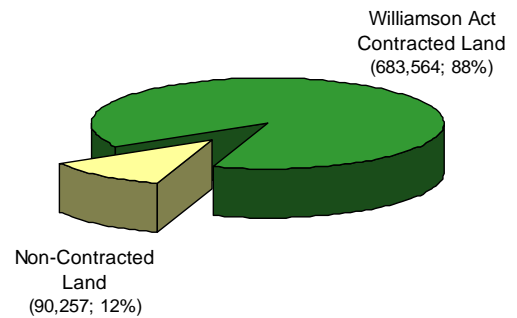
In August 1998, the farmland security zone (FSZ) provisions were enacted with the passage of Senate Bill 1182. The FSZ provisions offer landowners greater property tax reductions in return for a contractual commitment of at least 20 years.

As enacted in August of 1998, the FSZ provisions allowed for the creation of a FSZ contract only through the rescission of an existing Williamson Act contract. That requirement was changed on January 1, 2000, thus allowing non-contracted land to go straight into an FSZ contract. The graphic at right shows that most (88 percent) of the existing FSZ acreage was created through the rescission of existing Williamson Act contracts.

As of January 1, 2003, 19 counties had a percentage of their Williamson Act land under FSZ contract. This percentage ranged from 38 percent (Kings) to 0.02 percent (Santa Barbara), with an average of 8 percent. Regionally, only the Sacramento Valley and San Joaquin Valley have greater than 2 percent of their total amount of contracted land under FSZ contract: 5.7 percent and 7.4 percent, respectively.

The FSZ program has grown by an average of 152,559 acres each year since its enactment. Since 1999 the FSZ program added the most acreage in 2000 (229,378 acres) and the least in 2003 (54,454 acres).

The Origin of Existing Farmland Security Zone Contracts (Acres; Percentage)

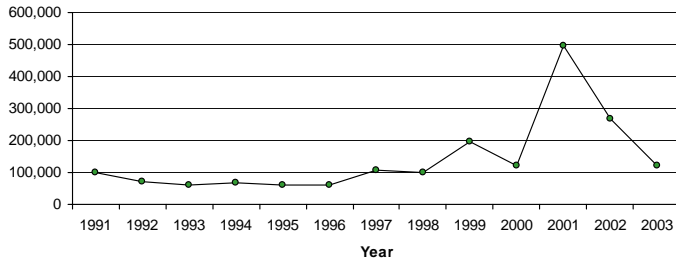


Farmland Security Zone Acreage and Percentage of Total Enrollment By County*

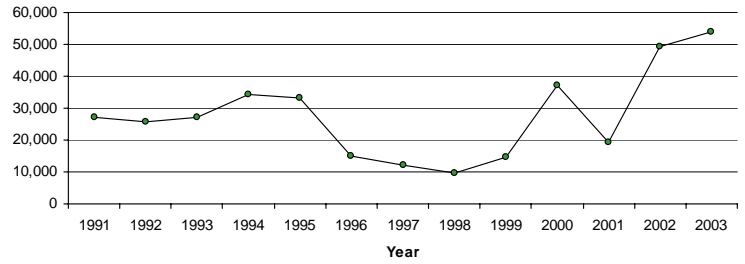
County	FSZ Acres	Percent of Total
Kings	259,021	37.93%
Glenn	83,227	20.34%
Colusa	55,612	17.75%
Marin	16,039	15.81%
San Joaquin	60,130	11.10%
Madera	53,603	9.69%
Sierra	3,493	8.62%
Kern	139,638	8.15%
Lassen	18,883	6.13%
Plumas	4,595	5.54%
Monterey	29,177	3.82%
Ventura	2,295	1.79%
Tehama	11,356	1.42%
Fresno	15,939	1.02%
Tulare	9,039	0.81%
Placer	307	0.69%
Santa Cruz	123	0.63%
El Dorado	185	0.50%
Santa Barbara	133	0.02%

*As of January 1, 2003

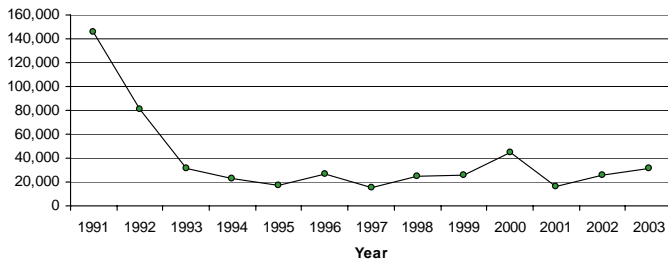
New Enrollments (Acres): 1991-2003



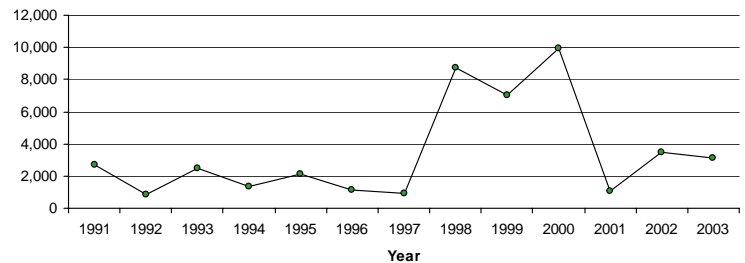
Public Acquisitions (Acres): 1991-2003



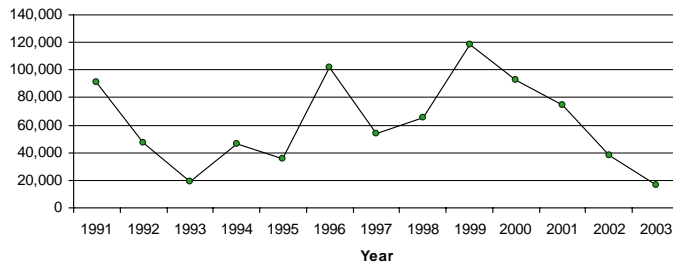
Nonrenewal Initiations (Acres): 1991-2003



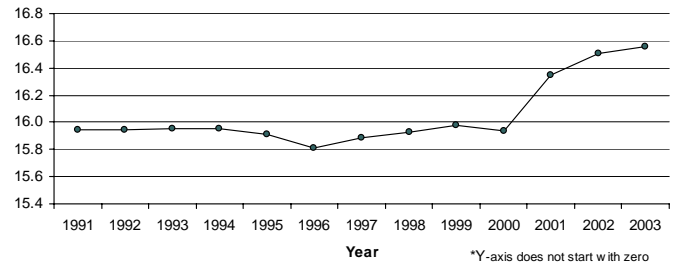
City Annexations (Acres): 1991-2003



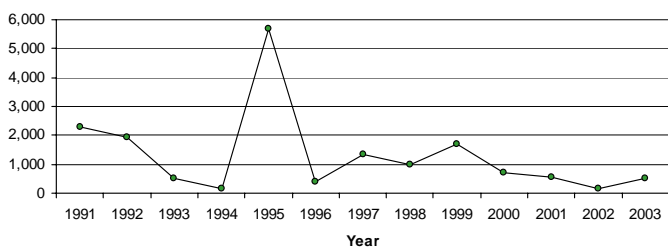
Nonrenewal Expirations (Acres): 1991-2003



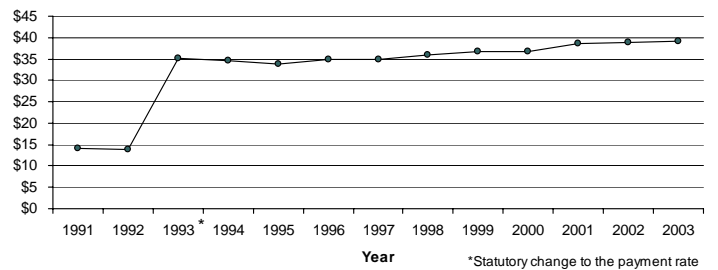
Total Reported Acreage (Millions): 1991-2003*



Cancellations (Acres): 1991-2003



Open Space Subvention Act Payments (Millions): 1991-2003



III. OPEN SPACE SUBVENTION ACT PAYMENTS

Open Space Subvention Act

The Open Space Subvention Act provides for the partial replacement of local property tax revenues foregone as a result of participation in the Williamson Act and other enforceable restriction programs.

Since the first Open Space Subvention payments made in fiscal year 1972-73, the State has distributed over \$600 million to counties and cities in support of the Williamson Act program. The \$39,242,00 claimed in subventions for 2003 is the largest since the program's inception. Also, the 16,063,648 acres reported as eligible for subvention payment in 2003 is the largest amount of eligible acreage reported since 1981.

While prime farmlands constitute one-third of statewide enrollment, they accounted for roughly 73 percent of total subventions in 2000 and 2001. Other enforceably restricted lands, including Open Space Easement lands that qualify for subvention payments, accounted for 0.1 percent of total subventions in 2000 and 2001.

Counties administered 99.9 percent of the Williamson Act acres reported for State subvention payments in 2002 and 2003. Further, 99.9 percent of the State subvention payments in 2002 and 2003 went to counties. In 2003, seven cities claimed a total of \$5,554 in subventions for 4,671 acres of contracted land.

Not all Williamson Act contracted land is eligible for subvention payment. For example, local governments generally cannot claim subventions on contracted land that is under nonrenewal or valued for property tax purposes at Proposition 13 levels. In 2000 and 2001, approximately 3 percent of the statewide enrollment was not eligible for subvention payment.

In terms of "Total Agricultural Value", the San Joaquin Valley is California's most important region. In 1999, six of California's top ten agricultural counties were San Joaquin Valley counties. The San Joaquin Valley contains about 44 percent of the total statewide Williamson Act enrollment, and accounts for 61 percent of total subventions. The already high concentration of contracted land in the San Joaquin Valley was bolstered in 2001 when Merced County began offering Williamson Act contracts to its agricultural landowners.

Cross-Reference: Appendix C (p. 50, 51)

Top 10 Counties with the Largest Subvention Entitlement

2002				2003			
Ranking		County	Acres	Ranking		County	Dollars
2001	2002			2002	2003		
1	1	Fresno	5,625,915	1	1	Fresno	5,716,657
2	2	Kern	5,002,271	2	2	Kern	4,960,885
3	3	Tulare	3,535,166	3	3	Tulare	3,525,513
4	4	Kings	2,975,814	4	4	Kings	2,824,621
5	5	San Joaquin	2,041,921	5	5	San Joaquin	1,983,260
6	6	Stanislaus	1,737,231	6	6	Stanislaus	1,691,748
8	7	Madera	1,462,013	7	7	Madera	1,482,950
9	8	Merced	1,356,215	8	8	Merced	1,376,478
7	9	Yolo	1,350,086	9	9	Yolo	1,296,449
10	10	San Luis Obispo	1,125,138	10	10	San Luis Obispo	1,119,345

Open Space Subvention Act Payment Claims By Region (Dollars)*

Region	Land Conservation Act		Farmland Security Zone				Other Eligible Open Space	Total
	Prime	Nonprime	Urban		Non-Urban			
			Prime	Nonprime	Prime	Nonprime		
Bay & Central Coast	1,186,340	2,798,437	30,866	92,497	38,002	1,596	18,215	4,165,953
Foothill & Sierra	284,364	678,439	0	0	5,825	3,616	966	973,209
North Coast & Mountain	933,574	1,411,647	4,360	0	2,170	119	392	2,352,262
Sacramento Valley	3,724,460	1,695,484	133,920	32,120	379,793	3,925	61	5,969,762
San Joaquin Valley	18,553,226	2,843,834	575,018	4,695	1,719,891	15,905	686	23,713,255
South Coast & Desert	898,048	638,533	8,610	827	916	44	40,052	1,587,031
Totals	25,580,012	10,066,374	752,774	130,139	2,146,597	25,204	60,371	38,761,471

*Year 2001. Actual payment totals may differ slightly due to audit adjustments and/or enforcement actions

IV. SURVEY OF WILLIAMSON ACT CONTRACTS WITHIN CITIES

Survey Background

Cities have been administering Williamson Act contracts since the early years of the program. In fiscal year 1972-73, six cities claimed subventions payments on 27,061 acres of contracted land. Seventeen years later, twenty cities claimed subvention payments on 26,352 acres of contracted land. Currently, the combined enrollment of all the participating cities surpasses that of a few individual counties. Although the enrollment statistics for cities is modest compared to the county statistics, they are valuable nonetheless. Unfortunately, the Department's enrollment data for participating cities is not as complete as the county enrollment data. Cities that choose to not claim subventions on their contracted land are not required to submit their Williamson Act enrollment statistics to the Department. For this reason, the Department's data on city implementation of the Williamson Act is limited.

In the fiscal year 2002-03 subvention application, the Department of Conservation included a survey regarding Williamson Act participation among cities. In most cases county staff, on behalf of the participating cities in that county, completed the survey. The following seven counties did not respond to the survey: Contra Costa, Mono, Napa, Placer, Plumas, San Diego, and Tehama.

Survey Results

Of the 44 county responses, only 10 reported having cities that administer Williamson Act contracts. These 10 counties are listed at right. At least 30 cities in California contain contracted land within their jurisdiction. These 30 cities administer over 12,211 acres of contracted land, only 7 percent of which is under nonrenewal. The prime/nonprime percentage of the 12,211 acres is 45 percent prime and 55 percent nonprime.

The 10 counties that reported having Williamson Act participating cities were asked two additional survey questions. First, they were asked if they combined city contracted acreage in their own enrollment totals. Second, if they, pursuant to Section 14110.1 of the California Code of Regulations, claimed subventions on any city contracted land. Only Humboldt County combined city-contracted acreage with their own enrollment totals and claimed subventions on that city contracted land.

Williamson Act Cities (by county) January 1, 2002

Alameda County

Newark (2,789 acres), Fremont (3,313 acres), Livermore (939 acres), Pleasanton (30 acres), and Hayward (384 acres).

Humboldt County

Arcata (12 acres)

Kern County

Data not yet available

Riverside County

Blythe (760 acres), Coachella (375 acres), Corona (451 acres), Hemet (147 acres), Indio (19 acres), Perris (717 acres), Riverside (37 acres), and San Jacinto (1,262 acres)

*San Bernardino County**

Ontario, Chino, Redlands, Yucaipa, Hesperia, and Victorville

*City acreage data not available

San Luis Obispo County

Arroyo Grande (36 acres), Paso Robles (117 acres), and Atascadero (9 acres)

Santa Clara

Data not yet available

Stanislaus County

Modesto (62 acres), Hughson (35 acres), Patterson (17 acres), Riverbank (306 acres), and Oakdale (40 acres)

Tulare County

Visalia (324 acres)

Ventura County

Camarillo (77 acres)

IV. SURVEY OF PROGRAM ADMINISTRATION

Survey Background

Fundamentally, the Williamson Act is a State policy administered by local governments. Local governments are not mandated to administer the Act, but those that do have some latitude to tailor the program to suit local goals and objectives. That latitude includes being more restrictive in contract terms, payments and fees, than what is required by Williamson Act (§51240). Consequently, the Williamson Act programs found across the state often have subtle differences, reflecting the diversity among participating local governments.

In the fiscal year 2003-04 subvention application, the Department of Conservation included a county survey aimed at understanding the subtle programmatic differences across the state. The following eleven counties did not respond to the survey: Contra Costa, Lassen, Los Angeles, Mono, Orange, Sacramento, San Mateo, Santa Clara, Santa Cruz, Sierra, and Tulare.

Survey Results

Minimum Parcel Sizes

The statutory minimum for parcel sizes is 10 acres for Prime land and 40 acres for nonprime land (§51222). Many counties have minimums for prime and nonprime land that differ from the statutory minimums. Examples of nonprime minimum parcel size variation include Butte County that has a 160-acre nonprime minimum parcel size, while Mariposa, San Luis Obispo, and Santa Barbara County all have 100-acre minimum nonprime parcel size. Monterey County has a 100-acre minimum parcel size requirement for both nonprime and prime land.

Minimum parcel sizes for Prime land varied from 5-acres in Santa Barbara and San Bernardino County, to 100 acres in Monterey and Shasta County. Local governments may allow parcels smaller than the statutory minimum for Williamson Act contracts if the Board/Counsel finds that such parcels are agriculturally viable due to unique local conditions.

Minimum Contract Term

The statutory minimum contract term is 10 years for standard Williamson Act contracts and 20 years for FSZ contracts (§51244; §51296.1). Two counties reported longer contract terms for standard contracts. Monterey and Mariposa County both have 20-year contract terms for their standard Williamson Act contracts.

Survey Results (Continued)

Minimum Cancellation Fee Penalty

The statutory minimum for Williamson Act and FSZ cancellation fee penalty is 12.5 percent and 25 percent of the unrestricted fair market value of the subject land, respectively (§51283; §51297). Three counties reported cancellation fee penalties greater than statute minimum. Butte, Humboldt, and Merced County have all set their cancellation fee penalty for standard Williamson Act contracts at 25 percent of the unrestricted fair market value of the land.

Administrative Processing Fees

The survey asked counties to report their fees for the following administrative transactions: new enrollment, nonrenewal initiation, nonrenewal withdrawal, and cancellation petition. Comparing fees was complicated by the fact that a number of counties use formulas or charge actual administrative costs.

Fees for new enrollments of standard Williamson Act contracts range from \$5,400 (San Bernardino County) to \$100 (Madera County). The average new enrollment fee for a Williamson Act contract is around \$868. Fees for new enrollments of FSZ contracts range from \$1,845 (Humboldt County) to \$100 (Colusa and Madera County). The average new enrollment fee for a FSZ contract is about \$642.

Fees for nonrenewal initiation ranged from \$0 to \$2,015 (Humboldt County). The average nonrenewal initiation fee is about \$240.

Fees for nonrenewal withdrawal ranged from \$0 to \$1,276 (Santa Barbara County). The average nonrenewal withdrawal fee is about \$150.

Cancellation petition fees varied widely, ranging from \$0 to \$5,400 (San Bernardino County). The average cancellation petition fee is about \$960.

Williamson Act Advisory Committee

Counties and cities may appoint Williamson Act committees to advise the board or council on administration of agricultural preserves and on other matters relating to contracts (§51239). In the survey counties were asked if they had a Williamson Act advisory committee. Of the forty counties that responded to the question, twenty-two reported having a Williamson Act advisory committee.

V. COMPLIANCE AUDITS

In 1988, Williamson Act and Open Space Subvention Act program audits were initiated for participating Williamson Act counties and cities. At that time, the Department of Conservation contracted with the Department of General Services to conduct audits of several counties. As a result of those initial audits, approximately \$550,000 in subventions was recaptured for payments made on land not eligible for subventions and for cancellation fees paid to counties but not forwarded to the State. In fiscal year 1996-97, the Department began an annual Williamson Act/Open Space Subvention Act compliance audit program through contracts with the Department of Finance. From fiscal year 1996-97 to present, the State has invested \$450,000 to conduct the annual audits. This investment has resulted in a return to the General Fund of \$1,179,163 from the recapture of subvention overpayments and unpaid contract cancellation fees.

Claiming subvention on land not eligible for payment is the most frequent cause of subvention overpayments. This includes land starting through the contract nonrenewal process, and land valued lower under Proposition 13 valuation for regular Williamson Act contracts. Another problem area is when cancellation fees are collected by local governments and not transmitted within the statutorily required timeframe to the State Controller's Office.

Besides the subventions recovered by the audits, a major benefit is the correction of procedures for cities and counties that may not have followed the Williamson Act requirements and restrictions. The audit findings provide reassurance to both local governments and the State that the provisions of statute are being followed. Since 1972, over \$600 million in State subventions have been certified to local governments to provide replacement revenues for the loss in tax revenue and administrative costs resulting from participation in the Williamson Act program. The audit program provides a valuable check to ensure that the program is administered according to statute at the local level, and to carry out the State's fiduciary responsibility for a major investment by the taxpayers of California.

- **Fiscal year 1996-97** audits of Kern, San Joaquin and Tulare Counties recaptured \$65,087 in subvention overpayments. The audit also discovered a contract violation that led to the Department's initiation of legal action to remedy the violation. The resolution of the contract enforcement action resulted in a payment of \$100,000 to the California Farmland Conservancy Program Fund, and the money was subsequently used to fund acquisition of perpetual agricultural conservation easements.
- **Fiscal year 1997-98** audits of Fresno, Kings, Stanislaus and Madera Counties resulted in the recapture of \$165,607 in subvention overpayments.
- **Fiscal year 1998-99** audits of San Luis Obispo, Riverside, Monterey and Tehama Counties resulted in the recapture of \$958,497 in subvention overpayments. Of this amount, \$911,298 was for cancellation fees collected by Riverside County but not forwarded to the State Controller's Office.
- **Fiscal year 1999-00** audits of Colusa, San Diego and Yolo Counties resulted in the recapture of \$150,406 in subvention overpayments.
- **Fiscal year 2000-01** audits of Contra Costa, Glenn, San Benito, Santa Barbara and Tuolumne Counties resulted in the recapture of \$5,000 in overpaid subventions.
- **Fiscal year 2001-02** audits of Marin, Mendocino, Placer, San Bernardino and Santa Clara Counties resulted in the recapture of \$57,980 in subvention overpayments.

APPENDIX A. SIGNIFICANT LEGISLATION

Summary of Significant Legislation Effective January 1, 2002

Senate Bill 497 (Sher, Chapter 873, Statutes of 2001)

- Makes the Subdivision Map Act inapplicable to a lot line adjustment between 4 or fewer existing adjoining parcels, where the land taken from one parcel is added to an adjoining parcel, and where a greater number of parcels than originally existed is not thereby created, if the lot line adjustment is approved by the local agency or advisory agency.
- Requires a local agency or advisory agency to limit its review and approval to a determination of whether or not the parcels resulting from the lot line adjustment will conform to the local general plan, any applicable coastal plan, and zoning and building ordinances, as specified.
- Eliminates the provision for issuance of a certificate of compliance and would require the issuance of a conditional certificate of compliance in those instances.

Summary of Significant Legislation Effective January 1, 2003

Assembly Bill 137 (Reyes, Chapter 188, Statutes of 2002)

- Requires a local agency formation commission (LAFCO) to address concerns raised by the Department of Conservation in any hearing that considers a proposed annexation and a city's decision to not succeed to a contract. Specifically, LAFCO must find that substantial evidence exists as specified in this section to allow the city not to succeed to a contract.
- Provides that a city may exercise its option to not succeed to a contract provided; 1) the contract was entered into between January 1, 1968 and December 31, 1968, 2) the land being annexed was within one mile of the city's boundary when the contract was executed and 3) LAFCO determined that the city may exercise its option to not succeed to the contract prior to January 1, 2002.

Senate Bill 1515 (Machado, Chapter 174, Statutes of 2002)

- Provides that enforceably restricted lands may not be included or annexed to community facilities districts that provide non-agricultural services unless the landowner consents to the inclusion or annexation. Additionally, landowners that consent to inclusion or annexation to a community facilities district are prohibited from terminating the affected easement or canceling the affected contract until the Mello-Roos liens are released.

Senate Bill 1864 (Costa, Chapter 616, Statutes of 2002)

- Extends the sunset date of the Government Code §51257 lot line adjustment provisions to January 1, 2004.

Senate Bill 2370 (Thomson, Chapter 614, Statutes of 2002)

- Offers protection to agricultural lands by prohibiting a LAFCO from approving a change to a city's sphere of influence if it would result in annexation of land subject to a Williamson Act contract, unless it finds specified circumstances exist.
- Prohibits a LAFCO from approving a change to a local government or a special district if the change would result in annexation of lands protected under a Farmland Security Zone contract or a Williamson Act contract, unless the facilities or services provided benefit the land uses allowed under contract and the landowner consents to the change of the sphere of influence. A LAFCO may approve such change of organization only if it can make specified findings.

APPENDIX B. ABOUT THE WILLIAMSON ACT

The California Land Conservation Act, better known as the Williamson Act, has been the state's premier agricultural land protection program since its enactment in 1965. Over 16 million of the state's 30 million acres of farm and ranch land are currently protected under the Williamson Act. The Williamson Act statute is located in the California Government Code beginning with Section 51200.

Following World War II, California experienced tremendous population and economic growth. This growth, in tandem with the State's property tax system, led to increased pressures to convert agricultural land to urban use. Rapidly escalating property taxes often presented a prohibitive burden for farmers who wanted to maintain their agricultural operations. In response, the California Legislature passed the Williamson Act in 1965 to preserve agricultural and open space lands by discouraging premature and unnecessary conversion to urban uses. The Williamson Act was then, and remains today, a highly innovative policy that tackles the problem of agricultural land protection through an interrelated set of property tax, land use, and conservation measures.

Fundamentally, the Williamson Act is a State policy administered by local governments. Local governments are not mandated to administer the Act, but those that do have some latitude to tailor the program to suit local goals and objectives. The State's support of the program is strong and enduring – expressed in the language of the Act, in the authority granted to local governments, in the State subventions, and in the recent enhancements to the Act that further promote farmland and open space protection.

A three-way relationship between private landowners, local governments, and the State is central to the Williamson Act. Local governments and landowners voluntarily enter into a contract in which each accepts certain costs in return for other benefits. The landowner forgoes the possibility of development, or converting his or her property into nonagricultural or non-open space use during the term of the contract, in return for lower property taxes. The local government foregoes a portion of its property taxes in return for the planning advantages and values implicit in retaining land in agriculture or open space. The State is also a key player in the program. The State supports local governments and landowners in the form of technical and implementation assistance, interpretation of the Act, subventions to local governments, research of issues and policies, contract enforcement, and preparation of the Williamson Act Status Report.

Williamson Act contracts have an initial term of ten years, with renewal occurring automatically each year (Local governments can establish initial contract terms for longer periods of time). The contracts run with the land and are binding on all successors in interest of the landowner. Only land located within an agricultural preserve is eligible for a Williamson Act contract. An agricultural preserve defines the boundary of an area within which a city or county will enter into contracts with landowners. The boundary is designated by resolution of the board of supervisors (board) or city council (council) having jurisdiction. Preserves are regulated by rules and restrictions designated in the resolution to ensure that the land within the preserve is maintained for agricultural or open space use. The rules of each agricultural preserve specify the uses allowed. Generally, any commercial agricultural use will be permitted within any agricultural preserve. In addition, local governments may identify compatible uses permitted with a use permit. Landowners interested in enrolling land in a contract should contact their local planning department for application forms and instructions.

In August of 1998, Senate Bill 1182 established the Farmland Security Zone (FSZ) provisions of the Williamson Act. An FSZ is an area created within an agricultural preserve by a board upon request by a landowner or group of landowners. FSZ contracts offer landowners greater property tax reduction in return for an initial contract term of twenty years, with renewal occurring automatically each year. Land restricted by an FSZ contract is valued for property assessment purposes at 65 percent of its Williamson Act valuation, or 65 percent of its Proposition 13 valuation, whichever is lower. New special taxes for urban-related services must be levied at an unspecified reduced rate unless the tax directly benefits the land or living improvements. Cities and special districts that provide non-agricultural services are generally prohibited from annexing land enrolled under an FSZ contract. Similarly, school districts are prohibited from taking FSZ lands for school facilities. The FSZ provisions of the Williamson Act begin at section 51296 of the California Government Code.

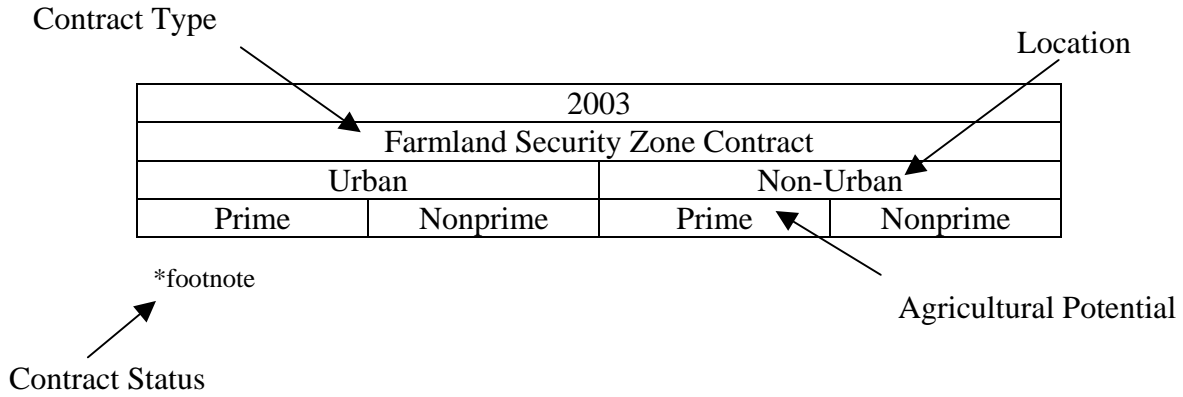
APPENDIX C. DATA TABLES

Data Notes

The following charts were omitted since no acreage was reported: Nonrenewals Withdrawn (FSZ, 2002/2003)

Explanation of Enrollment Categories

The Status Report shows changes to over seventeen categories of enrollment. These enrollment categories may be described by a combination of four factors: contract type, contract status, location, and agricultural potential.



Contract Type

Contract type refers to the nature of the restriction covering the land. The contract types are:

- Land Conservation Act Contract
- Farmland Security Zone Contract
- Agricultural Conservation Easement
- Other Enforceable Restriction

Contract Status

Contract status indicates whether the contract is under nonrenewal. If so, then its contract status will be “Nonrenewal”; otherwise, its status will be “Continuing”.

- Nonrenewal
- Continuing

Location

This factor is only relevant to FSZ enrollment for subvention payment purposes. FSZ contracted land that is within a city’s sphere of influence, or within three miles of the exterior boundaries of a city’s sphere of influence, is “Urban”. All other FSZ contracted land is “Non-Urban”.

- Urban
- Non-Urban

Agricultural Potential

Agricultural potential refers to the actual or potential agricultural productivity of the land being restricted. Contracted land that meets the Williamson Act definition of prime agricultural land is “Prime”. All other land is “Nonprime”.

- Prime
- Nonprime

Total Reported Enrollment (Acres)

Participating Local Jurisdictions	2002									
	Land Conservation Act*		Farmland Security Zone*				Agricultural Conservation Easement		Other Enforceable Restriction	TOTAL
	Prime	Nonprime	Urban		Non-Urban		Prime	Nonprime		
			Prime	Nonprime	Prime	Nonprime				
Counties										
Alameda	9,956	125,172	-	-	-	-	-	-	-	135,128
Amador	6,045	89,379	-	-	-	-	-	-	-	95,424
Butte	110,652	102,234	-	-	-	-	-	-	-	212,886
Calaveras	16,577	117,059	-	-	-	-	-	-	-	133,636
Colusa	62,092	195,314	12,823	594	36,069	2,324	-	-	-	309,215
Contra Costa	9,605	39,241	-	-	-	-	-	-	-	48,846
El Dorado	2,028	34,381	-	-	5	180	-	-	-	36,595
Fresno	1,067,064	485,467	-	-	12,576	3,363	-	-	-	1,568,470
Glenn	59,215	266,839	9,573	1,260	62,268	2,287	-	-	-	401,443
Humboldt	4,777	187,557	-	-	-	-	-	-	-	192,333
Imperial	96,215	2,594	-	-	-	-	-	-	-	98,809
Kern	691,926	894,615	23,076	-	106,351	-	-	-	-	1,715,967
Kings	312,946	117,682	28,194	227	238,398	4,661	-	-	-	702,109
Lake	5,889	42,564	-	-	-	-	-	-	-	48,453
Lassen	39,879	261,434	545	-	434	119	-	-	-	302,410
Los Angeles	-	-	-	-	-	-	-	-	40,052	40,052
Madera	209,906	292,315	11,604	377	35,322	1,980	-	-	-	551,504
Marin	14,688	72,319	-	13,279	-	-	-	-	-	100,286
Mariposa	-	202,552	-	-	-	-	-	-	-	202,552
Mendocino	33,573	448,806	-	-	-	-	-	-	-	482,379
Merced	236,708	176,570	-	-	-	-	-	-	-	413,278
Modoc	-	-	-	-	-	-	-	-	-	-
Mono	10,165	-	-	-	-	-	-	-	-	10,165
Monterey	63,999	675,299	5,992	484	9,040	1,586	-	-	-	756,401
Napa	17,915	50,674	-	-	-	-	-	-	-	68,589
Nevada	4,545	470	-	-	-	-	-	-	-	5,015
Orange	741	11,801	-	-	-	-	-	-	-	12,542
Placer	16,178	28,327	-	-	-	-	-	-	-	44,505
Plumas	5,576	74,499	-	-	1,160	3,435	-	-	-	84,670
Riverside	54,906	6,483	-	-	-	-	255	214	-	61,858
Sacramento	87,650	88,634	-	-	-	-	-	-	-	176,284
San Benito	52,081	530,210	-	-	-	-	-	-	-	582,291
San Bernardino	1,521	5,064	-	-	-	-	-	-	-	6,584
San Diego	5,294	67,760	-	-	-	-	-	-	-	73,054
San Joaquin	335,965	146,649	13,390	-	34,187	10,734	-	-	-	540,924
San Luis Obispo	85,177	728,245	-	-	-	-	-	-	-	813,422
San Mateo	2,978	43,892	-	-	-	-	-	-	-	46,870
Santa Barbara	67,045	481,668	-	-	133	-	-	-	-	548,846
Santa Clara	11,450	319,171	-	-	-	-	-	-	-	330,621
Santa Cruz	3,041	16,309	82	32	-	10	-	-	-	19,474
Shasta	15,952	154,853	-	-	-	-	-	-	-	170,805
Sierra	1,938	36,874	-	799	-	902	-	-	-	40,513
Siskiyou	90,625	317,981	-	-	-	-	-	-	-	408,606
Solano	118,313	143,368	-	-	-	-	-	-	-	261,680
Sonoma	30,151	254,866	-	-	-	-	-	-	18,215	303,232
Stanislaus	285,996	405,833	-	-	-	-	-	-	-	691,829
Sutter	31,297	7,350	-	-	-	-	-	-	-	38,647
Tehama	50,996	745,101	2,655	2,467	1,190	1,128	-	-	-	803,536
Trinity	-	22,031	-	-	-	-	-	-	-	22,031
Tulare	593,597	511,536	9,001	-	-	-	-	-	686	1,114,819
Tuolumne	-	118,808	-	-	-	-	-	-	-	118,808
Ventura	45,592	79,957	1,170	279	377	219	-	-	-	127,595
Yolo	244,578	178,410	-	-	-	-	127	4	-	423,119
Cities										
Camarillo	75	1	-	-	-	-	-	-	-	76
Hayward	-	384	-	-	-	-	-	-	-	384
Menlo Park	-	940	-	-	-	-	-	-	-	940
Newark	-	2,805	-	-	-	-	-	-	-	2,805
Palo Alto	149	317	-	-	-	-	-	-	-	466
Perris	741	-	-	-	-	-	-	-	-	741
RedLands	199	-	-	-	-	-	-	-	-	199
Totals										
Counties	5,325,002	10,406,213	118,106	19,798	537,511	32,928	382	218	58,953	16,499,111
Cities	1,163	4,447	-	-	-	-	-	-	-	5,610
Grand Totals	5,326,165	10,410,660	118,106	19,798	537,511	32,928	382	218	58,953	16,504,721

*Totals include both continuing term and nonrenewal contracts.

Total Reported Enrollment (Acres)

Participating Local Jurisdictions	2003									
	Land Conservation Act*		Farmland Security Zone*				Agricultural Conservation Easement		Other Enforceable Restriction	TOTAL
	Prime	Nonprime	Urban		Non-Urban		Prime	Nonprime		
			Prime	Nonprime	Prime	Nonprime				
Alameda	9,968	124,364	-	-	-	-	-	-	-	134,332
Amador	5,428	91,468	-	-	-	-	-	-	-	96,896
Butte	111,269	101,827	-	-	-	-	-	-	-	213,096
Calaveras	16,774	117,220	-	-	-	-	-	-	-	133,994
Colusa	62,232	195,489	13,472	610	39,188	2,342	-	-	-	313,333
Contra Costa	9,603	39,096	-	-	-	-	-	-	-	48,699
El Dorado	2,078	34,488	-	-	5	180	-	-	-	36,752
Fresno	1,054,740	487,158	-	-	12,676	3,263	-	-	-	1,557,837
Glenn	59,034	266,868	9,573	1,260	70,035	2,359	-	-	-	409,129
Humboldt	4,840	187,495	-	-	-	-	-	-	-	192,335
Imperial	107,976	3,273	-	-	-	-	-	-	-	111,249
Kern	674,599	899,567	22,198	-	117,441	-	-	-	-	1,713,804
Kings	306,574	117,246	28,354	227	226,378	4,062	-	-	-	682,841
Lake	5,896	43,876	-	-	-	-	-	-	-	49,772
Lassen	17,209	271,974	435	144	11,591	6,713	-	-	-	308,066
Los Angeles	-	-	-	-	-	-	-	-	40,052	40,052
Madera	209,676	289,378	12,121	382	39,023	2,078	328	-	-	552,984
Marin	1,636	83,791	-	-	290	15,749	-	-	-	101,466
Mariposa	-	203,907	-	-	-	-	-	-	-	203,907
Mendocino	33,608	449,344	-	-	-	-	-	-	-	482,952
Merced	240,515	176,803	-	-	-	-	-	-	-	417,318
Modoc	6,972	23,758	-	-	-	-	-	-	-	30,730
Mono	12,607	-	-	-	-	-	-	-	-	12,607
Monterey	59,669	675,467	6,603	562	15,940	6,072	-	-	-	764,313
Napa	17,800	50,798	-	-	-	-	-	-	-	68,598
Nevada	5,104	470	-	-	-	-	-	-	-	5,574
Orange	741	11,814	-	-	-	-	-	-	-	12,555
Placer	16,165	28,326	-	-	-	307	-	-	-	44,799
Plumas	5,576	72,824	-	-	1,160	3,435	-	-	-	82,996
Riverside	54,148	6,605	-	-	-	-	255	214	-	61,222
Sacramento	87,394	90,396	-	-	-	-	-	-	-	177,790
San Benito	52,153	532,178	-	-	-	-	-	-	-	584,331
San Bernardino	1,521	5,063	-	-	-	-	-	-	-	6,583
San Diego	5,128	67,692	-	-	-	-	-	-	-	72,820
San Joaquin	334,762	146,680	15,026	80	34,291	10,734	-	-	-	541,573
San Luis Obispo	85,872	722,732	-	-	-	-	-	-	-	808,604
San Mateo	3,070	43,988	-	-	-	-	-	-	-	47,058
Santa Barbara	67,384	481,378	-	-	133	-	-	-	-	548,895
Santa Clara	11,396	319,374	-	-	-	-	-	-	-	330,769
Santa Cruz	3,041	16,309	82	32	-	10	-	-	-	19,474
Shasta	15,952	156,867	-	-	-	-	-	-	-	172,819
Sierra	1,938	35,068	-	799	-	2,693	-	-	-	40,498
Siskiyou	90,577	318,549	-	-	-	-	-	-	-	409,126
Solano	117,107	141,893	-	-	-	-	-	-	-	258,999
Sonoma	30,299	255,097	-	-	-	-	-	-	18,215	303,611
Stanislaus	286,957	405,546	-	-	-	-	-	-	-	692,503
Sutter	39,890	11,376	-	-	-	-	-	-	-	51,267
Tehama	51,890	738,922	2,655	2,467	1,190	5,044	-	-	-	802,167
Trinity	-	22,031	-	-	-	-	-	-	-	22,031
Tulare	591,917	511,480	9,039	-	-	-	-	-	686	1,113,122
Tuolumne	-	118,422	-	-	-	-	-	-	-	118,422
Ventura	46,027	80,115	1,394	305	377	219	-	-	-	128,437
Yolo	242,422	177,802	-	-	-	-	127	4	-	420,355
Cities										
Camarillo	75	1	-	-	-	-	-	-	-	76
Hayward	-	384	-	-	-	-	-	-	-	384
Menlo Park	-	940	-	-	-	-	-	-	-	940
Newark	-	2,805	-	-	-	-	-	-	-	2,805
Palo Alto	149	317	-	-	-	-	-	-	-	466
Perris	-	-	-	-	-	-	-	-	-	-
RedLands	-	-	-	-	-	-	-	-	-	-
Totals										
Counties	5,279,133	10,453,651	120,952	6,868	569,717	65,261	709	218	58,953	16,555,461
Cities	224	4,447	-	-	-	-	-	-	-	4,671
Grand Totals	5,279,357	10,458,098	120,952	6,868	569,717	65,261	709	218	58,953	16,560,132

*Totals include both continuing term and nonrenewal contracts.

Farmland Security Zone Transfers (Acres)

Participating Local Jurisdictions	2002									
	Land Conservation Act*		Farmland Security Zone*				Agricultural Conservation Easement		Other Enforceable Restriction	TOTAL
	Prime	Nonprime	Urban		Non-Urban		Prime	Nonprime		
			Prime	Nonprime	Prime	Nonprime				
Counties										
Alameda	-	-	-	-	-	-	-	-	-	-
Amador	-	-	-	-	-	-	-	-	-	-
Butte	-	-	-	-	-	-	-	-	-	-
Calaveras	-	-	-	-	-	-	-	-	-	-
Colusa	(16,671)	(599)	6,646	129	10,025	470	-	-	-	-
Contra Costa	-	-	-	-	-	-	-	-	-	-
El Dorado	-	-	-	-	-	-	-	-	-	-
Fresno	(10,871)	(3,198)	-	-	10,771	3,298	-	-	-	(0)
Glenn	(7,014)	(130)	597	-	6,260	287	-	-	-	0
Humboldt	-	-	-	-	-	-	-	-	-	-
Imperial	-	-	-	-	-	-	-	-	-	-
Kern	(43,988)	-	10,062	-	33,926	-	-	-	-	(0)
Kings	(24,213)	(881)	-	-	24,213	881	-	-	-	0
Lake	-	-	-	-	-	-	-	-	-	-
Lassen	-	-	-	-	-	-	-	-	-	-
Los Angeles	-	-	-	-	-	-	-	-	-	-
Madera	(8,774)	(632)	509	27	8,264	605	-	-	-	-
Marin	-	(2,233)	-	2,233	-	-	-	-	-	-
Mariposa	-	-	-	-	-	-	-	-	-	-
Mendocino	-	-	-	-	-	-	-	-	-	-
Merced	-	-	-	-	-	-	-	-	-	-
Modoc	-	-	-	-	-	-	-	-	-	-
Mono	-	-	-	-	-	-	-	-	-	-
Monterey	(3,510)	-	2,070	-	1,440	-	-	-	-	(0)
Napa	-	-	-	-	-	-	-	-	-	-
Nevada	-	-	-	-	-	-	-	-	-	-
Orange	-	-	-	-	-	-	-	-	-	-
Placer	-	-	-	-	-	-	-	-	-	-
Plumas	-	-	-	-	-	-	-	-	-	-
Riverside	-	-	-	-	-	-	-	-	-	-
Sacramento	-	-	-	-	-	-	-	-	-	-
San Benito	-	-	-	-	-	-	-	-	-	-
San Bernardino	-	-	-	-	-	-	-	-	-	-
San Diego	-	-	-	-	-	-	-	-	-	-
San Joaquin	(2,365)	-	2,154	-	212	-	-	-	-	1
San Luis Obispo	-	-	-	-	-	-	-	-	-	-
San Mateo	-	-	-	-	-	-	-	-	-	-
Santa Barbara	-	-	-	-	-	-	-	-	-	-
Santa Clara	-	-	-	-	-	-	-	-	-	-
Santa Cruz	-	-	-	-	-	-	-	-	-	-
Shasta	-	-	-	-	-	-	-	-	-	-
Sierra	-	(1,701)	-	799	-	902	-	-	-	-
Siskiyou	-	-	-	-	-	-	-	-	-	-
Solano	-	-	-	-	-	-	-	-	-	-
Sonoma	-	-	-	-	-	-	-	-	-	-
Stanislaus	-	-	-	-	-	-	-	-	-	-
Sutter	-	-	-	-	-	-	-	-	-	-
Tehama	(622)	(35)	622	35	-	-	-	-	-	(0)
Trinity	-	-	-	-	-	-	-	-	-	-
Tulare	(401)	-	401	-	-	-	-	-	-	-
Tuolumne	-	-	-	-	-	-	-	-	-	-
Ventura	(301)	(352)	140	201	160	151	-	-	-	0
Yolo	-	-	-	-	-	-	-	-	-	-
Cities										
Camarillo	-	-	-	-	-	-	-	-	-	-
Hayward	-	-	-	-	-	-	-	-	-	-
Menlo Park	-	-	-	-	-	-	-	-	-	-
Newark	-	-	-	-	-	-	-	-	-	-
Palo Alto	-	-	-	-	-	-	-	-	-	-
Perris	-	-	-	-	-	-	-	-	-	-
RedLands	-	-	-	-	-	-	-	-	-	-
Totals										
Counties	(118,730)	(9,761)	23,202	3,424	95,272	6,594	-	-	-	1
Cities	-	-	-	-	-	-	-	-	-	-
Grand Totals	(118,730)	(9,761)	23,202	3,424	95,272	6,594	-	-	-	1

*Totals include both continuing term and nonrenewal contracts.

Farmland Security Zone Transfers (Acres)

Participating Local Jurisdictions	2003									
	Land Conservation Act*		Farmland Security Zone*				Agricultural Conservation Easement		Other Enforceable Restriction	TOTAL
	Prime	Nonprime	Urban		Non-Urban		Prime	Nonprime		
			Prime	Nonprime	Prime	Nonprime				
Counties										
Alameda	-	-	-	-	-	-	-	-	-	-
Amador	-	-	-	-	-	-	-	-	-	-
Butte	-	-	-	-	-	-	-	-	-	-
Calaveras	-	-	-	-	-	-	-	-	-	-
Colusa	(204)	(8)	-	-	204	8	-	-	-	-
Contra Costa	-	-	-	-	-	-	-	-	-	-
El Dorado	-	-	-	-	-	-	-	-	-	-
Fresno	-	-	-	-	-	-	-	-	-	-
Glenn	(446)	(31)	-	-	446	31	-	-	-	(0)
Humboldt	-	-	-	-	-	-	-	-	-	-
Imperial	-	-	-	-	-	-	-	-	-	-
Kern	(8,563)	-	2,820	-	5,743	-	-	-	-	0
Kings	(780)	-	160	-	620	-	-	-	-	0
Lake	-	-	-	-	-	-	-	-	-	-
Lassen	(10,900)	(5,793)	-	-	10,364	6,329	-	-	-	0
Los Angeles	-	-	-	-	-	-	-	-	-	-
Madera	(3,810)	(149)	443	5	3,372	138	-	-	-	(0)
Marin	-	(398)	-	-	-	398	-	-	-	-
Mariposa	-	-	-	-	-	-	-	-	-	-
Mendocino	-	-	-	-	-	-	-	-	-	-
Merced	-	-	-	-	-	-	-	-	-	-
Modoc	-	-	-	-	-	-	-	-	-	-
Mono	-	-	-	-	-	-	-	-	-	-
Monterey	(4,334)	(3,151)	316	43	4,018	3,108	-	-	-	0
Napa	-	-	-	-	-	-	-	-	-	-
Nevada	-	-	-	-	-	-	-	-	-	-
Orange	-	-	-	-	-	-	-	-	-	-
Placer	-	-	-	-	-	-	-	-	-	-
Plumas	-	-	-	-	-	-	-	-	-	-
Riverside	-	-	-	-	-	-	-	-	-	-
Sacramento	-	-	-	-	-	-	-	-	-	-
San Benito	-	-	-	-	-	-	-	-	-	-
San Bernardino	-	-	-	-	-	-	-	-	-	-
San Diego	-	-	-	-	-	-	-	-	-	-
San Joaquin	(1,739)	(80)	1,636	80	103	-	-	-	-	0
San Luis Obispo	-	-	-	-	-	-	-	-	-	-
San Mateo	-	-	-	-	-	-	-	-	-	-
Santa Barbara	-	-	-	-	-	-	-	-	-	-
Santa Clara	-	-	-	-	-	-	-	-	-	-
Santa Cruz	-	-	-	-	-	-	-	-	-	-
Shasta	-	-	-	-	-	-	-	-	-	-
Sierra	-	(1,791)	-	-	-	1,791	-	-	-	-
Siskiyou	-	-	-	-	-	-	-	-	-	-
Solano	-	-	-	-	-	-	-	-	-	-
Sonoma	-	-	-	-	-	-	-	-	-	-
Stanislaus	-	-	-	-	-	-	-	-	-	-
Sutter	-	-	-	-	-	-	-	-	-	-
Tehama	-	(3,916)	-	-	-	3,916	-	-	-	-
Trinity	-	-	-	-	-	-	-	-	-	-
Tulare	-	-	-	-	-	-	-	-	-	-
Tuolumne	-	-	-	-	-	-	-	-	-	-
Ventura	(167)	(10)	168	13	-	-	-	-	-	4
Yolo	-	-	-	-	-	-	-	-	-	-
Cities										
Camarillo	-	-	-	-	-	-	-	-	-	-
Hayward	-	-	-	-	-	-	-	-	-	-
Menlo Park	-	-	-	-	-	-	-	-	-	-
Newark	-	-	-	-	-	-	-	-	-	-
Palo Alto	-	-	-	-	-	-	-	-	-	-
Perris	-	-	-	-	-	-	-	-	-	-
RedLands	-	-	-	-	-	-	-	-	-	-
Totals										
Counties	(30,942)	(15,327)	5,542	140	24,871	15,720	-	-	-	4
Cities	-	-	-	-	-	-	-	-	-	-
Grand Totals	(30,942)	(15,327)	5,542	140	24,871	15,720	-	-	-	4

*Totals include both continuing term and nonrenewal contracts.

Cumulative Nonrenewal Acreage (Land Conservation Act)

Participating Local Jurisdictions	2002			2003		
	Land Conservation Act		TOTAL	Land Conservation Act		TOTAL
	Prime	Nonprime		Prime	Nonprime	
Counties						
Alameda	847	596	1,443	828	179	1,008
Amador	378	3,246	3,624	6	2,519	2,525
Butte	1,549	413	1,961	59	255	314
Calaveras	256	1,176	1,432	188	2,415	2,603
Colusa	-	-	-	632	32	664
Contra Costa	39	1,319	1,358	178	1,419	1,597
El Dorado	14	1,900	1,914	4	1,744	1,748
Fresno	3,320	1,025	4,344	2,942	1,095	4,037
Glenn	301	606	907	301	606	907
Humboldt	-	-	-	-	184	184
Imperial	-	-	-	-	-	-
Kern	10,646	15,105	25,750	12,354	14,689	27,043
Kings	5,477	986	6,463	4,072	986	5,058
Lake	87	784	871	87	784	871
Lassen	-	407	407	-	407	407
Los Angeles	-	-	-	-	-	-
Madera	2,123	4,736	6,859	2,179	3,261	5,440
Marin	310	1,261	1,571	39	573	611
Mariposa	-	134	134	-	134	134
Mendocino	120	12,028	12,148	120	11,978	12,098
Merced	-	-	-	-	-	-
Modoc	-	-	-	-	-	-
Mono	-	-	-	-	-	-
Monterey	1,942	9,180	11,123	1,942	9,200	11,142
Napa	327	159	485	722	500	1,222
Nevada	-	-	-	-	-	-
Orange	274	7,829	8,103	274	7,829	8,103
Placer	1,811	4,522	6,333	2,228	7,063	9,290
Plumas	6	6,301	6,307	6	6,301	6,307
Riverside	1,676	694	2,371	1,125	655	1,780
Sacramento	162	5,813	5,975	247	6,114	6,361
San Benito	710	5,591	6,301	655	4,945	5,600
San Bernardino	540	840	1,379	647	840	1,487
San Diego	345	151	496	179	64	243
San Joaquin	8,149	3,485	11,634	21,718	3,223	24,941
San Luis Obispo	1,624	10,954	12,579	1,519	10,817	12,336
San Mateo	-	15	15	283	15	298
Santa Barbara	851	4,759	5,610	1,228	5,181	6,409
Santa Clara	753	5,429	6,182	752	8,428	9,180
Santa Cruz	61	179	240	61	179	240
Shasta	20	4,130	4,150	-	3,691	3,691
Sierra	-	948	948	-	948	948
Siskiyou	909	1,096	2,005	571	569	1,140
Solano	885	3,057	3,943	186	1,444	1,630
Sonoma	147	1,409	1,556	147	1,236	1,382
Stanislaus	2,548	5,583	8,131	4,585	6,205	10,789
Sutter	32	-	32	32	-	32
Tehama	808	9,203	10,010	788	7,823	8,611
Trinity	-	-	-	-	-	-
Tulare	3,085	815	3,900	3,448	370	3,819
Tuolumne	-	661	661	-	689	689
Ventura	440	1,495	1,935	540	1,370	1,910
Yolo	3,769	4,055	7,824	3,840	4,086	7,925
Cities						
Camarillo	-	-	-	-	-	-
Hayward	-	-	-	-	-	-
Menlo Park	-	-	-	-	-	-
Newark	-	-	-	-	-	-
Palo Alto	-	13	13	-	13	13
Perris	153	-	153	-	-	-
RedLands	37	-	37	-	-	-
Totals						
Counties	57,339	144,074	201,413	71,713	143,039	214,752
Cities	190	13	203	-	13	13
Grand Totals	57,529	144,087	201,616	71,713	143,053	214,766

Cumulative Nonrenewal Acreage (Farmland Security Zone)

Participating Local Jurisdictions	2002								TOTAL
	Farmland Security Zone Contracts								
	First 10-years				Last 10-years				
	Urban		Non-Urban		Urban		Non-Urban		
	Prime	Nonprime	Prime	Nonprime	Prime	Nonprime	Prime	Nonprime	
Counties									
Alameda	-	-	-	-	-	-	-	-	-
Amador	-	-	-	-	-	-	-	-	-
Butte	-	-	-	-	-	-	-	-	-
Calaveras	-	-	-	-	-	-	-	-	-
Colusa	-	-	-	-	-	-	-	-	-
Contra Costa	-	-	-	-	-	-	-	-	-
El Dorado	-	-	-	-	-	-	-	-	-
Fresno	-	-	-	-	-	-	-	-	-
Glenn	-	-	-	-	-	-	-	-	-
Humboldt	-	-	-	-	-	-	-	-	-
Imperial	-	-	-	-	-	-	-	-	-
Kern	-	-	-	-	-	-	-	-	-
Kings	-	-	64	-	-	-	-	-	64
Lake	-	-	-	-	-	-	-	-	-
Lassen	-	-	-	-	-	-	-	-	-
Los Angeles	-	-	-	-	-	-	-	-	-
Madera	-	-	-	-	-	-	-	-	-
Marin	-	-	-	-	-	-	-	-	-
Mariposa	-	-	-	-	-	-	-	-	-
Mendocino	-	-	-	-	-	-	-	-	-
Merced	-	-	-	-	-	-	-	-	-
Modoc	-	-	-	-	-	-	-	-	-
Mono	-	-	-	-	-	-	-	-	-
Monterey	-	-	-	-	-	-	-	-	-
Napa	-	-	-	-	-	-	-	-	-
Nevada	-	-	-	-	-	-	-	-	-
Orange	-	-	-	-	-	-	-	-	-
Placer	-	-	-	-	-	-	-	-	-
Plumas	-	-	-	-	-	-	-	-	-
Riverside	-	-	-	-	-	-	-	-	-
Sacramento	-	-	-	-	-	-	-	-	-
San Benito	-	-	-	-	-	-	-	-	-
San Bernardino	-	-	-	-	-	-	-	-	-
San Diego	-	-	-	-	-	-	-	-	-
San Joaquin	-	-	-	-	-	-	-	-	-
San Luis Obispo	-	-	-	-	-	-	-	-	-
San Mateo	-	-	-	-	-	-	-	-	-
Santa Barbara	-	-	-	-	-	-	-	-	-
Santa Clara	-	-	-	-	-	-	-	-	-
Santa Cruz	-	-	-	-	-	-	-	-	-
Shasta	-	-	-	-	-	-	-	-	-
Sierra	-	-	-	-	-	-	-	-	-
Siskiyou	-	-	-	-	-	-	-	-	-
Solano	-	-	-	-	-	-	-	-	-
Sonoma	-	-	-	-	-	-	-	-	-
Stanislaus	-	-	-	-	-	-	-	-	-
Sutter	-	-	-	-	-	-	-	-	-
Tehama	-	-	-	-	-	-	-	-	-
Trinity	-	-	-	-	-	-	-	-	-
Tulare	-	-	-	-	-	-	-	-	-
Tuolumne	-	-	-	-	-	-	-	-	-
Ventura	-	-	-	-	-	-	-	-	-
Yolo	-	-	-	-	-	-	-	-	-
Cities									
Camarillo	-	-	-	-	-	-	-	-	-
Hayward	-	-	-	-	-	-	-	-	-
Menlo Park	-	-	-	-	-	-	-	-	-
Newark	-	-	-	-	-	-	-	-	-
Palo Alto	-	-	-	-	-	-	-	-	-
Perris	-	-	-	-	-	-	-	-	-
RedLands	-	-	-	-	-	-	-	-	-
Totals									
Counties	-	-	64	-	-	-	-	-	64
Cities	-	-	-	-	-	-	-	-	-
Grand Totals	-	-	64	-	-	-	-	-	64

Cumulative Nonrenewal Acreage (Farmland Security Zone)

Participating Local Jurisdictions	2003								TOTAL
	Farmland Security Zone Contracts								
	First 10-years				Last 10-years				
	Urban		Non-Urban		Urban		Non-Urban		
	Prime	Nonprime	Prime	Nonprime	Prime	Nonprime	Prime	Nonprime	
Counties									
Alameda	-	-	-	-	-	-	-	-	-
Amador	-	-	-	-	-	-	-	-	-
Butte	-	-	-	-	-	-	-	-	-
Calaveras	-	-	-	-	-	-	-	-	-
Colusa	-	-	-	-	-	-	-	-	-
Contra Costa	-	-	-	-	-	-	-	-	-
El Dorado	-	-	-	-	-	-	-	-	-
Fresno	-	-	-	-	-	-	-	-	-
Glenn	-	-	-	-	-	-	-	-	-
Humboldt	-	-	-	-	-	-	-	-	-
Imperial	-	-	-	-	-	-	-	-	-
Kern	-	-	-	-	-	-	-	-	-
Kings	-	-	64	-	-	-	-	-	64
Lake	-	-	-	-	-	-	-	-	-
Lassen	-	-	-	-	-	-	-	-	-
Los Angeles	-	-	-	-	-	-	-	-	-
Madera	-	-	-	-	-	-	-	-	-
Marin	-	-	-	-	-	-	-	-	-
Mariposa	-	-	-	-	-	-	-	-	-
Mendocino	-	-	-	-	-	-	-	-	-
Merced	-	-	-	-	-	-	-	-	-
Modoc	-	-	-	-	-	-	-	-	-
Mono	-	-	-	-	-	-	-	-	-
Monterey	-	-	-	-	-	-	-	-	-
Napa	-	-	-	-	-	-	-	-	-
Nevada	-	-	-	-	-	-	-	-	-
Orange	-	-	-	-	-	-	-	-	-
Placer	-	-	-	-	-	-	-	-	-
Plumas	-	-	-	-	-	-	-	-	-
Riverside	-	-	-	-	-	-	-	-	-
Sacramento	-	-	-	-	-	-	-	-	-
San Benito	-	-	-	-	-	-	-	-	-
San Bernardino	-	-	-	-	-	-	-	-	-
San Diego	-	-	-	-	-	-	-	-	-
San Joaquin	-	-	-	-	-	-	-	-	-
San Luis Obispo	-	-	-	-	-	-	-	-	-
San Mateo	-	-	-	-	-	-	-	-	-
Santa Barbara	-	-	-	-	-	-	-	-	-
Santa Clara	-	-	-	-	-	-	-	-	-
Santa Cruz	-	-	-	-	-	-	-	-	-
Shasta	-	-	-	-	-	-	-	-	-
Sierra	-	-	-	-	-	-	-	-	-
Siskiyou	-	-	-	-	-	-	-	-	-
Solano	-	-	-	-	-	-	-	-	-
Sonoma	-	-	-	-	-	-	-	-	-
Stanislaus	-	-	-	-	-	-	-	-	-
Sutter	-	-	-	-	-	-	-	-	-
Tehama	-	-	-	-	-	-	-	-	-
Trinity	-	-	-	-	-	-	-	-	-
Tulare	-	-	-	-	-	-	-	-	-
Tuolumne	-	-	-	-	-	-	-	-	-
Ventura	-	-	-	-	-	-	-	-	-
Yolo	-	-	-	-	-	-	-	-	-
Cities									
Camarillo	-	-	-	-	-	-	-	-	-
Hayward	-	-	-	-	-	-	-	-	-
Menlo Park	-	-	-	-	-	-	-	-	-
Newark	-	-	-	-	-	-	-	-	-
Palo Alto	-	-	-	-	-	-	-	-	-
Perris	-	-	-	-	-	-	-	-	-
RedLands	-	-	-	-	-	-	-	-	-
Totals									
Counties	-	-	64	-	-	-	-	-	64
Cities	-	-	-	-	-	-	-	-	-
Grand Totals	-	-	64	-	-	-	-	-	64

New Enrollments (Acres)

Participating Local Jurisdictions	2002									
	Land Conservation Act		Farmland Security Zone				Agricultural Conservation Easement		Other Enforceable Restriction	TOTAL
	Prime	Nonprime	Urban		Non-Urban		Prime	Nonprime		
			Prime	Nonprime	Prime	Nonprime				
Counties										
Alameda	-	-	-	-	-	-	-	-	-	-
Amador	-	-	-	-	-	-	-	-	-	-
Butte	1,790	526	-	-	-	-	-	-	-	2,316
Calaveras	-	1,532	-	-	-	-	-	-	-	1,532
Colusa	1,434	832	447	142	3,263	59	-	-	-	6,176
Contra Costa	788	-	-	-	-	-	-	-	-	788
El Dorado	41	156	-	-	-	-	-	-	-	197
Fresno	428	826	-	-	420	63	-	-	-	1,737
Glenn	1,535	743	-	-	4,626	392	-	-	-	7,296
Humboldt	65	-	-	-	-	-	-	-	-	65
Imperial	61,128	7,477	-	-	-	-	-	-	-	68,605
Kern	4,646	6,776	-	-	160	-	-	-	-	11,582
Kings	754	40	-	-	3,741	30	-	-	-	4,565
Lake	-	-	-	-	-	-	-	-	-	-
Lassen	642	68	-	-	-	-	-	-	-	710
Los Angeles	-	-	-	-	-	-	-	-	-	-
Madera	293	504	-	-	961	74	-	-	-	1,832
Marin	-	-	-	-	-	-	-	-	-	-
Mariposa	-	4,017	-	-	-	-	-	-	-	4,017
Mendocino	69	2,296	-	-	-	-	-	-	-	2,365
Merced	21,425	53,763	-	-	-	-	-	-	-	75,188
Modoc	-	-	-	-	-	-	-	-	-	-
Mono	1,716	-	-	-	-	-	-	-	-	1,716
Monterey	190	2,283	146	-	-	-	-	-	-	2,619
Napa	132	106	-	-	-	-	-	-	-	238
Nevada	545	-	-	-	-	-	-	-	-	545
Orange	-	-	-	-	-	-	-	-	-	-
Placer	-	16	-	-	-	-	-	-	-	16
Plumas	-	-	-	-	-	-	-	-	-	-
Riverside	-	-	-	-	-	-	255	214	-	469
Sacramento	833	242	-	-	-	-	-	-	-	1,075
San Benito	531	3,662	-	-	-	-	-	-	-	4,193
San Bernardino	-	-	-	-	-	-	-	-	-	-
San Diego	10	1	-	-	-	-	-	-	-	11
San Joaquin	606	36	-	-	-	-	-	-	-	642
San Luis Obispo	519	6,076	-	-	-	-	-	-	-	6,594
San Mateo	27	11	-	-	-	-	-	-	-	38
Santa Barbara	-	-	-	-	-	-	-	-	-	-
Santa Clara	9	9,870	-	-	-	-	-	-	-	9,879
Santa Cruz	-	-	-	-	-	-	-	-	-	-
Shasta	-	4,119	-	-	-	-	-	-	-	4,119
Sierra	-	1,160	-	-	-	-	-	-	-	1,160
Siskiyou	6	1,944	-	-	-	-	-	-	-	1,950
Solano	178	89	-	-	-	-	-	-	-	267
Sonoma	5	324	-	-	-	-	-	-	-	329
Stanislaus	453	2,710	-	-	-	-	-	-	-	3,163
Sutter	24,494	7,350	-	-	-	-	-	-	-	31,844
Tehama	-	443	-	-	-	-	-	-	-	443
Trinity	-	-	-	-	-	-	-	-	-	-
Tulare	512	870	252	-	-	-	-	-	-	1,634
Tuolumne	-	283	-	-	-	-	-	-	-	283
Ventura	574	1,959	106	16	-	-	-	-	-	2,656
Yolo	270	1,528	-	-	-	-	66	4	-	1,868
Cities										
Camarillo	-	-	-	-	-	-	-	-	-	-
Hayward	-	-	-	-	-	-	-	-	-	-
Menlo Park	-	-	-	-	-	-	-	-	-	-
Newark	-	-	-	-	-	-	-	-	-	-
Palo Alto	-	-	-	-	-	-	-	-	-	-
Perris	-	-	-	-	-	-	-	-	-	-
RedLands	-	-	-	-	-	-	-	-	-	-
Totals										
Counties	126,648	124,638	951	158	13,171	618	321	218	-	266,723
Cities	-	-	-	-	-	-	-	-	-	-
Grand Totals	126,648	124,638	951	158	13,171	618	321	218	-	266,723

New Enrollments (Acres)

Participating Local Jurisdictions	2003									
	Land Conservation Act		Farmland Security Zone				Agricultural Conservation Easement		Other Enforceable Restriction	TOTAL
	Prime	Nonprime	Urban		Non-Urban		Prime	Nonprime		
			Prime	Nonprime	Prime	Nonprime				
Counties										
Alameda	176	85	-	-	-	-	-	-	-	260
Amador	-	-	-	-	-	-	-	-	-	-
Butte	2,043	200	-	-	-	-	-	-	-	2,243
Calaveras	75	536	-	-	-	-	-	-	-	611
Colusa	-	527	648	16	2,916	10	-	-	-	4,118
Contra Costa	-	-	-	-	-	-	-	-	-	-
El Dorado	60	263	-	-	-	-	-	-	-	322
Fresno	1,835	1,241	-	-	-	-	-	-	-	3,077
Glenn	-	394	-	-	7,310	41	-	-	-	7,745
Humboldt	-	-	-	-	-	-	-	-	-	-
Imperial	11,760	679	-	-	-	-	-	-	-	12,440
Kern	1,521	863	10	-	1,720	-	-	-	-	4,115
Kings	238	-	-	-	86	-	-	-	-	325
Lake	-	-	-	-	-	-	-	-	-	-
Lassen	110	1,382	-	-	799	279	-	-	-	2,571
Los Angeles	-	-	-	-	-	-	-	-	-	-
Madera	456	1,904	74	-	287	-	328	-	-	3,048
Marin	-	-	-	-	-	-	-	-	-	-
Mariposa	-	1,355	-	-	-	-	-	-	-	1,355
Mendocino	3	344	-	-	-	-	-	-	-	347
Merced	3,950	119	-	-	-	-	-	-	-	4,070
Modoc	6,972	23,758	-	-	-	-	-	-	-	30,730
Mono	2,443	-	-	-	-	-	-	-	-	2,443
Monterey	4	3,319	295	35	2,881	1,378	-	-	-	7,912
Napa	199	327	-	-	-	-	-	-	-	527
Nevada	559	-	-	-	-	-	-	-	-	559
Orange	-	-	-	-	-	-	-	-	-	-
Placer	-	-	-	-	-	307	-	-	-	307
Plumas	-	191	-	-	-	-	-	-	-	191
Riverside	-	-	-	-	-	-	-	-	-	-
Sacramento	-	1,760	-	-	-	-	-	-	-	1,760
San Benito	147	2,599	-	-	-	-	-	-	-	2,746
San Bernardino	-	-	-	-	-	-	-	-	-	-
San Diego	-	-	-	-	-	-	-	-	-	-
San Joaquin	1,388	835	-	-	-	-	-	-	-	2,223
San Luis Obispo	632	3,499	-	-	-	-	-	-	-	4,131
San Mateo	92	96	-	-	-	-	-	-	-	188
Santa Barbara	36	168	-	-	-	-	-	-	-	204
Santa Clara	-	-	-	-	-	-	-	-	-	-
Santa Cruz	-	-	-	-	-	-	-	-	-	-
Shasta	-	2,559	-	-	-	-	-	-	-	2,559
Sierra	-	-	-	-	-	-	-	-	-	-
Siskiyou	290	1,097	-	-	-	-	-	-	-	1,387
Solano	164	1,734	-	-	-	-	-	-	-	1,898
Sonoma	135	405	-	-	-	-	-	-	-	540
Stanislaus	694	739	-	-	-	-	-	-	-	1,433
Sutter	8,594	4,027	-	-	-	-	-	-	-	12,621
Tehama	107	266	-	-	-	-	-	-	-	373
Trinity	-	-	-	-	-	-	-	-	-	-
Tulare	86	472	38	-	-	-	-	-	-	596
Tuolumne	-	-	-	-	-	-	-	-	-	-
Ventura	512	403	54	15	-	-	-	-	-	984
Yolo	38	1	-	-	-	-	-	-	-	39
Cities										
Camarillo	-	-	-	-	-	-	-	-	-	-
Hayward	-	-	-	-	-	-	-	-	-	-
Menlo Park	-	-	-	-	-	-	-	-	-	-
Newark	-	-	-	-	-	-	-	-	-	-
Palo Alto	-	-	-	-	-	-	-	-	-	-
Perris	-	-	-	-	-	-	-	-	-	-
RedLands	-	-	-	-	-	-	-	-	-	-
Totals										
Counties	45,320	58,148	1,120	66	16,000	2,016	328	-	-	122,998
Cities	-	-	-	-	-	-	-	-	-	-
Grand Totals	45,320	58,148	1,120	66	16,000	2,016	328	-	-	122,998

Nonrenewal Initiations (Acres)

Participating Local Jurisdictions	2002							2003						
	Land Conservation Act		Farmland Security Zone				TOTAL	Land Conservation Act		Farmland Security Zone				TOTAL
	Prime	Nonprime	Urban		Non-Urban			Prime	Nonprime	Urban		Non-Urban		
			Prime	Nonprime	Prime	Nonprime	Prime			Nonprime	Prime	Nonprime		
Counties														
Alameda	-	-	-	-	-	-	-	-	101	-	-	-	-	101
Amador	-	680	-	-	-	-	680	-	135	-	-	-	-	135
Butte	59	-	-	-	-	-	59	-	-	-	-	-	-	-
Calaveras	-	237	-	-	-	-	237	44	1,267	-	-	-	-	1,311
Colusa	-	-	-	-	-	-	-	632	32	-	-	-	-	664
Contra Costa	32	971	-	-	-	-	1,003	139	100	-	-	-	-	239
El Dorado	-	109	-	-	-	-	109	-	-	-	-	-	-	-
Fresno	848	60	-	-	-	-	908	165	71	-	-	-	-	236
Glenn	-	477	-	-	-	-	477	-	-	-	-	-	-	-
Humboldt	-	-	-	-	-	-	-	-	184	-	-	-	-	184
Imperial	-	-	-	-	-	-	-	-	-	-	-	-	-	-
Kern	1,332	639	-	-	-	-	1,971	1,429	-	-	-	-	-	1,429
Kings	217	-	-	-	-	-	217	61	-	-	-	-	-	61
Lake	29	-	-	-	-	-	29	-	-	-	-	-	-	-
Lassen	-	-	-	-	-	-	-	-	-	-	-	-	-	-
Los Angeles	-	-	-	-	-	-	-	-	-	-	-	-	-	-
Madera	219	-	-	-	-	-	219	56	38	-	-	-	-	94
Marin	-	-	-	-	-	-	-	-	-	-	-	-	-	-
Mariposa	-	-	-	-	-	-	-	-	-	-	-	-	-	-
Mendocino	-	-	-	-	-	-	-	-	-	-	-	-	-	-
Merced	-	-	-	-	-	-	-	-	-	-	-	-	-	-
Modoc	-	-	-	-	-	-	-	-	-	-	-	-	-	-
Mono	-	-	-	-	-	-	-	-	-	-	-	-	-	-
Monterey	-	-	-	-	-	-	-	-	19	-	-	-	-	19
Napa	148	-	-	-	-	-	148	396	341	-	-	-	-	737
Nevada	-	-	-	-	-	-	-	-	-	-	-	-	-	-
Orange	-	-	-	-	-	-	-	-	-	-	-	-	-	-
Placer	139	396	-	-	-	-	535	568	2,564	-	-	-	-	3,132
Plumas	-	-	-	-	-	-	-	-	-	-	-	-	-	-
Riverside	83	6	-	-	-	-	90	0	1	-	-	-	-	1
Sacramento	-	-	-	-	-	-	-	185	301	-	-	-	-	486
San Benito	33	2,384	-	-	-	-	2,417	-	25	-	-	-	-	25
San Bernardino	366	-	-	-	-	-	366	108	-	-	-	-	-	108
San Diego	-	-	-	-	-	-	-	-	49	-	-	-	-	49
San Joaquin	390	-	-	-	-	-	390	14,526	419	-	-	-	-	14,945
San Luis Obispo	170	316	-	-	-	-	486	15	62	-	-	-	-	77
San Mateo	-	-	-	-	-	-	-	283	-	-	-	-	-	283
Santa Barbara	351	1,415	-	-	-	-	1,766	376	408	-	-	-	-	784
Santa Clara	382	3,741	-	-	-	-	4,123	-	-	-	-	-	-	-
Santa Cruz	-	-	-	-	-	-	-	-	-	-	-	-	-	-
Shasta	-	5	-	-	-	-	5	-	-	-	-	-	-	-
Sierra	-	-	-	-	-	-	-	-	-	-	-	-	-	-
Siskiyou	57	82	-	-	-	-	139	-	-	-	-	-	-	-
Solano	191	5	-	-	-	-	195	376	385	-	-	-	-	761
Sonoma	-	-	-	-	-	-	-	-	-	-	-	-	-	-
Stanislaus	539	5,243	-	-	-	-	5,782	2,165	496	-	-	-	-	2,661
Sutter	32	-	-	-	-	-	32	-	-	-	-	-	-	-
Tehama	227	916	-	-	-	-	1,143	-	350	-	-	-	-	350
Trinity	-	-	-	-	-	-	-	-	-	-	-	-	-	-
Tulare	492	-	-	-	-	-	492	676	72	-	-	-	-	749
Tuolumne	-	58	-	-	-	-	58	-	384	-	-	-	-	384
Ventura	155	1,048	-	-	-	-	1,203	106	-	-	-	-	-	106
Yolo	379	25	-	-	-	-	404	899	95	-	-	-	-	994
Cities														
Camarillo	-	-	-	-	-	-	-	-	-	-	-	-	-	-
Hayward	-	-	-	-	-	-	-	-	-	-	-	-	-	-
Menlo Park	-	-	-	-	-	-	-	-	-	-	-	-	-	-
Newark	-	-	-	-	-	-	-	-	-	-	-	-	-	-
Palo Alto	-	-	-	-	-	-	-	-	-	-	-	-	-	-
Perris	-	-	-	-	-	-	-	-	-	-	-	-	-	-
RedLands	-	-	-	-	-	-	-	-	-	-	-	-	-	-
Totals														
Counties	6,869	18,812	-	-	-	-	25,681	23,206	7,899	-	-	-	-	31,104
Cities	-	-	-	-	-	-	-	-	-	-	-	-	-	-
Grand Totals	6,869	18,812	-	-	-	-	25,681	23,206	7,899	-	-	-	-	31,104

Nonrenewal Expirations (Acres)

Participating Local Jurisdictions	2002							2003						
	Land Conservation Act		Farmland Security Zone				TOTAL	Land Conservation Act		Farmland Security Zone				TOTAL
	Prime	Nonprime	Urban		Non-Urban			Prime	Nonprime	Urban		Non-Urban		
			Prime	Nonprime	Prime	Nonprime	Prime			Nonprime	Prime	Nonprime		
Counties														
Alameda	-	264	-	-	-	-	264	18	14	-	-	-	-	32
Amador	-	80	-	-	-	-	80	-	-	-	-	-	-	-
Butte	89	315	-	-	-	-	404	1,489	158	-	-	-	-	1,647
Calaveras	101	1,479	-	-	-	-	1,581	-	140	-	-	-	-	140
Colusa	-	-	-	-	-	-	-	-	-	-	-	-	-	-
Contra Costa	178	255	-	-	-	-	433	-	-	-	-	-	-	-
El Dorado	-	4,387	-	-	-	-	4,387	10	156	-	-	-	-	166
Fresno	281	40	-	-	-	-	321	554	-	-	-	-	-	554
Glenn	-	-	-	-	-	-	-	-	-	-	-	-	-	-
Humboldt	75	173	-	-	-	-	248	-	-	-	-	-	-	-
Imperial	-	-	-	-	-	-	-	-	-	-	-	-	-	-
Kern	3,322	165	-	-	-	-	3,487	-	-	-	-	-	-	-
Kings	206	648	-	-	-	-	854	1,466	-	-	-	-	-	1,466
Lake	-	26	-	-	-	-	26	-	-	-	-	-	-	-
Lassen	-	-	-	-	-	-	-	-	-	-	-	-	-	-
Los Angeles	-	-	-	-	-	-	-	-	-	-	-	-	-	-
Madera	5,406	3,055	-	-	-	-	8,461	-	1,362	-	-	-	-	1,362
Marin	-	-	-	-	-	-	-	-	-	-	-	-	-	-
Mariposa	-	-	-	-	-	-	-	-	-	-	-	-	-	-
Mendocino	-	237	-	-	-	-	237	-	40	-	-	-	-	40
Merced	-	-	-	-	-	-	-	-	-	-	-	-	-	-
Modoc	-	-	-	-	-	-	-	-	-	-	-	-	-	-
Mono	-	-	-	-	-	-	-	-	-	-	-	-	-	-
Monterey	-	-	-	-	-	-	-	-	-	-	-	-	-	-
Napa	-	-	-	-	-	-	-	-	-	-	-	-	-	-
Nevada	1,412	-	-	-	-	-	1,412	-	-	-	-	-	-	-
Orange	-	-	-	-	-	-	-	-	-	-	-	-	-	-
Placer	75	181	-	-	-	-	256	151	1	-	-	-	-	152
Plumas	-	-	-	-	-	-	-	-	-	-	-	-	-	-
Riverside	164	5	-	-	-	-	170	96	3	-	-	-	-	99
Sacramento	155	1,267	-	-	-	-	1,422	100	-	-	-	-	-	100
San Benito	-	-	-	-	-	-	-	55	671	-	-	-	-	726
San Bernardino	381	-	-	-	-	-	381	-	-	-	-	-	-	-
San Diego	440	185	-	-	-	-	625	166	136	-	-	-	-	302
San Joaquin	1,981	646	-	-	-	-	2,627	957	681	-	-	-	-	1,638
San Luis Obispo	19	258	-	-	-	-	276	108	215	-	-	-	-	323
San Mateo	-	-	-	-	-	-	-	-	-	-	-	-	-	-
Santa Barbara	82	26	-	-	-	-	108	-	-	-	-	-	-	-
Santa Clara	47	-	-	-	-	-	47	-	-	-	-	-	-	-
Santa Cruz	22	22	-	-	-	-	44	-	-	-	-	-	-	-
Shasta	-	60	-	-	-	-	60	-	-	-	-	-	-	-
Sierra	-	-	-	-	-	-	-	-	-	-	-	-	-	-
Siskiyou	-	-	-	-	-	-	-	337	516	-	-	-	-	853
Solano	135	2,937	-	-	-	-	3,072	1,058	2,015	-	-	-	-	3,073
Sonoma	-	179	-	-	-	-	179	-	174	-	-	-	-	174
Stanislaus	112	-	-	-	-	-	112	82	-	-	-	-	-	82
Sutter	-	-	-	-	-	-	-	-	-	-	-	-	-	-
Tehama	25	290	-	-	-	-	315	20	1,730	-	-	-	-	1,750
Trinity	-	-	-	-	-	-	-	-	-	-	-	-	-	-
Tulare	158	-	-	-	-	-	158	313	517	-	-	-	-	830
Tuolumne	-	568	-	-	-	-	568	-	356	-	-	-	-	356
Ventura	-	-	-	-	-	-	-	6	126	-	-	-	-	132
Yolo	2,932	2,114	-	-	-	-	5,046	480	53	-	-	-	-	532
Cities														
Camarillo	-	-	-	-	-	-	-	-	-	-	-	-	-	-
Hayward	-	-	-	-	-	-	-	-	-	-	-	-	-	-
Menlo Park	-	-	-	-	-	-	-	-	-	-	-	-	-	-
Newark	-	-	-	-	-	-	-	-	-	-	-	-	-	-
Palo Alto	-	-	-	-	-	-	-	-	-	-	-	-	-	-
Perris	-	-	-	-	-	-	-	-	-	-	-	-	-	-
RedLands	65	-	-	-	-	-	65	-	-	-	-	-	-	-
Totals														
Counties	17,800	19,862	-	-	-	-	37,662	7,466	9,062	-	-	-	-	16,527
Cities	65	-	-	-	-	-	65	-	-	-	-	-	-	-
Grand Totals	17,865	19,862	-	-	-	-	37,727	7,466	9,062	-	-	-	-	16,527

Nonrenewals Withdrawn Acreage (Land Conservation Act)

Participating Local Jurisdictions	2002			2003		
	Land Conservation Act		TOTAL	Land Conservation Act		TOTAL
	Prime	Nonprime		Prime	Nonprime	
Counties						
Alameda	-	-	-	-	-	-
Amador	-	-	-	-	-	-
Butte	-	-	-	-	-	-
Calaveras	-	-	-	-	-	-
Colusa	-	-	-	-	-	-
Contra Costa	-	-	-	-	-	-
El Dorado	-	-	-	-	-	-
Fresno	-	-	-	-	-	-
Glenn	-	-	-	-	-	-
Humboldt	-	-	-	-	-	-
Imperial	-	-	-	-	-	-
Kern	-	-	-	-	-	-
Kings	89	-	89	-	-	-
Lake	-	-	-	-	-	-
Lassen	-	-	-	-	-	-
Los Angeles	-	-	-	-	-	-
Madera	-	-	-	-	151	151
Marin	-	-	-	-	-	-
Mariposa	-	-	-	-	-	-
Mendocino	-	1,226	1,226	-	-	-
Merced	-	-	-	-	-	-
Modoc	-	-	-	-	-	-
Mono	-	-	-	-	-	-
Monterey	-	-	-	-	-	-
Napa	244	53	297	-	-	-
Nevada	-	-	-	-	-	-
Orange	-	-	-	-	-	-
Placer	4	5	9	-	-	-
Plumas	-	-	-	-	-	-
Riverside	-	-	-	-	-	-
Sacramento	-	-	-	-	-	-
San Benito	-	-	-	-	-	-
San Bernardino	-	-	-	-	-	-
San Diego	8	16	24	-	-	-
San Joaquin	24	-	24	-	-	-
San Luis Obispo	-	-	-	-	-	-
San Mateo	-	-	-	-	-	-
Santa Barbara	1	99	100	-	-	-
Santa Clara	-	-	-	-	-	-
Santa Cruz	-	-	-	-	-	-
Shasta	-	-	-	20	439	459
Sierra	-	-	-	-	-	-
Siskiyou	-	-	-	-	-	-
Solano	22	-	22	-	-	-
Sonoma	-	-	-	-	-	-
Stanislaus	-	-	-	-	-	-
Sutter	-	-	-	-	-	-
Tehama	-	-	-	-	-	-
Trinity	-	-	-	-	-	-
Tulare	-	-	-	-	-	-
Tuolumne	-	-	-	-	-	-
Ventura	-	-	-	-	-	-
Yolo	77	2	80	271	4	276
Cities						
Camarillo	-	-	-	-	-	-
Hayward	-	-	-	-	-	-
Menlo Park	-	-	-	-	-	-
Newark	-	-	-	-	-	-
Palo Alto	-	-	-	-	-	-
Perris	-	-	-	-	-	-
RedLands	-	-	-	-	-	-
Totals						
Counties	470	1,401	1,871	291	595	886
Cities	-	-	-	-	-	-
Grand Totals	470	1,401	1,871	291	595	886

Cancellations (Acres)

Participating Local Jurisdictions	2002									
	Land Conservation Act*		Farmland Security Zone*				Agricultural Conservation Easement		Other Enforceable Restriction	TOTAL
	Prime	Nonprime	Urban		Non-Urban		Prime	Nonprime		
			Prime	Nonprime	Prime	Nonprime				
Counties										
Alameda	-	-	-	-	-	-	-	-	-	-
Amador	-	-	-	-	-	-	-	-	-	-
Butte	-	-	-	-	-	-	-	-	-	-
Calaveras	-	-	-	-	-	-	-	-	-	-
Colusa	-	-	-	-	-	-	-	-	-	-
Contra Costa	-	-	-	-	-	-	-	-	-	-
El Dorado	-	-	-	-	-	-	-	-	-	-
Fresno	67	-	-	-	-	-	-	-	-	67
Glenn	-	-	-	-	-	-	-	-	-	-
Humboldt	-	-	-	-	-	-	-	-	-	-
Imperial	-	-	-	-	-	-	-	-	-	-
Kern	49	-	-	-	-	-	-	-	-	49
Kings	24	-	-	-	-	-	-	-	-	24
Lake	-	-	-	-	-	-	-	-	-	-
Lassen	-	-	-	-	-	-	-	-	-	-
Los Angeles	-	-	-	-	-	-	-	-	-	-
Madera	-	-	-	-	-	-	-	-	-	-
Marin	-	-	-	-	-	-	-	-	-	-
Mariposa	-	-	-	-	-	-	-	-	-	-
Mendocino	-	-	-	-	-	-	-	-	-	-
Merced	-	-	-	-	-	-	-	-	-	-
Modoc	-	-	-	-	-	-	-	-	-	-
Mono	-	-	-	-	-	-	-	-	-	-
Monterey	-	-	-	-	-	-	-	-	-	-
Napa	-	-	-	-	-	-	-	-	-	-
Nevada	-	-	-	-	-	-	-	-	-	-
Orange	-	-	-	-	-	-	-	-	-	-
Placer	-	-	-	-	-	-	-	-	-	-
Plumas	-	-	-	-	-	-	-	-	-	-
Riverside	-	-	-	-	-	-	-	-	-	-
Sacramento	-	-	-	-	-	-	-	-	-	-
San Benito	-	-	-	-	-	-	-	-	-	-
San Bernardino	-	-	-	-	-	-	-	-	-	-
San Diego	-	-	-	-	-	-	-	-	-	-
San Joaquin	-	-	-	-	-	-	-	-	-	-
San Luis Obispo	-	-	-	-	-	-	-	-	-	-
San Mateo	-	-	-	-	-	-	-	-	-	-
Santa Barbara	-	-	-	-	-	-	-	-	-	-
Santa Clara	21	-	-	-	-	-	-	-	-	21
Santa Cruz	-	-	-	-	-	-	-	-	-	-
Shasta	-	-	-	-	-	-	-	-	-	-
Sierra	-	-	-	-	-	-	-	-	-	-
Siskiyou	-	-	-	-	-	-	-	-	-	-
Solano	-	-	-	-	-	-	-	-	-	-
Sonoma	-	-	-	-	-	-	-	-	-	-
Stanislaus	-	-	-	-	-	-	-	-	-	-
Sutter	-	-	-	-	-	-	-	-	-	-
Tehama	-	-	-	-	-	-	-	-	-	-
Trinity	-	-	-	-	-	-	-	-	-	-
Tulare	-	-	-	-	-	-	-	-	-	-
Tuolumne	-	-	-	-	-	-	-	-	-	-
Ventura	-	-	-	-	-	-	-	-	-	-
Yolo	-	-	-	-	-	-	-	-	-	-
Cities										
Camarillo	-	-	-	-	-	-	-	-	-	-
Hayward	-	-	-	-	-	-	-	-	-	-
Menlo Park	-	-	-	-	-	-	-	-	-	-
Newark	-	-	-	-	-	-	-	-	-	-
Palo Alto	-	-	-	-	-	-	-	-	-	-
Perris	-	-	-	-	-	-	-	-	-	-
RedLands	-	-	-	-	-	-	-	-	-	-
Totals										
Counties	161	-	-	-	-	-	-	-	-	161
Cities	-	-	-	-	-	-	-	-	-	-
Grand Totals	161	-	-	-	-	-	-	-	-	161

*Includes both continuing term and nonrenewal contracts.

Cancellations (Acres)

Participating Local Jurisdictions	2003									
	Land Conservation Act*		Farmland Security Zone*				Agricultural Conservation Easement		Other Enforceable Restriction	TOTAL
	Prime	Nonprime	Urban		Non-Urban		Prime	Nonprime		
			Prime	Nonprime	Prime	Nonprime				
Counties										
Alameda	-	-	-	-	-	-	-	-	-	-
Amador	-	-	-	-	-	-	-	-	-	-
Butte	-	-	-	-	-	-	-	-	-	-
Calaveras	-	-	-	-	-	-	-	-	-	-
Colusa	-	-	-	-	-	-	-	-	-	-
Contra Costa	-	-	-	-	-	-	-	-	-	-
El Dorado	-	-	-	-	-	-	-	-	-	-
Fresno	91	37	-	-	-	-	-	-	-	128
Glenn	-	-	-	-	-	-	-	-	-	-
Humboldt	-	-	-	-	-	-	-	-	-	-
Imperial	-	-	-	-	-	-	-	-	-	-
Kern	39	-	-	-	-	-	-	-	-	39
Kings	-	-	-	-	-	-	-	-	-	-
Lake	-	-	-	-	-	-	-	-	-	-
Lassen	-	-	-	-	-	-	-	-	-	-
Los Angeles	-	-	-	-	-	-	-	-	-	-
Madera	-	-	-	-	-	-	-	-	-	-
Marin	-	-	-	-	-	-	-	-	-	-
Mariposa	-	-	-	-	-	-	-	-	-	-
Mendocino	-	-	-	-	-	-	-	-	-	-
Merced	-	-	-	-	-	-	-	-	-	-
Modoc	-	-	-	-	-	-	-	-	-	-
Mono	-	-	-	-	-	-	-	-	-	-
Monterey	-	-	-	-	-	-	-	-	-	-
Napa	-	-	-	-	-	-	-	-	-	-
Nevada	-	-	-	-	-	-	-	-	-	-
Orange	-	-	-	-	-	-	-	-	-	-
Placer	-	23	-	-	-	-	-	-	-	23
Plumas	-	-	-	-	-	-	-	-	-	-
Riverside	145	20	-	-	-	-	-	-	-	165
Sacramento	155	-	-	-	-	-	-	-	-	155
San Benito	-	-	-	-	-	-	-	-	-	-
San Bernardino	-	-	-	-	-	-	-	-	-	-
San Diego	-	-	-	-	-	-	-	-	-	-
San Joaquin	-	-	-	-	-	-	-	-	-	-
San Luis Obispo	-	-	-	-	-	-	-	-	-	-
San Mateo	-	-	-	-	-	-	-	-	-	-
Santa Barbara	-	-	-	-	-	-	-	-	-	-
Santa Clara	-	-	-	-	-	-	-	-	-	-
Santa Cruz	-	-	-	-	-	-	-	-	-	-
Shasta	-	-	-	-	-	-	-	-	-	-
Sierra	-	-	-	-	-	-	-	-	-	-
Siskiyou	-	-	-	-	-	-	-	-	-	-
Solano	-	-	-	-	-	-	-	-	-	-
Sonoma	-	-	-	-	-	-	-	-	-	-
Stanislaus	-	-	-	-	-	-	-	-	-	-
Sutter	1	-	-	-	-	-	-	-	-	1
Tehama	-	-	-	-	-	-	-	-	-	-
Trinity	-	-	-	-	-	-	-	-	-	-
Tulare	-	-	-	-	-	-	-	-	-	-
Tuolumne	-	-	-	-	-	-	-	-	-	-
Ventura	-	-	-	-	-	-	-	-	-	-
Yolo	-	-	-	-	-	-	-	-	-	-
Cities										
Camarillo	-	-	-	-	-	-	-	-	-	-
Hayward	-	-	-	-	-	-	-	-	-	-
Menlo Park	-	-	-	-	-	-	-	-	-	-
Newark	-	-	-	-	-	-	-	-	-	-
Palo Alto	-	-	-	-	-	-	-	-	-	-
Perris	-	-	-	-	-	-	-	-	-	-
RedLands	-	-	-	-	-	-	-	-	-	-
Totals										
Counties	430	80	-	-	-	-	-	-	-	510
Cities	-	-	-	-	-	-	-	-	-	-
Grand Totals	430	80	-	-	-	-	-	-	-	510

*Includes both continuing term and nonrenewal contracts.

Public Acquisitions (Acres)

Participating Local Jurisdictions	2002									
	Land Conservation Act*		Farmland Security Zone*				Agricultural Conservation Easement		Other Enforceable Restriction	TOTAL
	Prime	Nonprime	Urban		Non-Urban		Prime	Nonprime		
			Prime	Nonprime	Prime	Nonprime				
Counties										
Alameda	-	1,306	-	-	-	-	-	-	-	1,306
Amador	-	-	-	-	-	-	-	-	-	-
Butte	-	-	-	-	-	-	-	-	-	-
Calaveras	-	424	-	-	-	-	-	-	-	424
Colusa	-	633	-	-	-	-	-	-	-	633
Contra Costa	58	476	-	-	-	-	-	-	-	534
El Dorado	-	-	-	-	-	-	-	-	-	-
Fresno	1,192	320	-	-	-	-	-	-	-	1,512
Glenn	-	-	-	-	-	-	-	-	-	-
Humboldt	-	-	-	-	-	-	-	-	-	-
Imperial	-	-	-	-	-	-	-	-	-	-
Kern	6,084	2,907	-	-	-	-	-	-	-	8,991
Kings	22	29	-	-	-	-	-	-	-	51
Lake	-	1,675	-	-	-	-	-	-	-	1,675
Lassen	-	-	-	-	-	-	-	-	-	-
Los Angeles	-	-	-	-	-	-	-	-	-	-
Madera	130	-	-	-	-	-	-	-	-	130
Marin	-	-	-	-	-	-	-	-	-	-
Mariposa	-	-	-	-	-	-	-	-	-	-
Mendocino	94	48	-	-	-	-	-	-	-	142
Merced	-	34	-	-	-	-	-	-	-	34
Modoc	-	-	-	-	-	-	-	-	-	-
Mono	-	-	-	-	-	-	-	-	-	-
Monterey	-	-	-	-	-	-	-	-	-	-
Napa	-	-	-	-	-	-	-	-	-	-
Nevada	-	-	-	-	-	-	-	-	-	-
Orange	-	-	-	-	-	-	-	-	-	-
Placer	-	-	-	-	-	-	-	-	-	-
Plumas	-	-	-	-	-	-	-	-	-	-
Riverside	-	-	-	-	-	-	-	-	-	-
Sacramento	-	-	-	-	-	-	-	-	-	-
San Benito	-	-	-	-	-	-	-	-	-	-
San Bernardino	-	-	-	-	-	-	-	-	-	-
San Diego	441	8,376	-	-	-	-	-	-	-	8,817
San Joaquin	-	-	-	-	-	-	-	-	-	-
San Luis Obispo	-	-	-	-	-	-	-	-	-	-
San Mateo	-	-	-	-	-	-	-	-	-	-
Santa Barbara	-	-	-	-	-	-	-	-	-	-
Santa Clara	1	9,479	-	-	-	-	-	-	-	9,480
Santa Cruz	-	-	-	-	-	-	-	-	-	-
Shasta	-	-	-	-	-	-	-	-	-	-
Sierra	-	-	-	-	-	-	-	-	-	-
Siskiyou	-	980	-	-	-	-	-	-	-	980
Solano	-	13	-	-	-	-	-	-	-	13
Sonoma	-	-	-	-	-	-	-	-	-	-
Stanislaus	339	12	-	-	-	-	-	-	-	352
Sutter	-	-	-	-	-	-	-	-	-	-
Tehama	111	65	-	-	-	-	-	-	-	176
Trinity	-	-	-	-	-	-	-	-	-	-
Tulare	160	1,031	-	-	-	-	-	-	-	1,191
Tuolumne	-	-	-	-	-	-	-	-	-	-
Ventura	1	-	-	-	-	-	-	-	-	1
Yolo	7,031	5,792	-	-	-	-	-	-	-	12,823
Cities										
Camarillo	-	-	-	-	-	-	-	-	-	-
Hayward	-	-	-	-	-	-	-	-	-	-
Menlo Park	-	-	-	-	-	-	-	-	-	-
Newark	-	-	-	-	-	-	-	-	-	-
Palo Alto	-	-	-	-	-	-	-	-	-	-
Perris	-	-	-	-	-	-	-	-	-	-
RedLands	-	-	-	-	-	-	-	-	-	-
Totals										
Counties	15,664	33,601	-	-	-	-	-	-	-	49,265
Cities	-	-	-	-	-	-	-	-	-	-
Grand Totals	15,664	33,601	-	-	-	-	-	-	-	49,265

*Includes both continuing term and nonrenewal contracts.

Public Acquisitions (Acres)

Participating Local Jurisdictions	2003									
	Land Conservation Act*		Farmland Security Zone*				Agricultural Conservation Easement		Other Enforceable Restriction	TOTAL
	Prime	Nonprime	Urban		Non-Urban		Prime	Nonprime		
			Prime	Nonprime	Prime	Nonprime				
Counties										
Alameda	-	360	-	-	-	-	-	-	-	360
Amador	-	-	-	-	-	-	-	-	-	-
Butte	-	306	-	-	-	-	-	-	-	306
Calaveras	-	-	-	-	-	-	-	-	-	-
Colusa	-	-	-	-	-	-	-	-	-	-
Contra Costa	-	30	-	-	-	-	-	-	-	30
El Dorado	-	-	-	-	-	-	-	-	-	-
Fresno	13,102	-	-	-	-	-	-	-	-	13,102
Glenn	-	-	-	-	-	-	-	-	-	-
Humboldt	-	-	-	-	-	-	-	-	-	-
Imperial	-	-	-	-	-	-	-	-	-	-
Kern	2,611	3,950	-	-	82	-	-	-	-	6,643
Kings	4,217	437	-	-	12,727	599	-	-	-	17,979
Lake	-	-	-	-	-	-	-	-	-	-
Lassen	-	-	-	-	-	-	-	-	-	-
Los Angeles	-	-	-	-	-	-	-	-	-	-
Madera	-	170	-	-	-	-	-	-	-	170
Marin	-	-	-	-	-	-	-	-	-	-
Mariposa	-	-	-	-	-	-	-	-	-	-
Mendocino	-	46	-	-	-	-	-	-	-	46
Merced	13	-	-	-	-	-	-	-	-	13
Modoc	-	-	-	-	-	-	-	-	-	-
Mono	-	-	-	-	-	-	-	-	-	-
Monterey	-	-	-	-	-	-	-	-	-	-
Napa	-	-	-	-	-	-	-	-	-	-
Nevada	-	-	-	-	-	-	-	-	-	-
Orange	-	-	-	-	-	-	-	-	-	-
Placer	-	-	-	-	-	-	-	-	-	-
Plumas	-	-	-	-	-	-	-	-	-	-
Riverside	-	-	-	-	-	-	-	-	-	-
Sacramento	-	-	-	-	-	-	-	-	-	-
San Benito	-	-	-	-	-	-	-	-	-	-
San Bernardino	-	-	-	-	-	-	-	-	-	-
San Diego	-	-	-	-	-	-	-	-	-	-
San Joaquin	-	-	-	-	-	-	-	-	-	-
San Luis Obispo	-	9,411	-	-	-	-	-	-	-	9,411
San Mateo	-	-	-	-	-	-	-	-	-	-
Santa Barbara	-	-	-	-	-	-	-	-	-	-
Santa Clara	-	2,221	-	-	-	-	-	-	-	2,221
Santa Cruz	-	-	-	-	-	-	-	-	-	-
Shasta	-	-	-	-	-	-	-	-	-	-
Sierra	-	-	-	-	-	-	-	-	-	-
Siskiyou	-	-	-	-	-	-	-	-	-	-
Solano	-	1,467	-	-	-	-	-	-	-	1,467
Sonoma	-	-	-	-	-	-	-	-	-	-
Stanislaus	251	111	-	-	-	-	-	-	-	363
Sutter	-	-	-	-	-	-	-	-	-	-
Tehama	-	8	-	-	-	-	-	-	-	8
Trinity	-	-	-	-	-	-	-	-	-	-
Tulare	1,164	10	-	-	-	-	-	-	-	1,174
Tuolumne	-	-	-	-	-	-	-	-	-	-
Ventura	-	10	-	-	-	-	-	-	-	10
Yolo	748	30	-	-	-	-	-	-	-	778
Cities										
Camarillo	-	-	-	-	-	-	-	-	-	-
Hayward	-	-	-	-	-	-	-	-	-	-
Menlo Park	-	-	-	-	-	-	-	-	-	-
Newark	-	-	-	-	-	-	-	-	-	-
Palo Alto	-	-	-	-	-	-	-	-	-	-
Perris	-	-	-	-	-	-	-	-	-	-
RedLands	-	-	-	-	-	-	-	-	-	-
Totals										
Counties	22,105	18,568	-	-	12,808	599	-	-	-	54,081
Cities	-	-	-	-	-	-	-	-	-	-
Grand Totals	22,105	18,568	-	-	12,808	599	-	-	-	54,081

*Includes both continuing term and nonrenewal contracts.

City Annexations (Acres)

Participating Local Jurisdictions	2002									
	Land Conservation Act*		Farmland Security Zone*				Agricultural Conservation Easement		Other Enforceable Restriction	TOTAL
	Prime	Nonprime	Urban		Non-Urban		Prime	Nonprime		
			Prime	Nonprime	Prime	Nonprime				
Counties										
Alameda	-	102	-	-	-	-	-	-	-	102
Amador	-	-	-	-	-	-	-	-	-	-
Butte	-	-	-	-	-	-	-	-	-	-
Calaveras	-	-	-	-	-	-	-	-	-	-
Colusa	-	-	-	-	-	-	-	-	-	-
Contra Costa	-	-	-	-	-	-	-	-	-	-
El Dorado	-	-	-	-	-	-	-	-	-	-
Fresno	156	15	-	-	-	-	-	-	-	171
Glenn	-	-	-	-	-	-	-	-	-	-
Humboldt	-	-	-	-	-	-	-	-	-	-
Imperial	-	-	-	-	-	-	-	-	-	-
Kern	453	-	-	-	-	-	-	-	-	453
Kings	139	-	-	-	-	-	-	-	-	139
Lake	-	-	-	-	-	-	-	-	-	-
Lassen	-	-	-	-	-	-	-	-	-	-
Los Angeles	-	-	-	-	-	-	-	-	-	-
Madera	16	-	-	-	-	-	-	-	-	16
Marin	-	-	-	-	-	-	-	-	-	-
Mariposa	-	-	-	-	-	-	-	-	-	-
Mendocino	-	-	-	-	-	-	-	-	-	-
Merced	-	-	-	-	-	-	-	-	-	-
Modoc	-	-	-	-	-	-	-	-	-	-
Mono	-	-	-	-	-	-	-	-	-	-
Monterey	-	-	-	-	-	-	-	-	-	-
Napa	-	-	-	-	-	-	-	-	-	-
Nevada	-	-	-	-	-	-	-	-	-	-
Orange	-	-	-	-	-	-	-	-	-	-
Placer	-	-	-	-	-	-	-	-	-	-
Plumas	-	-	-	-	-	-	-	-	-	-
Riverside	429	188	-	-	-	-	-	-	-	617
Sacramento	-	-	-	-	-	-	-	-	-	-
San Benito	-	-	-	-	-	-	-	-	-	-
San Bernardino	-	-	-	-	-	-	-	-	-	-
San Diego	-	-	-	-	-	-	-	-	-	-
San Joaquin	10	-	-	-	-	-	-	-	-	10
San Luis Obispo	-	-	-	-	-	-	-	-	-	-
San Mateo	-	-	-	-	-	-	-	-	-	-
Santa Barbara	-	-	-	-	-	-	-	-	-	-
Santa Clara	25	1,352	-	-	-	-	-	-	-	1,377
Santa Cruz	-	-	-	-	-	-	-	-	-	-
Shasta	-	-	-	-	-	-	-	-	-	-
Sierra	-	-	-	-	-	-	-	-	-	-
Siskiyou	-	-	-	-	-	-	-	-	-	-
Solano	-	-	-	-	-	-	-	-	-	-
Sonoma	-	-	-	-	-	-	-	-	-	-
Stanislaus	178	-	-	-	-	-	-	-	-	178
Sutter	-	-	-	-	-	-	-	-	-	-
Tehama	-	-	-	-	-	-	-	-	-	-
Trinity	-	-	-	-	-	-	-	-	-	-
Tulare	415	-	-	-	-	-	-	-	-	415
Tuolumne	-	-	-	-	-	-	-	-	-	-
Ventura	-	-	-	-	-	-	-	-	-	-
Yolo	-	-	-	-	-	-	-	-	-	-
Cities										
Camarillo	-	-	-	-	-	-	-	-	-	-
Hayward	-	-	-	-	-	-	-	-	-	-
Menlo Park	-	-	-	-	-	-	-	-	-	-
Newark	-	-	-	-	-	-	-	-	-	-
Palo Alto	-	-	-	-	-	-	-	-	-	-
Perris	-	-	-	-	-	-	-	-	-	-
RedLands	-	-	-	-	-	-	-	-	-	-
Totals										
Counties	1,820	1,658	-	-	-	-	-	-	-	3,477
Cities	-	-	-	-	-	-	-	-	-	-
Grand Totals	1,820	1,658	-	-	-	-	-	-	-	3,477

*Includes both continuing term and nonrenewal contracts.

City Annexations (Acres)

Participating Local Jurisdictions	2003									
	Land Conservation Act*		Farmland Security Zone*				Agricultural Conservation Easement		Other Enforceable Restriction	TOTAL
	Prime	Nonprime	Urban		Non-Urban		Prime	Nonprime		
			Prime	Nonprime	Prime	Nonprime				
Counties										
Alameda	-	505	-	-	-	-	-	-	-	505
Amador	-	-	-	-	-	-	-	-	-	-
Butte	-	-	-	-	-	-	-	-	-	-
Calaveras	-	-	-	-	-	-	-	-	-	-
Colusa	-	-	-	-	-	-	-	-	-	-
Contra Costa	-	-	-	-	-	-	-	-	-	-
El Dorado	-	-	-	-	-	-	-	-	-	-
Fresno	-	-	-	-	-	-	-	-	-	-
Glenn	-	-	-	-	-	-	-	-	-	-
Humboldt	-	-	-	-	-	-	-	-	-	-
Imperial	-	-	-	-	-	-	-	-	-	-
Kern	-	-	-	-	-	-	-	-	-	-
Kings	152	-	-	-	-	-	-	-	-	152
Lake	-	-	-	-	-	-	-	-	-	-
Lassen	-	-	-	-	-	-	-	-	-	-
Los Angeles	-	-	-	-	-	-	-	-	-	-
Madera	-	-	-	-	-	-	-	-	-	-
Marin	-	-	-	-	-	-	-	-	-	-
Mariposa	-	-	-	-	-	-	-	-	-	-
Mendocino	-	-	-	-	-	-	-	-	-	-
Merced	-	-	-	-	-	-	-	-	-	-
Modoc	-	-	-	-	-	-	-	-	-	-
Mono	-	-	-	-	-	-	-	-	-	-
Monterey	-	-	-	-	-	-	-	-	-	-
Napa	-	-	-	-	-	-	-	-	-	-
Nevada	-	-	-	-	-	-	-	-	-	-
Orange	-	-	-	-	-	-	-	-	-	-
Placer	-	-	-	-	-	-	-	-	-	-
Plumas	-	1,865	-	-	-	-	-	-	-	1,865
Riverside	195	-	-	-	-	-	-	-	-	195
Sacramento	-	-	-	-	-	-	-	-	-	-
San Benito	-	-	-	-	-	-	-	-	-	-
San Bernardino	-	-	-	-	-	-	-	-	-	-
San Diego	-	-	-	-	-	-	-	-	-	-
San Joaquin	20	-	-	-	-	-	-	-	-	20
San Luis Obispo	-	-	-	-	-	-	-	-	-	-
San Mateo	-	-	-	-	-	-	-	-	-	-
Santa Barbara	-	-	-	-	-	-	-	-	-	-
Santa Clara	-	-	-	-	-	-	-	-	-	-
Santa Cruz	-	-	-	-	-	-	-	-	-	-
Shasta	-	-	-	-	-	-	-	-	-	-
Sierra	-	-	-	-	-	-	-	-	-	-
Siskiyou	-	-	-	-	-	-	-	-	-	-
Solano	-	31	-	-	-	-	-	-	-	31
Sonoma	-	-	-	-	-	-	-	-	-	-
Stanislaus	43	-	-	-	-	-	-	-	-	43
Sutter	-	-	-	-	-	-	-	-	-	-
Tehama	-	-	-	-	-	-	-	-	-	-
Trinity	-	-	-	-	-	-	-	-	-	-
Tulare	289	-	-	-	-	-	-	-	-	289
Tuolumne	-	-	-	-	-	-	-	-	-	-
Ventura	-	-	-	-	-	-	-	-	-	-
Yolo	-	-	-	-	-	-	-	-	-	-
Cities										
Camarillo	-	-	-	-	-	-	-	-	-	-
Hayward	-	-	-	-	-	-	-	-	-	-
Menlo Park	-	-	-	-	-	-	-	-	-	-
Newark	-	-	-	-	-	-	-	-	-	-
Palo Alto	-	-	-	-	-	-	-	-	-	-
Perris	-	-	-	-	-	-	-	-	-	-
RedLands	-	-	-	-	-	-	-	-	-	-
Totals										
Counties	699	2,402	-	-	-	-	-	-	-	3,101
Cities	-	-	-	-	-	-	-	-	-	-
Grand Totals	699	2,402	-	-	-	-	-	-	-	3,101

*Includes both continuing term and nonrenewal contracts.

Williamson Act Easement Exchanges (Acres)

Participating Local Jurisdictions	2002				2003			
	Land Conservation Act*		Other Enforceable Restriction	TOTAL	Land Conservation Act*		Other Enforceable Restriction	TOTAL
	Prime	Nonprime			Prime	Nonprime		
Counties								
Alameda	-	-	-	-	-	-	-	-
Amador	-	-	-	-	-	-	-	-
Butte	-	-	-	-	-	-	-	-
Calaveras	-	-	-	-	-	-	-	-
Colusa	-	-	-	-	-	-	-	-
Contra Costa	-	-	-	-	-	-	-	-
El Dorado	-	-	-	-	-	-	-	-
Fresno	-	-	-	-	-	-	-	-
Glenn	-	-	-	-	-	-	-	-
Humboldt	-	-	-	-	-	-	-	-
Imperial	-	-	-	-	-	-	-	-
Kern	-	-	-	-	-	-	-	-
Kings	-	-	-	-	-	-	-	-
Lake	-	-	-	-	-	-	-	-
Lassen	-	-	-	-	-	-	-	-
Los Angeles	-	-	-	-	-	-	-	-
Madera	-	-	-	-	-	-	-	-
Marin	-	-	-	-	-	-	-	-
Mariposa	-	-	-	-	-	-	-	-
Mendocino	-	-	-	-	-	-	-	-
Merced	-	-	-	-	-	-	-	-
Modoc	-	-	-	-	-	-	-	-
Mono	-	-	-	-	-	-	-	-
Monterey	-	-	-	-	-	-	-	-
Napa	-	-	-	-	-	-	-	-
Nevada	-	-	-	-	-	-	-	-
Orange	-	-	-	-	-	-	-	-
Placer	-	-	-	-	-	-	-	-
Plumas	-	-	-	-	-	-	-	-
Riverside	367	68	-	435	-	-	-	-
Sacramento	-	-	-	-	-	-	-	-
San Benito	-	-	-	-	-	-	-	-
San Bernardino	-	-	-	-	-	-	-	-
San Diego	-	-	-	-	-	-	-	-
San Joaquin	-	-	-	-	-	-	-	-
San Luis Obispo	-	-	-	-	-	-	-	-
San Mateo	-	-	-	-	-	-	-	-
Santa Barbara	-	-	-	-	-	-	-	-
Santa Clara	-	-	-	-	-	-	-	-
Santa Cruz	-	-	-	-	-	-	-	-
Shasta	-	-	-	-	-	-	-	-
Sierra	-	-	-	-	-	-	-	-
Siskiyou	-	-	-	-	-	-	-	-
Solano	-	-	-	-	-	-	-	-
Sonoma	-	-	-	-	-	-	-	-
Stanislaus	-	-	-	-	-	-	-	-
Sutter	-	-	-	-	-	-	-	-
Tehama	-	-	-	-	-	-	-	-
Trinity	-	-	-	-	-	-	-	-
Tulare	-	-	-	-	-	-	-	-
Tuolumne	-	-	-	-	-	-	-	-
Ventura	-	-	-	-	-	-	-	-
Yolo	-	-	-	-	-	-	-	-
Cities								
Camarillo	-	-	-	-	-	-	-	-
Hayward	-	-	-	-	-	-	-	-
Menlo Park	-	-	-	-	-	-	-	-
Newark	-	-	-	-	-	-	-	-
Palo Alto	-	-	-	-	-	-	-	-
Perris	-	-	-	-	-	-	-	-
RedLands	-	-	-	-	-	-	-	-
Totals								
Counties	367	68	-	435	-	-	-	-
Cities	-	-	-	-	-	-	-	-
Grand Totals	367	68	-	435	-	-	-	-

*Includes both continuing term and nonrenewal contracts.

Net Adjustments (Acres)

Participating Local Jurisdictions	2002									
	Land Conservation Act*		Farmland Security Zone*				Agricultural Conservation Easement		Other Enforceable Restriction	TOTAL
	Prime	Nonprime	Urban		Non-Urban		Prime	Nonprime		
			Prime	Nonprime	Prime	Nonprime				
Counties										
Alameda	(68)	39	-	-	-	-	-	-	-	(30)
Amador	-	-	-	-	-	-	-	-	-	-
Butte	(628)	356	-	-	-	-	-	-	-	(271)
Calaveras	349	(3,575)	-	-	-	-	-	-	(966)	(4,192)
Colusa	-	30	-	-	(606)	606	-	-	-	30
Contra Costa	-	7	-	-	-	-	-	-	-	7
El Dorado	-	-	-	-	-	-	-	-	-	-
Fresno	(1,468)	1,139	-	-	-	-	-	-	-	(329)
Glenn	119	(119)	-	-	-	-	-	-	-	-
Humboldt	-	-	-	-	-	-	-	-	-	-
Imperial	6,039	(6,602)	-	-	-	-	-	-	-	(564)
Kern	(82,512)	79,946	-	-	68	-	-	-	-	(2,498)
Kings	-	-	-	-	-	-	-	-	-	-
Lake	15	141	-	-	-	-	-	-	-	157
Lassen	-	(3,310)	-	-	-	-	-	-	-	(3,310)
Los Angeles	-	-	-	-	-	-	-	-	-	-
Madera	(371)	(434)	10	(10)	120	(120)	-	-	-	(804)
Marin	-	(4,004)	-	-	-	-	-	-	-	(4,004)
Mariposa	-	(18)	-	-	-	-	-	-	-	(18)
Mendocino	885	(2,268)	-	-	-	-	-	-	-	(1,383)
Merced	34	(65)	-	-	-	-	-	-	-	(31)
Modoc	-	-	-	-	-	-	-	-	-	-
Mono	-	-	-	-	-	-	-	-	-	-
Monterey	-	-	-	-	-	-	-	-	-	-
Napa	248	36	-	-	-	-	-	-	-	285
Nevada	(1)	(1)	-	-	-	-	-	-	-	(2)
Orange	106	(111)	-	-	-	-	-	-	-	(5)
Placer	(98)	98	-	-	-	-	-	-	-	-
Plumas	-	-	-	-	-	-	-	-	-	-
Riverside	(88)	31	-	-	-	-	-	-	-	(58)
Sacramento	(2)	-	-	-	-	-	-	-	-	(2)
San Benito	(107)	(3)	-	-	-	-	-	-	-	(110)
San Bernardino	(411)	274	-	-	-	-	-	-	-	(137)
San Diego	227	5,087	-	-	-	-	-	-	-	5,314
San Joaquin	958	(955)	-	-	-	-	-	-	-	3
San Luis Obispo	44	696	-	-	-	-	-	-	-	740
San Mateo	-	-	-	-	-	-	-	-	-	-
Santa Barbara	599	(882)	-	-	-	-	-	-	-	(283)
Santa Clara	121	(3,909)	-	-	-	-	-	-	-	(3,788)
Santa Cruz	-	(139)	-	-	-	-	-	-	-	(139)
Shasta	-	-	-	-	-	-	-	-	-	-
Sierra	-	27	-	-	-	-	-	-	-	27
Siskiyou	-	-	-	-	-	-	-	-	-	-
Solano	1,792	(1,804)	-	-	-	-	-	-	-	(12)
Sonoma	-	-	-	-	-	-	-	-	-	-
Stanislaus	1,409	(1,734)	-	-	-	-	-	-	-	(325)
Sutter	-	-	-	-	-	-	-	-	-	-
Tehama	227	(231)	-	-	-	-	-	-	-	(4)
Trinity	-	-	-	-	-	-	-	-	-	-
Tulare	-	-	-	-	-	-	-	-	-	-
Tuolumne	-	103	-	-	-	-	-	-	-	103
Ventura	61	(39)	(153)	(41)	167	25	-	-	-	20
Yolo	1,106	(472)	-	-	-	-	61	-	(61)	634
Cities										
Camarillo	-	-	-	-	-	-	-	-	-	-
Hayward	-	-	-	-	-	-	-	-	-	-
Menlo Park	-	-	-	-	-	-	-	-	-	-
Newark	-	-	-	-	-	-	-	-	-	-
Palo Alto	-	-	-	-	-	-	-	-	-	-
Perris	-	-	-	-	-	-	-	-	-	-
RedLands	-	-	-	-	-	-	-	-	-	-
Totals										
Counties	(71,411)	57,331	(143)	(51)	(252)	511	61	0	(1,026)	(14,981)
Cities	0	0	0	0	0	0	0	0	0	0
Grand Totals	(71,411)	57,331	(143)	(51)	(252)	511	61	0	(1,026)	(14,981)

*Includes both continuing term and nonrenewal contracts.

Net Adjustments (Acres)

Participating Local Jurisdictions	2003									
	Land Conservation Act*		Farmland Security Zone*				Agricultural Conservation Easement		Other Enforceable Restriction	TOTAL
	Prime	Nonprime	Urban		Non-Urban		Prime	Nonprime		
			Prime	Nonprime	Prime	Nonprime				
Counties										
Alameda	(145)	(15)	-	-	-	-	-	-	-	(160)
Amador	(617)	2,088	-	-	-	-	-	-	-	1,471
Butte	63	(142)	-	-	-	-	-	-	-	(80)
Calaveras	122	(234)	-	-	-	-	-	-	-	(112)
Colusa	344	(344)	-	-	-	-	-	-	-	-
Contra Costa	(2)	(115)	-	-	-	-	-	-	-	(117)
El Dorado	-	-	-	-	-	-	-	-	-	-
Fresno	(414)	486	-	-	100	(100)	-	-	-	73
Glenn	264	(335)	-	-	11	-	-	-	-	(59)
Humboldt	64	(62)	-	-	-	-	-	-	-	2
Imperial	-	-	-	-	-	-	-	-	-	-
Kern	(7,636)	8,040	(3,708)	-	3,708	-	-	-	-	404
Kings	5	-	-	-	-	-	-	-	-	5
Lake	7	1,312	-	-	-	-	-	-	-	1,319
Lassen	(11,880)	14,952	(110)	144	(7)	(14)	-	-	-	3,084
Los Angeles	-	-	-	-	-	-	-	-	-	-
Madera	3,124	(3,160)	-	-	41	(41)	-	-	-	(35)
Marin	(13,052)	11,870	-	(13,279)	290	15,352	-	-	-	1,180
Mariposa	-	-	-	-	-	-	-	-	-	-
Mendocino	31	280	-	-	-	-	-	-	-	312
Merced	(130)	113	-	-	-	-	-	-	-	(17)
Modoc	-	-	-	-	-	-	-	-	-	-
Mono	-	-	-	-	-	-	-	-	-	-
Monterey	-	-	-	-	-	-	-	-	-	-
Napa	(315)	(203)	-	-	-	-	-	-	-	(518)
Nevada	-	-	-	-	-	-	-	-	-	-
Orange	-	12	-	-	-	-	-	-	-	12
Placer	139	23	-	-	-	-	-	-	-	162
Plumas	-	-	-	-	-	-	-	-	-	-
Riverside	(321)	144	-	-	-	-	-	-	-	(177)
Sacramento	(1)	2	-	-	-	-	-	-	-	1
San Benito	(20)	40	-	-	-	-	-	-	-	20
San Bernardino	-	(1)	-	-	-	-	-	-	-	(1)
San Diego	-	68	-	-	-	-	-	-	-	68
San Joaquin	126	(42)	-	-	-	-	-	-	-	84
San Luis Obispo	171	614	-	-	-	-	-	-	-	785
San Mateo	-	-	-	-	-	-	-	-	-	-
Santa Barbara	302	(458)	-	-	-	-	-	-	-	(155)
Santa Clara	(55)	2,424	-	-	-	-	-	-	-	2,369
Santa Cruz	-	-	-	-	-	-	-	-	-	-
Shasta	-	(545)	-	-	-	-	-	-	-	(545)
Sierra	-	(15)	-	-	-	-	-	-	-	(15)
Siskiyou	(1)	(14)	-	-	-	-	-	-	-	(15)
Solano	(312)	304	-	-	-	-	-	-	-	(8)
Sonoma	13	-	-	-	-	-	-	-	-	13
Stanislaus	643	(915)	-	-	-	-	-	-	-	(272)
Sutter	-	-	-	-	-	-	-	-	-	-
Tehama	806	(792)	-	-	-	-	-	-	-	15
Trinity	-	-	-	-	-	-	-	-	-	-
Tulare	-	-	-	-	-	-	-	-	-	-
Tuolumne	-	(30)	-	-	-	-	-	-	-	(30)
Ventura	96	(100)	-	-	-	-	-	-	-	(5)
Yolo	(967)	(525)	-	-	-	-	-	-	-	(1,492)
Cities										
Camarillo	-	-	-	-	-	-	-	-	-	-
Hayward	-	-	-	-	-	-	-	-	-	-
Menlo Park	-	-	-	-	-	-	-	-	-	-
Newark	-	-	-	-	-	-	-	-	-	-
Palo Alto	-	-	-	-	-	-	-	-	-	-
Perris	-	-	-	-	-	-	-	-	-	-
RedLands	-	-	-	-	-	-	-	-	-	-
Totals										
Counties	(29,547)	34,727	(3,818)	(13,135)	4,143	15,196	0	0	0	7,566
Cities	0	0	0	0	0	0	0	0	0	0
Grand Totals	(29,547)	34,727	(3,818)	(13,135)	4,143	15,196	0	0	0	7,566

*Includes both continuing term and nonrenewal contracts.

Contracted Land not Receiving Tax Relief Benefits (Acres)*

Participating Local Jurisdictions	2002									
	Land Conservation Act		Farmland Security Zone				Agricultural Conservation Easement		Other Enforceable Restriction	TOTAL
	Prime	Nonprime	Urban		Non-Urban		Prime	Nonprime		
			Prime	Nonprime	Prime	Nonprime				
Counties										
Alameda	-	12,561	-	-	-	-	-	-	-	12,561
Amador	-	-	-	-	-	-	-	-	-	-
Butte	-	-	-	-	-	-	-	-	-	-
Calaveras	-	-	-	-	-	-	-	-	-	-
Colusa	490	190	-	-	-	-	-	-	-	680
Contra Costa	2,565	1,858	-	-	-	-	-	-	-	4,423
El Dorado	-	-	-	-	-	-	-	-	-	-
Fresno	47,241	7,286	-	-	-	-	-	-	-	54,528
Glenn	-	-	-	-	-	-	-	-	-	-
Humboldt	10	286	-	-	-	-	-	-	-	296
Imperial	-	-	-	-	-	-	-	-	-	-
Kern	-	-	-	-	-	-	-	-	-	-
Kings	19,921	2,639	-	-	-	-	-	-	-	22,561
Lake	379	72	-	-	-	-	-	-	-	451
Lassen	-	-	-	-	-	-	-	-	-	-
Los Angeles	-	-	-	-	-	-	-	-	-	-
Madera	27,486	1,488	-	-	-	-	-	-	-	28,973
Marin	-	-	-	-	-	-	-	-	-	-
Mariposa	-	-	-	-	-	-	-	-	-	-
Mendocino	-	-	-	-	-	-	-	-	-	-
Merced	779	-	-	-	-	-	-	-	-	779
Modoc	-	-	-	-	-	-	-	-	-	-
Mono	-	-	-	-	-	-	-	-	-	-
Monterey	44,034	7,145	-	-	-	-	-	-	-	51,178
Napa	10,283	7,484	-	-	-	-	-	-	-	17,767
Nevada	300	-	-	-	-	-	-	-	-	300
Orange	-	-	-	-	-	-	-	-	-	-
Placer	691	42	-	-	-	-	-	-	-	733
Plumas	-	-	-	-	-	-	-	-	-	-
Riverside	1,945	107	-	-	-	-	-	-	-	2,052
Sacramento	-	-	-	-	-	-	-	-	-	-
San Benito	3,153	277	-	-	-	-	-	-	-	3,430
San Bernardino	-	-	-	-	-	-	-	-	-	-
San Diego	-	-	-	-	-	-	-	-	-	-
San Joaquin	3,467	11,775	-	-	-	-	-	-	-	15,242
San Luis Obispo	1,332	3,254	-	-	-	-	-	-	-	4,586
San Mateo	-	-	-	-	-	-	-	-	-	-
Santa Barbara	20,400	5,942	-	-	-	-	-	-	-	26,343
Santa Clara	-	-	-	-	-	-	-	-	-	-
Santa Cruz	624	1,224	-	-	-	-	-	-	-	1,848
Shasta	-	-	-	-	-	-	-	-	-	-
Sierra	-	144	-	-	-	-	-	-	-	144
Siskiyou	-	1,270	-	-	-	-	-	-	-	1,270
Solano	1,699	2,183	-	-	-	-	-	-	-	3,882
Sonoma	-	-	-	-	-	-	-	-	-	-
Stanislaus	15,383	3,344	-	-	-	-	-	-	-	18,727
Sutter	-	-	-	-	-	-	-	-	-	-
Tehama	4,527	1,816	-	-	-	-	-	-	-	6,343
Trinity	-	387	-	-	-	-	-	-	-	387
Tulare	160	6	-	-	-	-	-	-	-	166
Tuolumne	-	-	-	-	-	-	-	-	-	-
Ventura	-	-	-	-	-	-	-	-	-	-
Yolo	5,317	2,366	-	-	-	-	-	-	-	7,683
Cities										
Camarillo	-	-	-	-	-	-	-	-	-	-
Hayward	-	-	-	-	-	-	-	-	-	-
Menlo Park	-	-	-	-	-	-	-	-	-	-
Newark	-	-	-	-	-	-	-	-	-	-
Palo Alto	-	-	-	-	-	-	-	-	-	-
Perris	-	-	-	-	-	-	-	-	-	-
RedLands	37	-	-	-	-	-	-	-	-	37
Totals										
Counties	212,186	75,146	-	-	-	-	-	-	-	287,332
Cities	37	-	-	-	-	-	-	-	-	37
Grand Totals	212,223	75,146	-	-	-	-	-	-	-	287,369

*Land assessed at a lower value for property taxes under Revenue and Taxation Code Section 110.1 (Proposition 13 provisions) than under Revenue and Taxation Code Sections 423, 423.3, or 423.5 (Williamson Act valuation provisions).

Contracted Land not Receiving Tax Relief Benefits (Acres)*

Participating Local Jurisdictions	2003									
	Land Conservation Act		Farmland Security Zone				Agricultural Conservation Easement		Other Enforceable Restriction	TOTAL
	Prime	Nonprime	Urban		Non-Urban		Prime	Nonprime		
			Prime	Nonprime	Prime	Nonprime				
Counties										
Alameda	-	11,397	-	-	-	-	-	-	-	11,397
Amador	-	-	-	-	-	-	-	-	-	-
Butte	-	-	-	-	-	-	-	-	-	-
Calaveras	-	-	-	-	-	-	-	-	-	-
Colusa	40	-	-	-	-	-	-	-	-	40
Contra Costa	2,565	1,819	-	-	-	-	-	-	-	4,384
El Dorado	-	-	-	-	-	-	-	-	-	-
Fresno	18,880	641	-	-	-	-	-	-	-	19,521
Glenn	-	-	-	-	-	-	-	-	-	-
Humboldt	-	-	-	-	-	-	-	-	-	-
Imperial	-	-	-	-	-	-	-	-	-	-
Kern	-	-	-	-	-	-	-	-	-	-
Kings	33,155	2,977	-	-	-	-	-	-	-	36,131
Lake	312	330	-	-	-	-	-	-	-	641
Lassen	-	-	-	-	-	-	-	-	-	-
Los Angeles	-	-	-	-	-	-	-	-	-	-
Madera	27,386	2,371	-	-	-	-	-	-	-	29,758
Marin	-	-	-	-	-	-	-	-	-	-
Mariposa	-	-	-	-	-	-	-	-	-	-
Mendocino	-	-	-	-	-	-	-	-	-	-
Merced	580	-	-	-	-	-	-	-	-	580
Modoc	-	-	-	-	-	-	-	-	-	-
Mono	-	-	-	-	-	-	-	-	-	-
Monterey	38,235	6,366	-	-	-	-	-	-	-	44,600
Napa	9,866	7,362	-	-	-	-	-	-	-	17,228
Nevada	330	-	-	-	-	-	-	-	-	330
Orange	-	-	-	-	-	-	-	-	-	-
Placer	488	56	-	-	-	-	-	-	-	544
Plumas	-	-	-	-	-	-	-	-	-	-
Riverside	2,273	96	-	-	-	-	-	-	-	2,369
Sacramento	-	-	-	-	-	-	-	-	-	-
San Benito	3,297	257	-	-	-	-	-	-	-	3,554
San Bernardino	-	-	-	-	-	-	-	-	-	-
San Diego	-	-	-	-	-	-	-	-	-	-
San Joaquin	3,388	11,508	-	-	-	-	-	-	-	14,896
San Luis Obispo	2,512	1,776	-	-	-	-	-	-	-	4,287
San Mateo	-	-	-	-	-	-	-	-	-	-
Santa Barbara	20,657	6,496	-	-	-	-	-	-	-	27,153
Santa Clara	-	-	-	-	-	-	-	-	-	-
Santa Cruz	624	1,224	-	-	-	-	-	-	-	1,848
Shasta	-	-	-	-	-	-	-	-	-	-
Sierra	-	453	-	-	-	-	-	-	-	453
Siskiyou	6	472	-	-	-	-	-	-	-	478
Solano	1,453	7,378	-	-	-	-	-	-	-	8,830
Sonoma	-	-	-	-	-	-	-	-	-	-
Stanislaus	22,672	6,095	-	-	-	-	-	-	-	28,767
Sutter	-	-	-	-	-	-	-	-	-	-
Tehama	5,836	2,639	-	-	-	-	-	-	-	8,474
Trinity	-	-	-	-	-	-	-	-	-	-
Tulare	184	18	-	-	-	-	-	-	-	201
Tuolumne	-	-	-	-	-	-	-	-	-	-
Ventura	-	-	-	-	-	-	-	-	-	-
Yolo	13,585	2,890	-	-	-	-	-	-	-	16,475
Cities										
Camarillo	-	-	-	-	-	-	-	-	-	-
Hayward	-	-	-	-	-	-	-	-	-	-
Menlo Park	-	-	-	-	-	-	-	-	-	-
Newark	-	-	-	-	-	-	-	-	-	-
Palo Alto	-	-	-	-	-	-	-	-	-	-
Perris	-	-	-	-	-	-	-	-	-	-
RedLands	-	-	-	-	-	-	-	-	-	-
Totals										
Counties	208,322	74,619	-	-	-	-	-	-	-	282,942
Cities	-	-	-	-	-	-	-	-	-	-
Grand Totals	208,322	74,619	-	-	-	-	-	-	-	282,942

*Land assessed at a lower value for property taxes under Revenue and Taxation Code Section 110.1 (Proposition 13 provisions) than under Revenue and Taxation Code Sections 423, 423.3, or 423.5 (Williamson Act valuation provisions).

Acres Eligible for Open Space Subvention Payment

Participating Local Jurisdictions	2002									
	Land Conservation Act		Farmland Security Zone				Agricultural Conservation Easement		Other Enforceable Restriction	TOTAL
	Prime	Nonprime	Urban		Non-Urban		Prime	Nonprime		
			Prime	Nonprime	Prime	Nonprime				
Counties										
Alameda	9,109	112,016	-	-	-	-	-	-	-	121,125
Amador	5,667	86,134	-	-	-	-	-	-	-	91,801
Butte	109,104	101,821	-	-	-	-	-	-	-	210,925
Calaveras	16,321	115,883	-	-	-	-	-	-	-	132,203
Colusa	61,602	195,124	12,823	594	36,069	2,324	-	-	-	308,535
Contra Costa	7,001	36,064	-	-	-	-	-	-	-	43,065
El Dorado	2,014	32,481	-	-	5	180	-	-	-	34,681
Fresno	1,016,503	477,156	-	-	12,576	3,363	-	-	-	1,509,598
Glenn	58,914	266,233	9,573	1,260	62,268	2,287	-	-	-	400,536
Humboldt	4,767	187,271	-	-	-	-	-	-	-	192,038
Imperial	96,215	2,594	-	-	-	-	-	-	-	98,809
Kern	681,280	879,510	23,076	-	106,351	-	-	-	-	1,690,216
Kings	287,547	114,057	28,194	227	238,398	4,661	-	-	-	673,085
Lake	5,423	41,707	-	-	-	-	-	-	-	47,131
Lassen	39,879	261,027	545	-	434	119	-	-	-	302,003
Los Angeles	-	-	-	-	-	-	-	-	40,052	40,052
Madera	180,297	286,091	11,604	377	35,322	1,980	-	-	-	515,671
Marin	14,378	71,058	-	13,279	-	-	-	-	-	98,715
Mariposa	-	202,418	-	-	-	-	-	-	-	202,418
Mendocino	33,453	436,778	-	-	-	-	-	-	-	470,231
Merced	235,929	176,570	-	-	-	-	-	-	-	412,499
Modoc	-	-	-	-	-	-	-	-	-	-
Mono	10,165	-	-	-	-	-	-	-	-	10,165
Monterey	18,023	658,975	5,992	484	9,040	1,586	-	-	-	694,100
Napa	7,306	43,031	-	-	-	-	-	-	-	50,337
Nevada	4,245	470	-	-	-	-	-	-	-	4,715
Orange	467	3,973	-	-	-	-	-	-	-	4,439
Placer	13,676	23,763	-	-	-	-	-	-	-	37,439
Plumas	5,570	68,198	-	-	1,160	3,435	-	-	-	78,363
Riverside	51,284	5,682	-	-	-	-	255	214	-	57,435
Sacramento	87,488	82,821	-	-	-	-	-	-	-	170,309
San Benito	48,218	524,342	-	-	-	-	-	-	-	572,560
San Bernardino	981	4,224	-	-	-	-	-	-	-	5,205
San Diego	4,949	67,609	-	-	-	-	-	-	-	72,558
San Joaquin	324,349	131,389	13,390	-	34,187	10,734	-	-	-	514,049
San Luis Obispo	82,220	714,037	-	-	-	-	-	-	-	796,257
San Mateo	2,978	43,878	-	-	-	-	-	-	-	46,856
Santa Barbara	45,793	470,967	-	-	133	-	-	-	-	516,893
Santa Clara	10,697	313,742	-	-	-	-	-	-	-	324,439
Santa Cruz	2,357	14,906	82	32	-	10	-	-	-	17,386
Shasta	15,932	150,723	-	-	-	-	-	-	-	166,655
Sierra	1,938	35,782	-	799	-	902	-	-	-	39,421
Siskiyou	89,716	315,615	-	-	-	-	-	-	-	405,331
Solano	115,728	138,127	-	-	-	-	-	-	-	253,855
Sonoma	30,005	253,457	-	-	-	-	-	-	18,215	301,676
Stanislaus	268,065	396,906	-	-	-	-	-	-	-	664,971
Sutter	31,265	7,350	-	-	-	-	-	-	-	38,615
Tehama	46,784	734,367	2,655	2,467	1,190	1,128	-	-	-	788,592
Trinity	-	21,644	-	-	-	-	-	-	-	21,644
Tulare	590,352	510,715	9,001	-	-	-	-	-	686	1,110,753
Tuolumne	-	118,147	-	-	-	-	-	-	-	118,147
Ventura	45,152	78,462	1,170	279	377	219	-	-	-	125,660
Yolo	235,492	171,988	-	-	-	-	127	4	-	407,611
Cities										
Camarillo	75	1	-	-	-	-	-	-	-	76
Hayward	-	384	-	-	-	-	-	-	-	384
Menlo Park	-	940	-	-	-	-	-	-	-	940
Newark	-	2,805	-	-	-	-	-	-	-	2,805
Palo Alto	149	304	-	-	-	-	-	-	-	453
Perris	588	-	-	-	-	-	-	-	-	588
RedLands	125	-	-	-	-	-	-	-	-	125
Totals										
Counties	5,056,601	10,187,278	118,106	19,798	537,511	32,928	382	218	58,953	16,011,774
Cities	936	4,434	-	-	-	-	-	-	-	5,370
Grand Totals	5,057,537	10,191,712	118,106	19,798	537,511	32,928	382	218	58,953	16,017,144

Acres Eligible for Open Space Subvention Payment

Participating Local Jurisdictions	2003									
	Land Conservation Act		Farmland Security Zone				Agricultural Conservation Easement		Other Enforceable Restriction	TOTAL
	Prime	Nonprime	Urban		Non-Urban		Prime	Nonprime		
			Prime	Nonprime	Prime	Nonprime				
Counties										
Alameda	9,140	112,788	-	-	-	-	-	-	-	121,928
Amador	5,422	88,949	-	-	-	-	-	-	-	94,371
Butte	111,210	101,572	-	-	-	-	-	-	-	212,782
Calaveras	16,586	114,806	-	-	-	-	-	-	-	131,391
Colusa	61,560	195,457	13,472	610	39,188	2,342	-	-	-	312,629
Contra Costa	6,860	35,858	-	-	-	-	-	-	-	42,718
El Dorado	2,074	32,744	-	-	5	180	-	-	-	35,003
Fresno	1,032,918	485,423	-	-	12,676	3,263	-	-	-	1,534,280
Glenn	58,733	266,261	9,573	1,260	70,035	2,359	-	-	-	408,222
Humboldt	4,840	187,311	-	-	-	-	-	-	-	192,151
Imperial	107,976	3,273	-	-	-	-	-	-	-	111,249
Kern	662,244	884,878	22,198	-	117,441	-	-	-	-	1,686,761
Kings	269,347	113,283	28,354	227	226,378	4,062	-	-	-	641,651
Lake	5,497	42,762	-	-	-	-	-	-	-	48,260
Lassen	17,209	271,567	435	144	11,591	6,713	-	-	-	307,659
Los Angeles	-	-	-	-	-	-	-	-	40,052	40,052
Madera	180,070	283,746	12,121	382	39,023	2,078	328	-	-	517,747
Marin	1,597	83,218	-	-	290	15,749	-	-	-	100,855
Mariposa	-	203,773	-	-	-	-	-	-	-	203,773
Mendocino	33,488	437,366	-	-	-	-	-	-	-	470,853
Merced	239,935	176,803	-	-	-	-	-	-	-	416,738
Modoc	6,972	23,758	-	-	-	-	-	-	-	30,730
Mono	12,607	-	-	-	-	-	-	-	-	12,607
Monterey	19,492	659,902	6,603	562	15,940	6,072	-	-	453	709,023
Napa	7,212	42,936	-	-	-	-	-	-	-	50,148
Nevada	4,774	470	-	-	-	-	-	-	-	5,244
Orange	467	3,985	-	-	-	-	-	-	-	4,452
Placer	13,450	21,208	-	-	-	307	-	-	-	34,965
Plumas	5,570	66,523	-	-	1,160	3,435	-	-	-	76,689
Riverside	50,751	5,854	-	-	-	-	255	214	-	57,073
Sacramento	87,147	84,282	-	-	-	-	-	-	-	171,429
San Benito	48,201	526,976	-	-	-	-	-	-	-	575,177
San Bernardino	873	4,223	-	-	-	-	-	-	-	5,097
San Diego	4,949	67,628	-	-	-	-	-	-	-	72,577
San Joaquin	309,656	131,949	15,026	80	34,291	10,734	-	-	-	501,735
San Luis Obispo	81,841	710,140	-	-	-	-	-	-	-	791,981
San Mateo	2,787	43,974	-	-	-	-	-	-	-	46,761
Santa Barbara	45,499	469,701	-	-	133	-	-	-	-	515,333
Santa Clara	10,644	310,946	-	-	-	-	-	-	-	321,589
Santa Cruz	2,357	14,906	82	32	-	10	-	-	-	17,386
Shasta	15,952	153,176	-	-	-	-	-	-	-	169,128
Sierra	1,938	33,667	-	799	-	2,693	-	-	-	39,097
Siskiyou	90,000	317,507	-	-	-	-	-	-	-	407,508
Solano	115,468	133,071	-	-	-	-	-	-	-	248,539
Sonoma	30,153	253,862	-	-	-	-	-	-	18,215	302,229
Stanislaus	259,700	393,246	-	-	-	-	-	-	-	652,947
Sutter	39,859	11,376	-	-	-	-	-	-	-	51,235
Tehama	46,288	729,174	2,655	2,467	1,190	5,044	-	-	-	786,818
Trinity	-	22,031	-	-	-	-	-	-	-	22,031
Tulare	588,285	511,093	9,039	-	-	-	-	-	686	1,109,102
Tuolumne	-	117,733	-	-	-	-	-	-	-	117,733
Ventura	45,487	78,746	1,394	305	377	219	-	-	-	126,528
Yolo	224,997	170,827	-	-	-	-	127	4	-	395,955
Cities										
Camarillo	75	1	-	-	-	-	-	-	-	76
Hayward	-	384	-	-	-	-	-	-	-	384
Menlo Park	-	940	-	-	-	-	-	-	-	940
Newark	-	2,805	-	-	-	-	-	-	-	2,805
Palo Alto	149	304	-	-	-	-	-	-	-	453
Perris	-	-	-	-	-	-	-	-	-	-
RedLands	-	-	-	-	-	-	-	-	-	-
Totals										
Counties	5,000,081	10,236,706	120,952	6,868	569,717	65,261	-	-	59,406	16,058,990
Cities	224	4,434	-	-	-	-	-	-	-	4,658
Grand Totals	5,000,305	10,241,140	120,952	6,868	569,717	65,261	-	-	59,406	16,063,648

Open Space Subvention Act Payment Claims

Participating Local Jurisdictions	2002									
	Land Conservation Act		Farmland Security Zone				Agricultural Conservation Easement		Other Enforceable Restriction	TOTAL
	Prime	Nonprime	Urban		Non-Urban		Prime	Nonprime		
			Prime	Nonprime	Prime	Nonprime				
Counties										
Alameda	\$ 45,545	\$ 112,016	\$ -	\$ -	\$ -	\$ -	\$ -	\$ -	\$ -	\$ 157,561
Amador	\$ 28,335	\$ 86,134	\$ -	\$ -	\$ -	\$ -	\$ -	\$ -	\$ -	\$ 114,469
Butte	\$ 545,519	\$ 101,821	\$ -	\$ -	\$ -	\$ -	\$ -	\$ -	\$ -	\$ 647,340
Calaveras	\$ 81,605	\$ 115,883	\$ -	\$ -	\$ -	\$ -	\$ -	\$ -	\$ -	\$ 197,487
Colusa	\$ 308,008	\$ 195,124	\$ 102,587	\$ 4,750	\$ 180,344	\$ 2,324	\$ -	\$ -	\$ -	\$ 793,137
Contra Costa	\$ 35,005	\$ 36,064	\$ -	\$ -	\$ -	\$ -	\$ -	\$ -	\$ -	\$ 71,069
El Dorado	\$ 10,072	\$ 32,481	\$ -	\$ -	\$ 25	\$ 180	\$ -	\$ -	\$ -	\$ 42,759
Fresno	\$ 5,082,515	\$ 477,156	\$ -	\$ -	\$ 62,881	\$ 3,363	\$ -	\$ -	\$ -	\$ 5,625,915
Glenn	\$ 294,571	\$ 266,233	\$ 76,588	\$ 10,081	\$ 311,341	\$ 2,287	\$ -	\$ -	\$ -	\$ 961,102
Humboldt	\$ 23,836	\$ 187,271	\$ -	\$ -	\$ -	\$ -	\$ -	\$ -	\$ -	\$ 211,107
Imperial	\$ 481,077	\$ 2,594	\$ -	\$ -	\$ -	\$ -	\$ -	\$ -	\$ -	\$ 483,671
Kern	\$ 3,406,400	\$ 879,510	\$ 184,610	\$ -	\$ 531,753	\$ -	\$ -	\$ -	\$ -	\$ 5,002,271
Kings	\$ 1,437,737	\$ 114,057	\$ 225,553	\$ 1,817	\$ 1,191,990	\$ 4,661	\$ -	\$ -	\$ -	\$ 2,975,814
Lake	\$ 27,117	\$ 41,707	\$ -	\$ -	\$ -	\$ -	\$ -	\$ -	\$ -	\$ 68,825
Lassen	\$ 199,394	\$ 261,027	\$ 4,360	\$ -	\$ 2,170	\$ 119	\$ -	\$ -	\$ -	\$ 467,070
Los Angeles	\$ -	\$ -	\$ -	\$ -	\$ -	\$ -	\$ -	\$ -	\$ 40,052	\$ 40,052
Madera	\$ 901,486	\$ 286,091	\$ 92,831	\$ 3,016	\$ 176,610	\$ 1,980	\$ -	\$ -	\$ -	\$ 1,462,013
Marin	\$ 71,890	\$ 71,058	\$ -	\$ 106,232	\$ -	\$ -	\$ -	\$ -	\$ -	\$ 249,179
Mariposa	\$ -	\$ 202,418	\$ -	\$ -	\$ -	\$ -	\$ -	\$ -	\$ -	\$ 202,418
Mendocino	\$ 167,264	\$ 436,778	\$ -	\$ -	\$ -	\$ -	\$ -	\$ -	\$ -	\$ 604,042
Merced	\$ 1,179,645	\$ 176,570	\$ -	\$ -	\$ -	\$ -	\$ -	\$ -	\$ -	\$ 1,356,215
Modoc	\$ -	\$ -	\$ -	\$ -	\$ -	\$ -	\$ -	\$ -	\$ -	\$ -
Mono	\$ 50,824	\$ -	\$ -	\$ -	\$ -	\$ -	\$ -	\$ -	\$ -	\$ 50,824
Monterey	\$ 90,114	\$ 658,975	\$ 47,940	\$ 3,871	\$ 45,202	\$ 1,586	\$ -	\$ -	\$ -	\$ 847,688
Napa	\$ 36,531	\$ 43,031	\$ -	\$ -	\$ -	\$ -	\$ -	\$ -	\$ -	\$ 79,562
Nevada	\$ 21,226	\$ 470	\$ -	\$ -	\$ -	\$ -	\$ -	\$ -	\$ -	\$ 21,696
Orange	\$ 2,334	\$ 3,973	\$ -	\$ -	\$ -	\$ -	\$ -	\$ -	\$ -	\$ 6,306
Placer	\$ 68,381	\$ 23,763	\$ -	\$ -	\$ -	\$ -	\$ -	\$ -	\$ -	\$ 92,144
Plumas	\$ 27,850	\$ 68,198	\$ -	\$ -	\$ 5,800	\$ 3,435	\$ -	\$ -	\$ -	\$ 105,283
Riverside	\$ 256,422	\$ 5,682	\$ -	\$ -	\$ -	\$ -	\$ 1,275	\$ 214	\$ -	\$ 263,593
Sacramento	\$ 437,438	\$ 82,821	\$ -	\$ -	\$ -	\$ -	\$ -	\$ -	\$ -	\$ 520,260
San Benito	\$ 241,090	\$ 524,342	\$ -	\$ -	\$ -	\$ -	\$ -	\$ -	\$ -	\$ 765,432
San Bernardino	\$ 4,906	\$ 4,224	\$ -	\$ -	\$ -	\$ -	\$ -	\$ -	\$ -	\$ 9,131
San Diego	\$ 24,745	\$ 67,609	\$ -	\$ -	\$ -	\$ -	\$ -	\$ -	\$ -	\$ 92,354
San Joaquin	\$ 1,621,744	\$ 131,389	\$ 107,119	\$ -	\$ 170,936	\$ 10,734	\$ -	\$ -	\$ -	\$ 2,041,921
San Luis Obispo	\$ 411,102	\$ 714,037	\$ -	\$ -	\$ -	\$ -	\$ -	\$ -	\$ -	\$ 1,125,138
San Mateo	\$ 14,891	\$ 43,878	\$ -	\$ -	\$ -	\$ -	\$ -	\$ -	\$ -	\$ 58,768
Santa Barbara	\$ 228,967	\$ 470,967	\$ -	\$ -	\$ 666	\$ -	\$ -	\$ -	\$ -	\$ 700,600
Santa Clara	\$ 53,486	\$ 313,742	\$ -	\$ -	\$ -	\$ -	\$ -	\$ -	\$ -	\$ 367,228
Santa Cruz	\$ 11,783	\$ 14,906	\$ 653	\$ 258	\$ -	\$ 10	\$ -	\$ -	\$ -	\$ 27,609
Shasta	\$ 79,660	\$ 150,723	\$ -	\$ -	\$ -	\$ -	\$ -	\$ -	\$ -	\$ 230,383
Sierra	\$ 9,689	\$ 35,782	\$ -	\$ 6,394	\$ -	\$ 902	\$ -	\$ -	\$ -	\$ 52,766
Siskiyou	\$ 448,581	\$ 315,615	\$ -	\$ -	\$ -	\$ -	\$ -	\$ -	\$ -	\$ 764,196
Solano	\$ 578,641	\$ 138,127	\$ -	\$ -	\$ -	\$ -	\$ -	\$ -	\$ -	\$ 716,768
Sonoma	\$ 150,023	\$ 253,457	\$ -	\$ -	\$ -	\$ -	\$ -	\$ -	\$ 18,215	\$ 421,695
Stanislaus	\$ 1,340,326	\$ 396,906	\$ -	\$ -	\$ -	\$ -	\$ -	\$ -	\$ -	\$ 1,737,231
Sutter	\$ 156,325	\$ 7,350	\$ -	\$ -	\$ -	\$ -	\$ -	\$ -	\$ -	\$ 163,675
Tehama	\$ 233,921	\$ 734,367	\$ 21,242	\$ 19,735	\$ 5,950	\$ 1,128	\$ -	\$ -	\$ -	\$ 1,016,344
Trinity	\$ -	\$ 21,644	\$ -	\$ -	\$ -	\$ -	\$ -	\$ -	\$ -	\$ 21,644
Tulare	\$ 2,951,761	\$ 510,715	\$ 72,005	\$ -	\$ -	\$ -	\$ -	\$ -	\$ 686	\$ 3,535,166
Tuolumne	\$ -	\$ 118,147	\$ -	\$ -	\$ -	\$ -	\$ -	\$ -	\$ -	\$ 118,147
Ventura	\$ 225,761	\$ 78,462	\$ 9,360	\$ 2,234	\$ 1,885	\$ 219	\$ -	\$ -	\$ -	\$ 317,922
Yolo	\$ 1,177,460	\$ 171,988	\$ -	\$ -	\$ -	\$ -	\$ 633	\$ 4	\$ -	\$ 1,350,086
Cities										
Camarillo	\$ 375	\$ 1	\$ -	\$ -	\$ -	\$ -	\$ -	\$ -	\$ -	\$ 376
Hayward	\$ -	\$ 384	\$ -	\$ -	\$ -	\$ -	\$ -	\$ -	\$ -	\$ 384
Menlo Park	\$ -	\$ 940	\$ -	\$ -	\$ -	\$ -	\$ -	\$ -	\$ -	\$ 940
Newark	\$ -	\$ 2,805	\$ -	\$ -	\$ -	\$ -	\$ -	\$ -	\$ -	\$ 2,805
Palo Alto	\$ 745	\$ 304	\$ -	\$ -	\$ -	\$ -	\$ -	\$ -	\$ -	\$ 1,049
Perris	\$ 2,938	\$ -	\$ -	\$ -	\$ -	\$ -	\$ -	\$ -	\$ -	\$ 2,938
RedLands	\$ 624	\$ -	\$ -	\$ -	\$ -	\$ -	\$ -	\$ -	\$ -	\$ 624
Totals										
Counties	\$ 25,283,003	\$ 10,187,278	\$ 944,847	\$ 158,387	\$ 2,687,553	\$ 32,928	\$ 1,908	\$ 218	\$ 58,953	\$ 39,355,075
Cities	\$ 4,682	\$ 4,434	\$ -	\$ -	\$ -	\$ -	\$ -	\$ -	\$ -	\$ 9,116
Grand Totals	\$ 25,287,686	\$ 10,191,712	\$ 944,847	\$ 158,387	\$ 2,687,553	\$ 32,928	\$ 1,908	\$ 218	\$ 58,953	\$ 39,364,191

Open Space Subvention Act Payment Claims

Participating Local Jurisdictions	2003									
	Land Conservation Act		Farmland Security Zone				Agricultural Conservation Easement		Other Enforceable Restriction	TOTAL
	Prime	Nonprime	Urban		Non-Urban		Prime	Nonprime		
			Prime	Nonprime	Prime	Nonprime				
Counties										
Alameda	\$ 45,698	\$ 112,788	\$ -	\$ -	\$ -	\$ -	\$ -	\$ -	\$ -	\$ 158,486
Amador	\$ 27,110	\$ 88,949	\$ -	\$ -	\$ -	\$ -	\$ -	\$ -	\$ -	\$ 116,059
Butte	\$ 556,048	\$ 101,572	\$ -	\$ -	\$ -	\$ -	\$ -	\$ -	\$ -	\$ 657,620
Calaveras	\$ 82,928	\$ 114,806	\$ -	\$ -	\$ -	\$ -	\$ -	\$ -	\$ -	\$ 197,733
Colusa	\$ 307,800	\$ 195,457	\$ 107,775	\$ 4,878	\$ 195,942	\$ 2,342	\$ -	\$ -	\$ -	\$ 814,194
Contra Costa	\$ 34,300	\$ 35,858	\$ -	\$ -	\$ -	\$ -	\$ -	\$ -	\$ -	\$ 70,158
El Dorado	\$ 10,371	\$ 32,744	\$ -	\$ -	\$ 25	\$ 180	\$ -	\$ -	\$ -	\$ 43,320
Fresno	\$ 5,164,591	\$ 485,423	\$ -	\$ -	\$ 63,381	\$ 3,263	\$ -	\$ -	\$ -	\$ 5,716,657
Glenn	\$ 293,664	\$ 266,261	\$ 76,588	\$ 10,081	\$ 350,173	\$ 2,359	\$ -	\$ -	\$ -	\$ 999,127
Humboldt	\$ 24,201	\$ 187,311	\$ -	\$ -	\$ -	\$ -	\$ -	\$ -	\$ -	\$ 211,512
Imperial	\$ 539,879	\$ 3,273	\$ -	\$ -	\$ -	\$ -	\$ -	\$ -	\$ -	\$ 543,152
Kern	\$ 3,311,221	\$ 884,878	\$ 177,581	\$ -	\$ 587,204	\$ -	\$ -	\$ -	\$ -	\$ 4,960,885
Kings	\$ 1,346,736	\$ 113,283	\$ 226,833	\$ 1,817	\$ 1,131,890	\$ 4,062	\$ -	\$ -	\$ -	\$ 2,824,621
Lake	\$ 27,487	\$ 42,762	\$ -	\$ -	\$ -	\$ -	\$ -	\$ -	\$ -	\$ 70,250
Lassen	\$ 86,045	\$ 271,567	\$ 3,480	\$ 1,152	\$ 57,953	\$ 6,713	\$ -	\$ -	\$ -	\$ 426,910
Los Angeles	\$ -	\$ -	\$ -	\$ -	\$ -	\$ -	\$ -	\$ -	\$ 40,052	\$ 40,052
Madera	\$ 900,351	\$ 283,746	\$ 96,971	\$ 3,053	\$ 195,113	\$ 2,078	\$ 1,639	\$ -	\$ -	\$ 1,482,950
Marin	\$ 7,987	\$ 83,218	\$ -	\$ -	\$ 1,450	\$ 15,749	\$ -	\$ -	\$ -	\$ 108,404
Mariposa	\$ -	\$ 203,773	\$ -	\$ -	\$ -	\$ -	\$ -	\$ -	\$ -	\$ 203,773
Mendocino	\$ 167,438	\$ 437,366	\$ -	\$ -	\$ -	\$ -	\$ -	\$ -	\$ -	\$ 604,803
Merced	\$ 1,199,675	\$ 176,803	\$ -	\$ -	\$ -	\$ -	\$ -	\$ -	\$ -	\$ 1,376,478
Modoc	\$ 34,859	\$ 23,758	\$ -	\$ -	\$ -	\$ -	\$ -	\$ -	\$ -	\$ 58,618
Mono	\$ 63,037	\$ -	\$ -	\$ -	\$ -	\$ -	\$ -	\$ -	\$ -	\$ 63,037
Monterey	\$ 97,459	\$ 659,902	\$ 52,826	\$ 4,494	\$ 79,699	\$ 6,072	\$ -	\$ -	\$ 453	\$ 900,906
Napa	\$ 36,061	\$ 42,936	\$ -	\$ -	\$ -	\$ -	\$ -	\$ -	\$ -	\$ 78,996
Nevada	\$ 23,872	\$ 470	\$ -	\$ -	\$ -	\$ -	\$ -	\$ -	\$ -	\$ 24,342
Orange	\$ 2,334	\$ 3,985	\$ -	\$ -	\$ -	\$ -	\$ -	\$ -	\$ -	\$ 6,319
Placer	\$ 67,249	\$ 21,208	\$ -	\$ -	\$ -	\$ 307	\$ -	\$ -	\$ -	\$ 88,764
Plumas	\$ 27,850	\$ 66,523	\$ -	\$ -	\$ 5,800	\$ 3,435	\$ -	\$ -	\$ -	\$ 103,609
Riverside	\$ 253,753	\$ 5,854	\$ -	\$ -	\$ -	\$ -	\$ 1,275	\$ 214	\$ -	\$ 261,095
Sacramento	\$ 435,733	\$ 84,282	\$ -	\$ -	\$ -	\$ -	\$ -	\$ -	\$ -	\$ 520,016
San Benito	\$ 241,005	\$ 526,976	\$ -	\$ -	\$ -	\$ -	\$ -	\$ -	\$ -	\$ 767,981
San Bernardino	\$ 4,367	\$ 4,223	\$ -	\$ -	\$ -	\$ -	\$ -	\$ -	\$ -	\$ 8,590
San Diego	\$ 24,745	\$ 67,628	\$ -	\$ -	\$ -	\$ -	\$ -	\$ -	\$ -	\$ 92,373
San Joaquin	\$ 1,548,278	\$ 131,949	\$ 120,206	\$ 640	\$ 171,453	\$ 10,734	\$ -	\$ -	\$ -	\$ 1,983,260
San Luis Obispo	\$ 409,205	\$ 710,140	\$ -	\$ -	\$ -	\$ -	\$ -	\$ -	\$ -	\$ 1,119,345
San Mateo	\$ 13,936	\$ 43,974	\$ -	\$ -	\$ -	\$ -	\$ -	\$ -	\$ -	\$ 57,909
Santa Barbara	\$ 227,494	\$ 469,701	\$ -	\$ -	\$ 666	\$ -	\$ -	\$ -	\$ -	\$ 697,862
Santa Clara	\$ 53,218	\$ 310,946	\$ -	\$ -	\$ -	\$ -	\$ -	\$ -	\$ -	\$ 364,163
Santa Cruz	\$ 11,783	\$ 14,906	\$ 653	\$ 258	\$ -	\$ 10	\$ -	\$ -	\$ -	\$ 27,609
Shasta	\$ 79,760	\$ 153,176	\$ -	\$ -	\$ -	\$ -	\$ -	\$ -	\$ -	\$ 232,936
Sierra	\$ 9,689	\$ 33,667	\$ -	\$ 6,394	\$ -	\$ 2,693	\$ -	\$ -	\$ -	\$ 52,442
Siskiyou	\$ 450,001	\$ 317,507	\$ -	\$ -	\$ -	\$ -	\$ -	\$ -	\$ -	\$ 767,509
Solano	\$ 577,341	\$ 133,071	\$ -	\$ -	\$ -	\$ -	\$ -	\$ -	\$ -	\$ 710,412
Sonoma	\$ 150,763	\$ 253,862	\$ -	\$ -	\$ -	\$ -	\$ -	\$ -	\$ 18,215	\$ 422,839
Stanislaus	\$ 1,298,502	\$ 393,246	\$ -	\$ -	\$ -	\$ -	\$ -	\$ -	\$ -	\$ 1,691,748
Sutter	\$ 199,293	\$ 11,376	\$ -	\$ -	\$ -	\$ -	\$ -	\$ -	\$ -	\$ 210,670
Tehama	\$ 231,441	\$ 729,174	\$ 21,242	\$ 19,735	\$ 5,950	\$ 5,044	\$ -	\$ -	\$ -	\$ 1,012,587
Trinity	\$ -	\$ 22,031	\$ -	\$ -	\$ -	\$ -	\$ -	\$ -	\$ -	\$ 22,031
Tulare	\$ 2,941,424	\$ 511,093	\$ 72,310	\$ -	\$ -	\$ -	\$ -	\$ -	\$ 686	\$ 3,525,513
Tuolumne	\$ -	\$ 117,733	\$ -	\$ -	\$ -	\$ -	\$ -	\$ -	\$ -	\$ 117,733
Ventura	\$ 227,436	\$ 78,746	\$ 11,149	\$ 2,439	\$ 1,885	\$ 219	\$ -	\$ -	\$ -	\$ 321,874
Yolo	\$ 1,124,984	\$ 170,827	\$ -	\$ -	\$ -	\$ -	\$ 633	\$ 4	\$ -	\$ 1,296,449
Cities										
Camarillo	\$ 375	\$ 1	\$ -	\$ -	\$ -	\$ -	\$ -	\$ -	\$ -	\$ 376
Hayward	\$ -	\$ 384	\$ -	\$ -	\$ -	\$ -	\$ -	\$ -	\$ -	\$ 384
Menlo Park	\$ -	\$ 940	\$ -	\$ -	\$ -	\$ -	\$ -	\$ -	\$ -	\$ 940
Newark	\$ -	\$ 2,805	\$ -	\$ -	\$ -	\$ -	\$ -	\$ -	\$ -	\$ 2,805
Palo Alto	\$ 745	\$ 304	\$ -	\$ -	\$ -	\$ -	\$ -	\$ -	\$ -	\$ 1,049
Perris										\$ -
RedLands										\$ -
Totals										
Counties	\$ 25,000,403	\$ 10,236,706	\$ 967,614	\$ 54,941	\$ 2,848,584	\$ 65,261	\$ 3,547	\$ 218	\$ 59,406	\$ 39,236,680
Cities	\$ 1,120	\$ 4,434	\$ -	\$ -	\$ -	\$ -	\$ -	\$ -	\$ -	\$ 5,554
Grand Totals	\$ 25,001,523	\$ 10,241,140	\$ 967,614	\$ 54,941	\$ 2,848,584	\$ 65,261	\$ 3,547	\$ 218	\$ 59,406	\$ 39,242,234