

1-2007

## Notes From The Underground, vol.6#7, January, 2007

Follow this and additional works at: <http://digitalcommons.law.ggu.edu/lawlibrarynewsletters>



Part of the [Law Commons](#)

---

### Recommended Citation

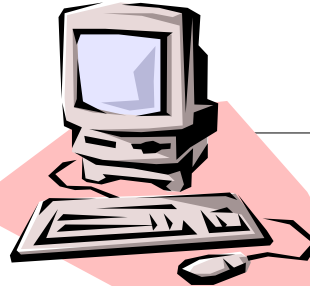
"Notes From The Underground, vol.6#7, January, 2007" (2007). *Newsletters*. Paper 42.  
<http://digitalcommons.law.ggu.edu/lawlibrarynewsletters/42>

This Newsletter or Magazine is brought to you for free and open access by the Law Library at GGU Law Digital Commons. It has been accepted for inclusion in Newsletters by an authorized administrator of GGU Law Digital Commons. For more information, please contact [jfischer@ggu.edu](mailto:jfischer@ggu.edu).

## NOTES FROM THE UNDERGROUND

Volume 6, Number 7

January 22, 2007



*Notes From the Underground* is the newsletter of the GGU Law Library, distributed electronically to your email box.

## “WHY DO YOU NEED SPACE FOR ALL THOSE BOOKS WHEN EVERYTHING IS ONLINE?”

Ah, the eternal library question asked by many. From our ever-expanding file of answers: **“Because everything ISN'T online.”**

Most of the legal treatises that we see lining our shelves are proprietary material. These books are **not** available “for free” on the Internet, and in many cases, not available online at all. When the publisher does make it available, the library pays a hefty fee for the privilege. And even then, access is “iffy,” **“Because we don't own what is online.”**

When a library purchases print material, it owns that copy and it remains in the research collection for as long as the library wishes. When a library purchase access to a database, that's exactly what it gets: ACCESS. Not ownership. If the publisher changes business priorities or goes out of business, access disappears and all the money paid for that access has been wasted. If a library disposes of its periodical collection, for example, because all the articles are available on a database, and then that database goes out of business, the library has neither a collection nor access. We love databases, especially when they are easy to search, but databases enhance, they do not substitute for, a viable research collection.

More from our answer file in the next exciting issue!

## BROWN BAG IT!

To assist both new and returning students in navigating the Law Library's web site, catalog and databases (which are full of really neat stuff), we are offering the following workshops during the semester. Our goal is to help you utilize all the tools we make available to you for legal research.

All workshops will be held at noon and will last approximately 45 minutes. We will be in classroom 3216 which will allow you to follow along on your laptop, eat lunch during the presentation, or both. Signup sheets will be posted on the glass wall across from Maryanne Gerber's office on the Plaza Level. Please sign up so we can be sure to have adequate space for all who wish to attend. You may sign up for any or all workshops as your schedule permits. **PROFESSORS ALSO WELCOME!**

**January 30:** Law Library Website and Catalog

**February 6:** *BNA & RIA Checkpoint* databases

**February 27:** CCH Tax and Business databases

**March 13 & 27:** Law on TV: Research issues from “Law & Order” using *Hein Online* and *LegalTrac*

**April 10:** *LLMC Digital* database

**April 17:** *United Nations Treaty Collection* database

## LAW LIBRARY REGULAR HOURS

Monday-Thursday  
7:30 a.m. to 10:30 p.m.

Friday  
7:30 a.m. to 9:00 p.m.

Saturday  
10:00 a.m. to 7:00 p.m.

Sunday  
10:00 a.m. to 10:30 p.m.

## STUDY ANNEX HOURS

**62 First Street, 5th Floor**

Monday-Friday  
8:30 a.m. to 6:00 p.m.

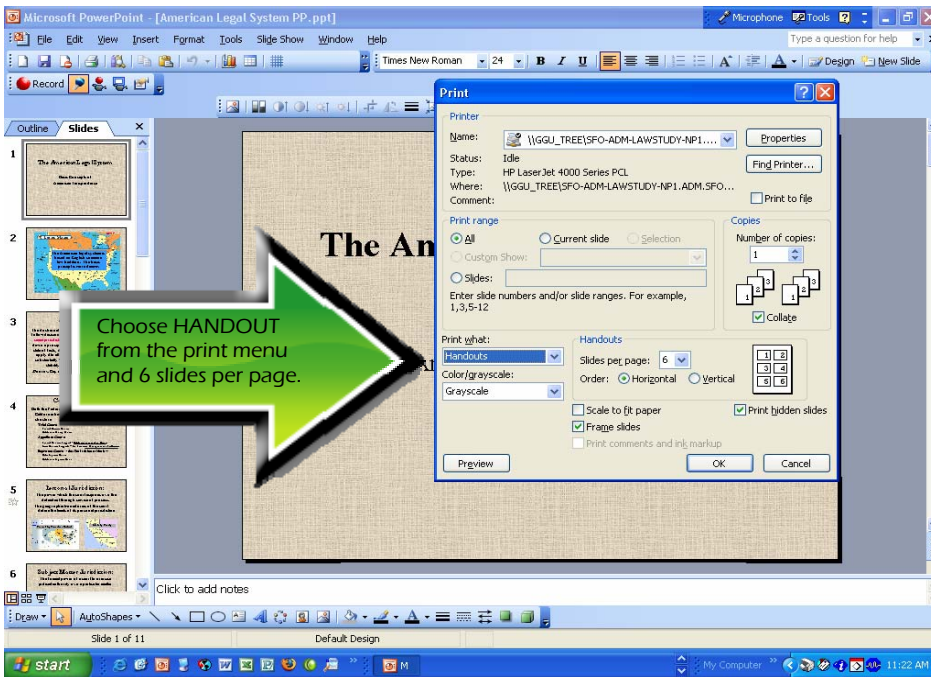
Comments or questions about our newsletter?  
Email Janet Fischer at [jfischer@ggu.edu](mailto:jfischer@ggu.edu)

# Stop the Insanity – *the green way to print PowerPoint slides*

Many of you are diligently printing the PP slides that your professors post on TWEN or other course sites. Most of these printouts consist of multiple pages of bulleted talking points on dark backgrounds that make for easy viewing in class. Printing these, however, uses an incredible amount of toner and paper.

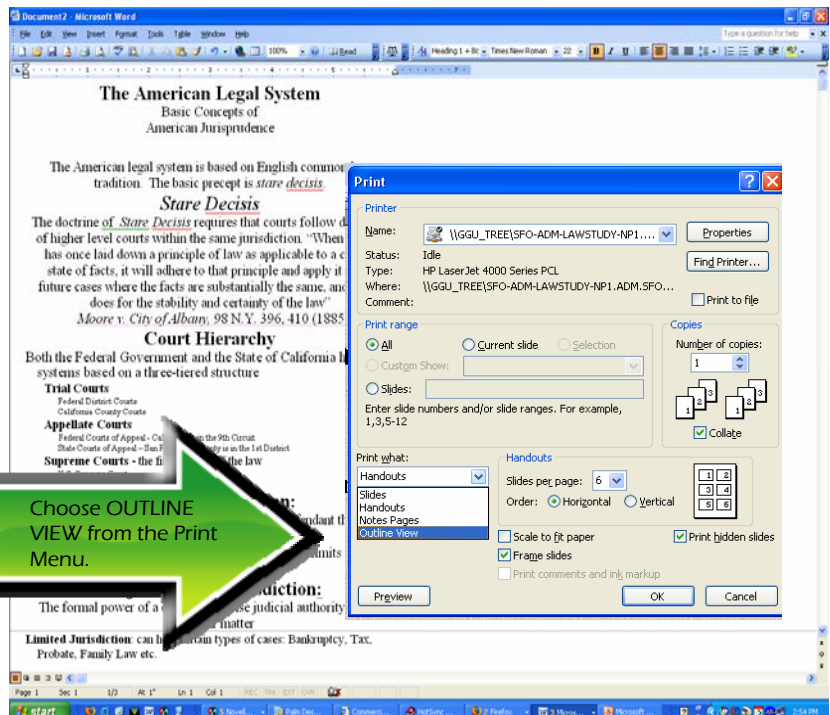
Try one of the following solutions:

1. Change the background of the show to white and the text to black, and print multiple slides per page. . .



Choose HANDOUT from the print menu and 6 slides per page.

2. Print the Outline Version. This 10 slide Power Point show became a 3 page outline !!!



Choose OUTLINE VIEW from the Print Menu.

## LAW LIBRARY



[www.ggu.edu/lawlibrary](http://www.ggu.edu/lawlibrary)

## Computer Assisted Research Training for Second semester 1L's

Training sessions are in progress during January and the beginning of February to familiarize students with searching Lexis and Westlaw. Sessions will be held both in an auditorium (Room 2201) as well as in a computer lab (B-4, located on the basement level of the law library). Students who own laptops with network access may choose to attend sessions in the auditorium. Those without laptop access or who would prefer training in a lab setting, may choose to attend the sessions in B-4.

Sign-up sheets for the trainings are posted on the glass wall in the Law Library – Plaza Level. Please sign up early to get the time most convenient for you. The schedule of classes is printed below for your convenience. Please note that room numbers are subject to change.

**All students must attend THREE CLASSES (one introduction, on Lexis class, and one Westlaw class).**

General orientation lecture/demo to online research (No sign up necessary)

- *Wed., Jan. 17, 12-1 (Room 2201)*
- *Thurs., Jan. 18, 12-1 (Room 2201)*
- *Thurs., Jan. 18, 6:30-7:00 (Room 3214)*
- *Fri., Jan. 19, 12-1 (Room 2201)*

**Lexis classes (in Room 2201 unless otherwise marked)**

- *Sat., Jan. 20, 10 – 11:30 (Room 3201)*
- **Mon., Jan. 22, 12-1**
- **Thurs., Jan. 25, 12-1**
- **Thurs., Jan. 25, 5:15- 6:15**
- **Tues., Jan. 30, 12-1**

## Law Library Staff

### Administration:

**Michael Daw**  
Co-Director, Head of Reference  
415-442-6682, mdaw@ggu.edu

**Mohamed Nasralla**  
Co-Director, Head of Circulation  
415-442-6684, mnasralla@ggu.edu

**Caroline Cheng**  
Administrative Coordinator  
415-442-6688, ccheng@ggu.edu

### Public Services Staff:

**Melissa Beuoy**  
Evening Services Librarian  
415-442-6689, mbeuoy@ggu.edu

**Marisa Diehl**  
Electronic Services Librarian  
415-442-6683, mdiehl@ggu.edu

**Janet Fischer**  
Collection Development Librarian,  
Government Documents Librarian  
415-442-7826, jfischer@ggu.edu

**Maryanne Gerber**  
Head of Electronic Services  
415-442-6520, mgerber@ggu.edu

### Technical Services Staff:

**Hadi Amjadi**  
Systems Librarian  
415-442-6686, hamjadi@ggu.edu

**Ryun Lee**  
Head of Technical Services  
415-442-6681, chlee@ggu.edu

**Richard Bahto**  
Technical Services Assistant  
415-442-3715 rbahto@ggu.edu

**Sandy Farmer**  
Cataloging Assistant  
415-442-7000 x3688  
sfarmer@ggu.edu

**Gary Kemp**  
Continuations/Government Documents Assistant  
415-442-3687, gkemp@ggu.edu

**Sophia Korver**  
Serials Assistant  
415-442-7000 x3696  
skorver@ggu.edu

**Michelle Lam**  
Acquisitions Assistant  
415-442-6687, mlam@ggu.edu

- **Wed., Jan. 31, 12-1**

### **Lexis classes (in the B-4 computer lab)**

- *Sat., Jan. 20, 10-11:30*
- **Mon., Jan. 22, 5:15-6:15**
- **Tues., Jan. 23, 5:15-6:15**

### **Westlaw classes (in Room 2201 unless otherwise marked)**

- *Sat., Jan. 20, 12 –1:30(Room 3201)*
- **Tues., Jan. 23, 12-1**
- **Wed., Jan. 24, 12-1**
- **Wed., Jan. 24, 5:15-6:15**
- **Mon., Jan. 29, 12-1**
- **Thurs., Feb. 1, 12-1**

### **Westlaw classes (in the B-4 computer lab)**

- *Sat., Jan. 20, 12 - 1:30*
- **Mon., Jan. 29, 5:15-6:15**
- **Tues., Jan. 30, 5:15-6:15**